

mTOR inhibition improves mitochondria function/biogenesis and delays cardiovascular aging in kidney transplant recipients with chronic graft dysfunction

Barbara Infante¹, Francesco Bellanti², Michele Correale³, Paola Pontrelli⁴, Rossana Franzin⁴, Serena Leo¹, Martina Calvaruso¹, Silvia Mercuri¹, Giuseppe Stefano Netti¹, Elena Ranieri⁵, Natale Daniele Brunetti³, Giuseppe Grandaliano^{6,7}, Loreto Gesualdo⁴, Gaetano Serviddio², Giuseppe Castellano¹, Giovanni Stallone¹

¹Department of Medical and Surgical Sciences, Nephrology, Dialysis and Transplantation Unit, University of Foggia, Foggia, Italy

²C.U.R.E. (University Center for Liver Disease Research and Treatment), Department of Medical and Surgical Sciences, University of Foggia, Italy

³Cardiology Unit, Department of Medical and Surgical Sciences, University of Foggia, Foggia, Italy

⁴Nephrology, Dialysis and Transplantation Unit, Department of Emergency and Organ Transplantation, University of Bari "Aldo Moro", Bari, Italy

⁵Clinical Pathology Unit and Center for Molecular Medicine, Department of Medical and Surgical Sciences, University of Foggia, Foggia, Italy

⁶Fondazione Policlinico Universitario A. Gemelli IRCCS, Rome, Italy

⁷Università Cattolica del Sacro Cuore, Rome, Italy

Correspondence to: Giuseppe Castellano; email: giuseppe.castellano@unifg.it

Keywords: cardiovascular aging, mTOR inhibitor, kidney transplantation, mitochondria, kidney disease

Received: November 25, 2020

Accepted: March 3, 2021

Published: March 23, 2021

Copyright: © 2021 Infante et al. This is an open access article distributed under the terms of the [Creative Commons Attribution License](https://creativecommons.org/licenses/by/3.0/) (CC BY 3.0), which permits unrestricted use, distribution, and reproduction in any medium, provided the original author and source are credited.

ABSTRACT

CVD remains the major cause of mortality with graft functioning in Kidney transplant recipients (KTRs), with an estimated risk of CV events about 50-fold higher than in the general population. Many strategies have been considered to reduce the CV risk such as the use of mTOR inhibitors. We evaluate whether chronic mTOR inhibition might influence CV aging in KTRs studying the molecular mechanisms involved in this effect. We retrospectively analyzed 210 KTRs with stable graft function on therapy with CNI and mycophenolic acid (Group A, 105 pts.), or with CNI and mTORi (Everolimus, Group B, 105 pts.). The presence of mTOR inhibitor in immunosuppressive therapy was associated to increase serum levels of Klotho with concomitant reduction in FGF-23, with a significant decrease in left ventricular mass. In addition, KTRs with mTORi improved mitochondrial function/biogenesis in PBMC with more efficient oxidative phosphorylation, antioxidant capacity and glutathione peroxidase activity. Finally, group B KTRs presented reduced levels of inflammaging markers such as reduced serum pentraxin-3 and p21ink expression in PBMC. In conclusion, we demonstrated that mTOR inhibition in immunosuppressive protocols prevents the occurrence and signs of CV aging in KTRs.

INTRODUCTION

Patients with chronic kidney disease (CKD) face a dramatically increased risk of mortality from

cardiovascular disease (CVD) [1, 2]. Structural and functional alterations of the cardiovascular (CV) system characterize CKD including endothelial dysfunction, arterial stiffening and changes in

left ventricular geometry, closely resembling the modifications of vessels wall and heart of aging subjects [3]. Indeed, CKD can be considered as a model of accelerated CV aging [2, 4–6], since heart and vessels are more susceptible to several stress conditions [7]; with development several hemodynamic changes, hypertension and atherosclerosis. Interestingly, this process appears to be independent by traditional cardiovascular risk factors, but linked to accelerated aging phenomena [8].

Mitochondria may represent a further link in this contest, since mitochondrial dysfunction has been reported in different models of CKD [9]. These subcellular organelles play a key role in the aging process modulating cellular oxidative stress, although there is now evidence of alternative pathways of aging-associated mitochondrial dysfunction leading to functional decline of cells independent of reactive oxygen species [9]. Klotho, a fibroblast growth factor-23 (FGF-23) co-receptor, has a well-recognized function in the aging process and may represent a link between aging and kidney disease [10]; Klotho plays a key role in the regulation of aging, particularly at the cardiovascular level, by inhibiting local phosphate uptake into vascular smooth muscle cells (VSMCs), and their differentiation in osteoblast-like cells and preservation of endothelial function [11, 12].

Mammalian target of rapamycin (mTOR) is a key cellular kinase, whose inhibition has been associated with an increased lifespan in worms, flies and mice [13, 14]. In addition, mTOR modulates several metabolic pathways contributing to cellular senescence, including autophagy, mitochondrial respiratory function and biogenesis, and Klotho expression/function [15, 16]. Moreover, mTOR is up-regulated by nutrients, including phosphate, that induces vascular calcification, driving osteogenic trans-differentiation of VSMCs [17]; interestingly, mTOR activation in VSMCs can reduce expression of klotho [17, 18].

Specifically, in the setting of kidney transplant recipients (KTRs), CVD remains the major cause of mortality with functioning graft [19], with an estimated risk of CV events about 50-fold higher than in the general population [20]. Immunosuppressive therapy can adversely affect kidney function; moreover, immunosuppressive drugs might lead to relevant side effects linked to CVD with the development of unfavorable CV scenario in KTRs [21, 22]. Many strategies have been considered to reduce the CV risk of KTRs, such as steroids or calcineurin inhibitors (CNI) minimization, but current data are inconclusive [23]. The cornerstone of CNI

minimization is the introduction of mTOR inhibitors (mTORi) in the immunosuppressive protocol [24–26].

In this study we investigated whether chronic mTOR inhibition might influence CV aging in KTRs; moreover, we evaluated the molecular mechanisms involved in this effect, focusing on the role of klotho/FGF23 axis and mitochondrial function /biogenesis.

MATERIALS AND METHODS

Patients

We conducted a multicenter, observational, case-control study enrolling KTRs in Transplantation centers of Foggia and Bari (Italy). The study protocol was approved by the Ethical Committee of the coordinating center (Study n° 4440; Prot. N.670/CE-2014) according to the Declaration of Helsinki. Once written informed consent was collected, we included in the study 210 renal transplant recipients with stable graft function and affected by CKD stage 3–5, on therapy with CNI and mycophenolic acid (Group A, 105 pts.), or with CNI and mTORi (Everolimus) (Group B, 105 pts.) from at least one year. The patients were recruited after qualifying to the following criteria: inclusion criteria: age > 18 years; recipient of a primary renal allograft from a cadaveric donor, stable graft function, calcineurin-inhibitors-based therapy; estimated GFR < 60 ml/min, time from transplantation > 12 and < 60 months; leukocytes > 4x10⁹/L, platelets > 100x10⁹/L, fasting triglycerides < 350mg/dL, fasting cholesterol < 300mg/dL. Exclusion criteria: panel reactive antibodies > 50%; an acute rejection episode in the previous 12 months; active systemic infection [27]; presence of neoplasia and previous history of cancer [28].

No changes in immunosuppressive therapy were done from at least one-year former enrollment for all patients recruited. The enrollment period was 12 months and follow-up time was two years monitoring the principal CV events. The immunosuppressive efficacy was monitored through the measurement of the drugs trough level (T.L.). The two groups were matched for the main demographic features, graft function and transplantation vintage.

Methods

Cardiac evaluation

All patients were evaluated by conventional 2D and TDI echocardiography under resting conditions as previously described [29].

Transthoracic echocardiography was performed with the use of iE33 (Philips Medical Systems, Andover, MA, USA) as previously described [30, 31].

TDI was performed using apical views for the long-axis motion of the ventricles. Two-dimensional echocardiography with TDI-color imaging was performed using aS5-1 Sector Array Transducer with Pure Wave Crystal Technology (5 to 1 MHz). Two-dimensional echocardiography with TDI color imaging views were optimized for pulse repetition frequency, color saturation, sector size, and depth and were allowed the highest possible frame rate. At least 3 consecutive beats were stored, and the images were analyzed offline with the aid of a customized software package (QLAB quantification software, Philips).

PBMC isolation and RNA extraction

Twenty milliliters of whole blood were collected from patients (8 CNI-MPA and 10 CNI-EVE) at the time of enrollment (T0). For 5 out of 8 CNI-MPA patients, whole blood was harvested at T0 and after 6 (T1) and 12 months (T2) from conversion to Everolimus treatment. PBMCs were isolated by density separation over a Ficoll–Hypaque gradient (Flow-Laboratories, Irvine, UK). Total RNA was extracted by the RNeasy mini kit (Qiagen, Valencia, CA).

Real-time quantitative qPCR

Reverse transcription of total RNA (500 ng) was performed as previously described [32]. qPCR was conducted in triplicate using SsoAdvanced™ Universal SYBR® Green Supermix (Bio-Rad Laboratories, Hercules, CA, USA) and two separate sets of oligonucleotide primers specific for Homo sapiens cyclin-dependent kinase inhibitor 1A (CDKN1A), transcript variant 1, mRNA (p21), (upstream 5'- TGGAGACTCTCAGGGTCGAAA-3', downstream:5' GGCGTTTGGAGTGGTAGAAATC-3' Invitrogen, Milan, Italy) and glyceraldehyde-3 phosphate dehydrogenase (GAPDH) (upstream 5'-GAA GGT GAA GGT CGG AGT CA-3'; downstream: 5'-CAT GGG TGG AAT CAT ATT GGA A-3'; Invitrogen, Milan, Italy) [33] (Light Cycler@96 instrument (Roche, Mannheim, Germany) was programmed with an initial step of 30 seconds at 95° C, followed by 40 thermal cycles of 15 seconds at 95° C and 60 seconds at 60° C for GAPDH and p21. Melting curve analysis was employed to exclude nonspecific amplification products. The comparative C_t method ($\Delta\Delta C_t$) was used to quantify gene expression and the relative quantification (RQ) was calculated as $2^{-\Delta\Delta C_t}$.

Klotho/FGF23 and PTX-3 serum level assessment

Circulating Klotho/FGF23 and PTX3 were measured by ELISA, according to the manufacturer's instructions (R&D Systems, Minneapolis, MN).

Mitochondrial function/biogenesis

Laboratory measurements

Blood samples were obtained and treated as previously described [34].

Serum fluorescent adducts formed between peroxidation-derived aldehydes (HNE and MDA) and proteins were measured by spectrofluorimetry as previously reported [35]. The antioxidant activity was measured as Trolox equivalent antioxidant capacity (TEAC) in blood, according to a previously published method [36]. Glutathione peroxidase (GPx) activity was analyzed in PBMCs by spectrophotometry following the Cayman Assay kit procedure (n° 703102).

Measurement of respiratory activity

We resuspended freshly isolated PBMCs at 1×10^6 cells/500 μ l in 10 mM KH₂PO₄, 27 mM KCl, 1 mM MgCl₂, 40 mM HEPES, 0.5 mM EGTA (pH 7.1) and evaluated O₂ consumption by high resolution respirometry (Clark electrode, Hansatech Instruments Ltd, Norfolk, UK) at 37° C under continuous stirring. Next, we added oligomycin (8 μ g/ml), followed by 5 min by the addition of valinomycin (2 μ g/ml). Oxygen consumption rate (OCR) was corrected for 3 mM KCN-insensitive respiration and normalized to the cell number. finally, we calculated respiratory control ratio (RCR) by dividing the rates of oxygen consumption obtained before and after the addition of oligomycin.

Flow cytometric analysis

We investigated mitochondrial injury and alteration in membrane potential ($\Delta\psi$) by staining with 5,5',6,6'-tetrachloro-1,1',3,3'-tetrathylbenzimidazolyl carbocyanine iodide (JC-10; Abcam Inc, Cambridge, UK),.

We detected reactive species by using 2',7'-dichlorofluorescein diacetate (DCFH-DA, Sigma-Aldrich, St Louis, Missouri, USA). We washed the cells with PBS and incubated with 10 μ M DCFH-DA for 30 min at 37° C. Analysis was carried out by a Flow Sight Imaging flow cytometer (Luminex Corporation, MV 's-Hertogenbosch, the Netherlands).

Statistical analysis

Data were expressed as mean \pm standard deviation of the mean (SDM). Gaussian distribution of the samples was

evaluated by Kolmogorov–Smirnov test. The significance of differences between the two groups was assessed by the student's t-test for unpaired samples (SPSS, Inc., Chicago, IL; GraphPad Software, Inc., San Diego, CA).

We expressed continuous variables as mean \pm standard deviation, and categorical variables as percentages. We compared mean values with Student's t-test for variables with normal distribution or with the Mann–Whitney non-parametric U test for variables with a non-normal distribution. Percentages were compared with χ^2 test. A $p < 0.05$ was considered statistically significant.

RESULTS

Demographic and biochemistry data

We did not observe statistical differences between the two groups of patients at the end of follow-up regarding age, transplant age, graft function, acute rejection episodes, appearance of de Novo Donor Specific antibodies, blood levels of immunosuppressive drugs, as well as for leukocytes, platelets, triglycerides, cholesterol, parathormone (PTH) and 1,25 dihydroxycholecalciferol (Table 1).

Interestingly, we observed a significant statistical difference between the two groups of patients for the values of FGF-23, Klotho, phosphate urine excretion (FGF-23 pg/ml; $2068,2 \pm 846,5$; $320,7 \pm 191$; $P=0.00001$; Klotho pg/ml $425,8 \pm 102$; 802 ± 109 ; $p=0.01$; phosphate urine excretion uPg/24 $751,091 \pm 342,659$; $878,142 \pm 270,913$; $p=0.03$, A vs B) (Figure 1A–1C, respectively). The presence of mTOR inhibitor in immunosuppressive therapy was associated with an increase Klotho levels with a concomitant reduction in FGF-23 levels; we did not find differences in PTH and 1,25 dihydroxycholecalciferol, demonstrating that klotho-FGF-23 axis in the kidney supports the phosphate homeostasis inducing phosphate urine excretion.

Cardiac evaluation

When we analyzed cardiac parameters, we did not observe any difference in the two groups regarding pulse wave velocity (PWV), Flow Mediated Dilation (FMD), ejection fraction (EF), LV-filling velocity and E-deceleration time (EDT), the ratio of trans-mitral early to late (E/A ratio), peak velocities of trans-mitral early (E) and late diastolic (A) LV filling. Moreover, none of patients had experiences of serious CV events before and during the follow-up period.

In contrast, we observed a significant statistical difference between the two groups of patients in left

ventricular mass (LVM) (gr; $232,7 \pm 45$; $187,8 \pm 31$; $p=0.02$, A vs B) (Figure 1D). The cardiac evaluation showed that only the value of LVM was reduced in patients of group B compared with Group A. This result underlines the protective effect of mTOR inhibitors on heart function, because LVM is the strongest predictor of the risk of subsequent congestive heart failure, a CV complication that can negatively affects the outcome of KTRs.

Mitochondrial function/biogenesis

Next, we analyzed the oxygen uptake of isolated PBMCs by high resolution respirometry. We found a significant increased oxygen consumption rate (OCR) in resting conditions (RR) in the CNI+mTORi group compared with CNI-MPA (Figure 2A). The addition of the F_0F_1 -ATP synthase inhibitor oligomycin (OL) led to a significant OCR depression in both groups, suggesting that a significant part of mitochondrial respiration was coupled to ATP synthesis (Figure 2B). The collapse of the mitochondrial transmembrane potential ($\Delta\Psi_m$) by the addition of the K^+ -ionophore valinomycin (VAL) restored the OCR to the levels of resting respiration in both groups (Figure 2C). We found that these activities were strongly inhibited by KCN and therefore linked to the mitochondrial respiratory chain.

The difference between the RR and after OL addition represents the ATP-related oxygen consumption. As shown in Figure 3A, this rate was increased in PBMCs from patients treated with CNI+mTORi compared with the CNI-MPA group. Similarly, the respiratory control ratio (RCR), which is the ratio between the resting respiration and oxygen uptake after OL addition, was higher in the CNI+mTORi group rather than CNI, indicating more efficient oxidative phosphorylation (Figure 3B).

The cytofluorimetric analysis of mitochondrial membrane potential highlighted significant differences between the PBMC groups, reflecting a significant higher mitochondrial polarization in CNI+mTORi treated patients than CNI-MPA (Figure 4A). To determine the intracellular production of reactive species, DCFH-DA staining was performed on PBMCs from the same groups. Flow cytometry analysis showed a significantly higher level of fluorescent cells in patients treated with CNI+mTORi rather than CNI-MPA (Figure 4B).

To verify whether the increased production of reactive species in PBMCs from patients treated with CNI+mTORi was related to circulating oxidative stress, the level of protein oxidation was measured in terms of serum HNE- and MDA-protein adducts (Figure 5). We

Table 1. Demographic, clinical and biochemistry data.

	T0	Group A	Group B	T24	Group A	Group B	P value
Number		105	105		105	105	NS
HLA Mismatches (n°)		3 + 1	2.8 + 1.3		3 + 1	2.8 + 1.3	NS
GFR<60 ml/min		42 + 14	39 + 19		40 + 9	41 + 16	NS
Time from transplantation (mo)		26.57 + 5.04	29.17 + 5.9		50.57 + 5.08	53.17 + 5.88	NS
Age (yrs)		48.18 + 8.18	53.75 + 6.09		50.18 + 8.2	55.75 + 6.1	NS
Acute rejection episodes (n°)		0	0		0	0	NS
Fasting triglycerides (mg/dl)		198 + 39	221 + 68		198 + 39	221 + 88	NS
Fasting cholesterol (mg/dl)		175 + 48	196 + 39		188 + 32	202 + 27	NS
White blood cells (mmc)		8752 + 1263	6523 + 985		7120 + 1452	6900 + 1159	NS
Platelets (mmc)		291 + 111	269 + 124		275 + 97	212 + 74	NS
PTH (pg/ml)		289 + 99	304 + 87		312 + 114	348 + 107	NS
1,25 VIT D (ng/ml)		23.4 + 11.3	28.2 + 13.7		20.4 + 12.2	22.6 + 15.7	NS
De novo DSA %		0	0		0	0	NS
Immunosuppressive Therapy		TAC – MMF - CS	TAC - EVR - CS		TAC – MMF - CS	TAC - EVR - CS	NS
T.L. Tacrolimus (ng/ml)		6.8 + 2.1	4.8 + 1.6		6.1 + 0,9	4.2 + 1.9	NS
T.L. Everolimus (ng/ml)		0	3.8 + 1.1		0	3.1 + 0,7	NS

did not observe any difference in the level of aldehyde-protein adducts between the two groups, suggesting that, despite a higher production of reactive species by the PBMC from patients treated with CNI+mTORi, no circulating oxidative damage was observed.

Thus, the systemic antioxidant defense in terms of blood trolox equivalent antioxidant capacity (TEAC) and glutathione peroxidase (GPx) activity in PBMC

were studied. Interestingly, both TEAC and GPx activity were increased in the CNI+mTORi group with respect to CNI (Figure 6A, 6B).

Inflammaging and senescence markers

We finally evaluated the effect of mTOR inhibitors on two of the principal markers of Inflammaging and cellular Senescence, Pentraxin-3 and p21^{ink}. Interestingly, we

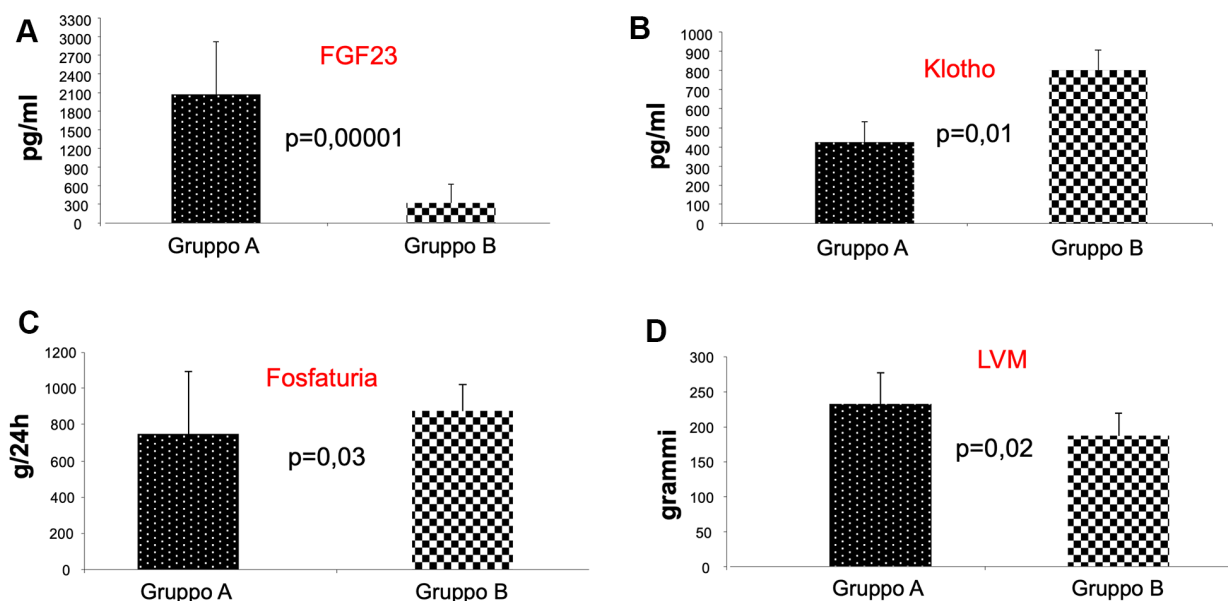


Figure 1. Analysis of FGF-23, Klotho, and phosphate urine excretion in the two groups of patients. As shown, we observed a significant statistical difference between the two groups of patients for the values of FGF-23, Klotho, phosphate urine excretion, indicating that patients receiving mTORi Group (B) presented reduced FGF-23 levels (A), increased Klotho levels (B) with enhanced phosphaturia (C). Interestingly, we also found a reduced left ventricular mass (LVM) in group B patients (D).

observed a statistically significant difference between the values of these markers in the two groups of patients (PTX3 pg/ml 115,73 \pm 48,14 vs 76,2 \pm 34,21; $p=0.02$; p21^{ink} pg/ml 1,03 \pm 0,12 vs 0.80 \pm 0,15; $p=0.002$ A vs B) (Figure 7A, 7B, respectively). These results suggested that the inhibition of the mTOR pathway could block leucocyte transformation into pro-inflammatory and senescence phenotype. Real-time PCR also confirmed the down-regulation of p21 in PBMCs from group B patients compared to group A (Figure 7B).

DISCUSSION

In this study, we demonstrated that mTOR inhibition prevents the occurrence and signs of CV aging in

kidney transplant recipients. Our results acquired a particular significance because they have been obtained in a high-risk patient population, such as kidney transplant patients affected by chronic graft dysfunction, a population similar to CKD patients.

Several lines of evidence demonstrated that impaired renal function led to increased CV risk in KTRs [37–41]. A post hoc analysis of the FAVORIT Trial showed an association of lower eGFR (less than 45 ml/min/1.73 m²) with CV adverse events [42]; in a post hoc analysis of the ALERT study, decreased renal function was associated with increased risk of cardiac death [43]. These findings are further supported by the PORT study in KTRs showing a correlation between lower eGFR and increased

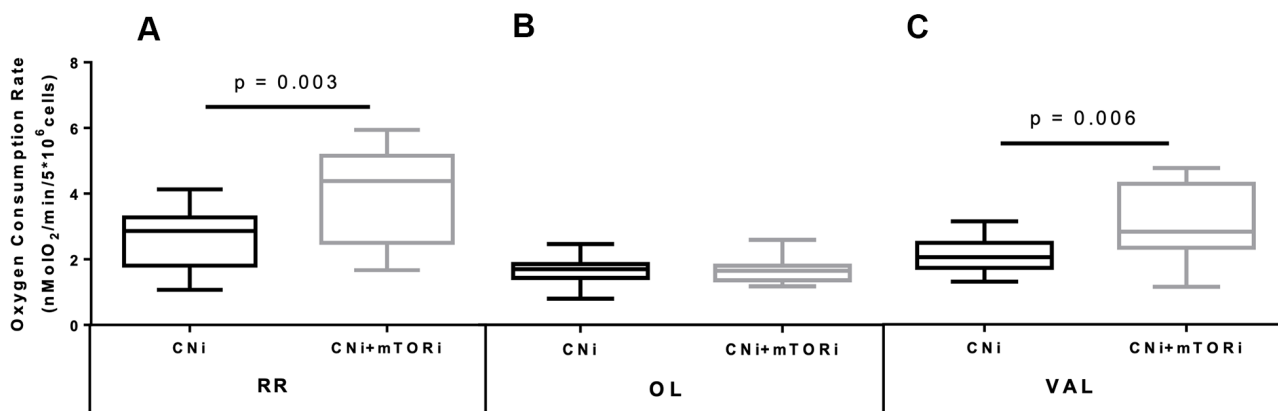


Figure 2. Boxplot representation of the normalized and KCN-insensitive-corrected oxygen consumption rates measured in peripheral blood mononuclear cells (PBMC) from patients treated with calcineurin inhibitor (CNI) or CNI + mTOR inhibitor (CNI+mTORi) under resting conditions (RR, **A**), in the presence of oligomycin (OL, **B**) and in the presence of valinomycin (VAL, **C**). Statistical difference was assessed by unpaired student's t-test.

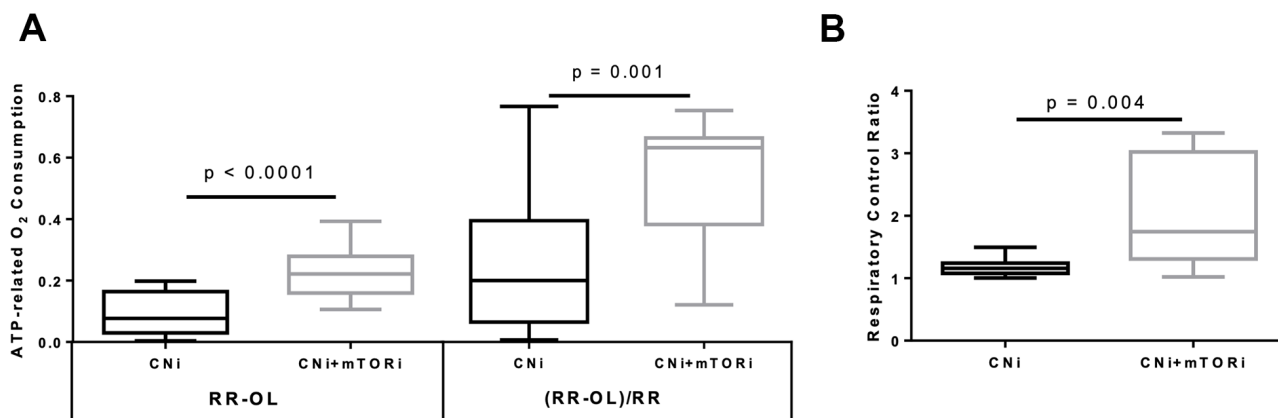


Figure 3. (A) Boxplot representation of the ATP-dependent O₂ consumption, measured in peripheral blood mononuclear cells (PBMC) from patients treated with calcineurin inhibitor (CNI) or CNI + mTOR inhibitor (CNI+mTORi) as absolute difference between that obtained in the absence and that in the presence of oligomycin (RR-OL) or normalized to basal respiration ((RR-OL)/RR). (B) Boxplot representation of the respiratory control ratio obtained by dividing the oxygen consumption rates measured in PBMCs from patients treated with CNI or CNI+mTORi under resting conditions by that in the presence of oligomycin (RR/OL). Statistical difference was assessed by unpaired student's t-test.

coronary heart disease [44]. In this context, immunosuppressive therapy holds a particular importance. It is well known that CNI therapy is closely associated with worsening of renal function. Chronic CNIs nephrotoxicity, which is largely nonspecific in appearance, progresses over time [45, 46]. Although evidence showed less nephrotoxic effect of tacrolimus compared to cyclosporine in this setting of patients [47], however, either CNIs seem to show similar toxicity profile in terms of progressive eGFR reduction [48]. These facts strengthen our study model since all our patients were affected by CKD and with CNIs based therapy with a unique difference being the presence/absence of mTORi. Then, our results demonstrate that the presence of mTORi in the

immunosuppressive protocol improves heart function, through the reduction of LVM, the strongest predictor of congestive heart failure that negatively affects the outcome of KTRs.

Another important issue of our results is the effect of mTORi on Klotho/FGF23 axis. Klotho is probably the main 'aging suppressor' gene; its defect leads to multiple aging-like phenotypes with premature death around 2 months of age [13, 49]. Klotho is a transmembrane protein mainly express in the kidney where it works as a co-receptor for FGF-23 [50] mediating several functions [51]. In KTRs, mTORi influences phosphate homeostasis and prolongs hypophosphatemia that usually occurs in the early post-transplant period

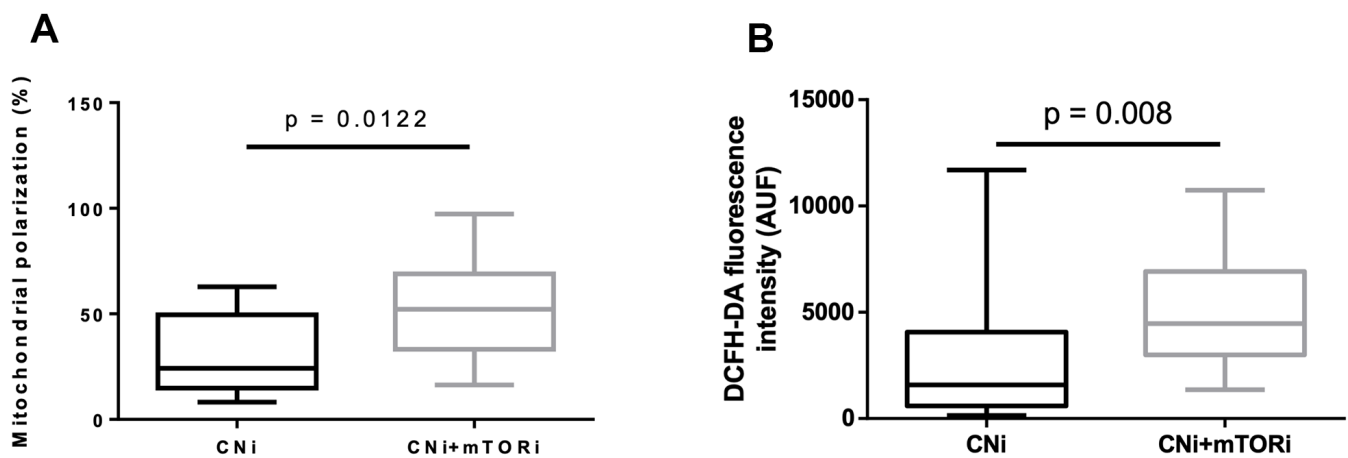


Figure 4. (A) Percentage of peripheral blood mononuclear cells (PBMC) with polarized mitochondria from patients treated with calcineurin inhibitor (CNI) or CNI + mTOR inhibitor (CNI+mTORi). Mitochondrial polarization was detected by flow cytometry analysis of cells stained with JC-10. (B) Cytofluorimetric detection of reactive species in PBMCs from patients treated with CNI or CNI+mTORi, after staining with 2',7'-dichlorofluorescein diacetate (DCFH-DA); AUF, arbitrary units of fluorescence. Statistical difference was assessed by unpaired student's t-test.

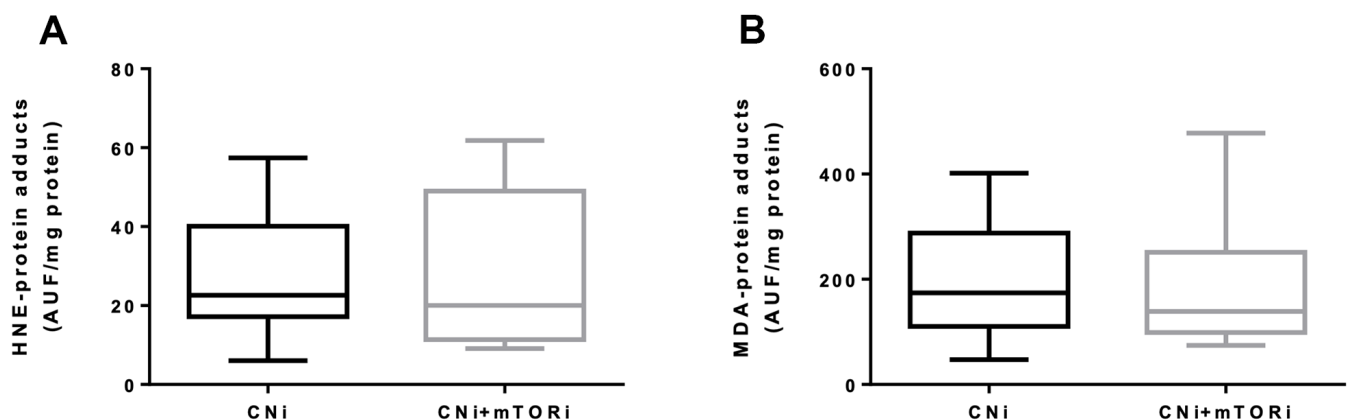


Figure 5. Serum levels of fluorescent hydroxynonenal- (HNE, A) and malondialdehyde- (MDA, B) protein adducts in patients treated with calcineurin inhibitor (CNI) or CNI + mTOR inhibitor (CNI+mTORi). AUF, arbitrary units of fluorescence.

[52]. It has been demonstrated the mTOR activation can up regulate phosphate transport across the apical membrane of proximal tubular epithelial cells by the Na⁺-coupled phosphate transporter; interestingly inhibition of mTOR can abrogates this effect [53]. The fact that we did not note a difference in phosphate serum levels between the two groups of patients may be due to an adaptive mechanism typically of CKD. Moreover, our data identify a direct effect of the mTORi on increased urine phosphate excretion, in spite of a reduction in FGF-23 serum level, as suggested by Tataranni et al. [54].

Several evidences suggest a direct and significant correlation between CVD and Klotho expression.

Klotho can inhibit local phosphate uptake into VSMCs, counteract matrix mineralization and suppress osteoblast-like differentiation of VSMCs; moreover, Klotho can efficiently preserve endothelial function [11, 12, 49]. interestingly, mTOR-inhibitors can be considered as up-regulators of klotho, potentially preventing or delaying the onset of age-related cardiovascular dysfunctions, as suggested by our results.

The most relevant issue of our work was the results obtained from the study of mitochondrial function/biogenesis. We showed a significantly increased oxygen consumption rate in patients treated with mTORi, as well as the respiratory control ratio

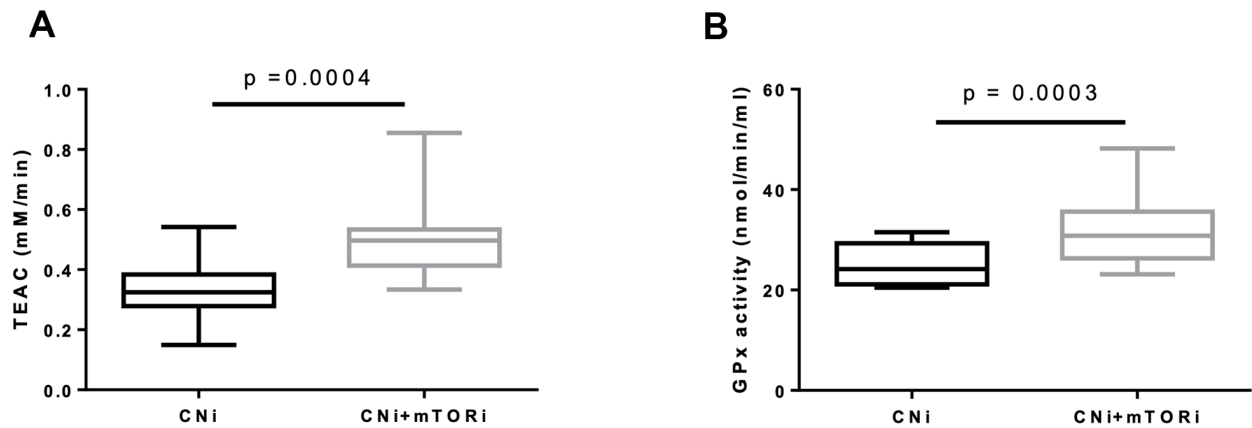


Figure 6. (A) Trolox equivalent antioxidant capacity (TEAC) levels in blood from patients treated with calcineurin inhibitor (CNI) or CNI + mTOR inhibitor (CNI+mTORi). (B) Glutathione peroxidase (GPx) activity in peripheral blood mononuclear cells (PBMC) from patients treated with CNI or CNI+mTORi. Statistical difference was assessed by unpaired student's t-test.

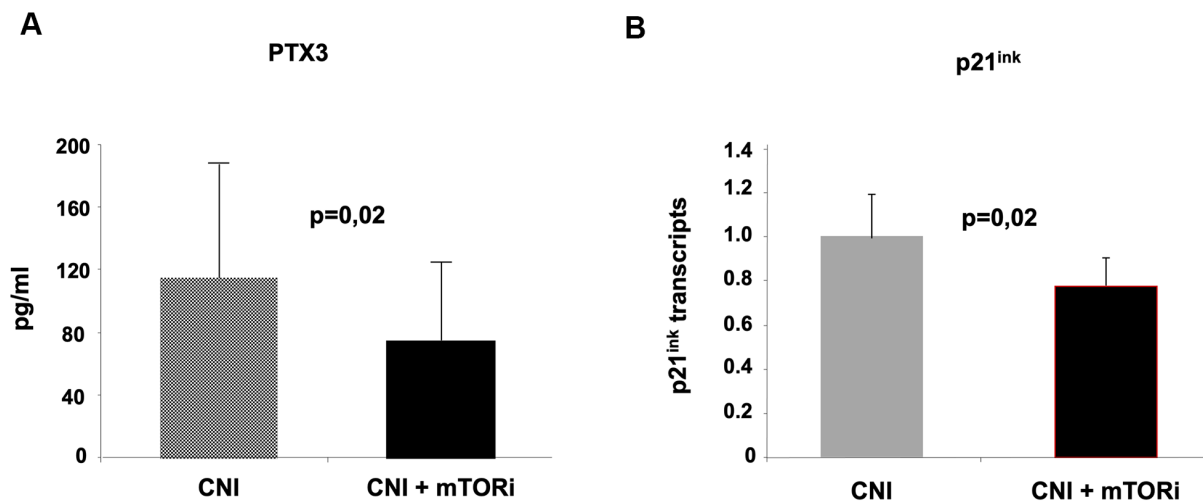


Figure 7. Evaluation of pentraxin-3 and p21^{ink} as markers of inflammaging in the two groups of kidney transplant recipients. The inhibition of mTOR pathways in group (B) was associated with reduced circulating levels of Pentraxin-3 (A) and down-regulation of p21 in PBMC (real-time PCR).

(RCR), indicating a more efficient oxidative phosphorylation in this group. Moreover, the increase in intracellular production of reactive species, observed in the mTORi treated group, was not correlated with circulating oxidative damage. Interestingly, the systemic antioxidant defense was increased in the mTORi group. Finally, our findings reflected a significantly higher mitochondrial polarization that is an important sign of cellular efficiency. This is an important viewpoint since cardiomyocytes must rely on a constant supply of high-energy phosphates from mitochondria to maintain physiological contractile function of the heart; as consequence, the dysregulation of their homeostasis may play a pivotal role in the onset and development of aging-related cardiovascular disorders [55]. Mitochondria are indeed the primary source of ROS, which triggers endogenous process of apoptosis;; interestingly, this is considered the leading cause of cell death in aging cardiomyocytes [56–59]. In addition, in presence of increased ROS production, the Nrf-2 activity might be inhibited with a subsequent increase in TNF- α level;; this will lead to upregulation in Nox complex expression and activity, generating a vicious cycle [58]. Interestingly, there are organs like the heart that are particularly sensitive to this phenomenon, with a limiting rate of replication and high levels of oxygen consumption; this explains the harmful cardiovascular consequences of aging [60]. In this contest, our results suggest that the mTOR inhibition could be considered an important regulator of oxidative stress by promoting mitochondrial biogenesis and function. Finally, we evaluated two pivotal markers of inflammaging [61] in two groups of patients to verify the anti-aging effect of mTORi on these biomarkers. Our findings showed that the presence of mTORi was associated with a reduction of the above markers, indicating that blocking the mTOR pathway reduces or delays age-related biomarkers. As is well known, PTX3 is a specific marker of localized vascular inflammation and damage, because it is synthesized by cells directly involved in atherosclerosis such as macrophages smooth muscle cells and endothelial cells and [62]. PTX3 as a pivotal role in innate immunity as a soluble pattern recognition receptor; moreover, PTX3 is localized in atherosclerotic lesions [63]. PTX3 can induce tissue factor expression in monocytes and endothelial cells [64] therefore contributing to thrombosis through this mechanism. In addition, PTX3 was associated with CVD, all cause death and CVD risk factors in a large cohort of patients [65]. Finally, our results supported the findings of Flynn et al. that demonstrated, in animal models, that rapamycin-based therapy can extend the lifespan of mammals with functional benefits to several tissues such as improvement in contractile function, antihypertrophic signaling in the aged heart and reduction of age-related inflammation [66]. In addition,

p21^{ink} is known as a cyclin-dependent kinase inhibitor with a pivotal role in renal aging at the level of tubular epithelial and leucocytes; our data demonstrated that mTORi could reduce the activity of this kinase with positive effects on cellular homeostasis and vitality.

Potential study limitations include its retrospective nature and the relatively small number of patients, other than the fact that no major CV events occurred during the two years of follow-up that prevent us doing a direct conclusion. Conversely, kidney graft recipients with CKD constituted our pts' population. These subjects share the same or even a greater, CV risk and that the use of steroids and CNI had influenced our observation; since we do not plan to withdraw these drugs, the effects observed were uniquely due to mTOR inhibition and this represent a key strength of our study. Moreover, the main problem with the use of mTORi is the high drop-out rate due to side effects. However, with dose-proposed, none patients were drop-out.

In summary, our findings represent, the first attempt, to our knowledge, to investigate the ability of chronic pharmacological mTOR inhibition to delay vascular changes in a human model of accelerated vascular aging like KTRs. In addition, our results may shed light on the mechanisms involved in the pathogenesis of CKD-induced CVD and clarify, in a clinical setting, the links between mTOR activation and other relevant regulatory systems in aging biology as klotho/FGF23 axis and mitochondrial function/biogenesis.

CONFLICTS OF INTEREST

The authors declare that they have no conflicts of interest.

FUNDING

This paper was founded by a project entitled “mTOR inhibition and cardiovascular aging in kidney transplant recipients with chronic graft dysfunction” (BANDO PROGETTO DI RICERCA 2016 – Italian Society of Nephrology; December 2016). This paper was also supported by an Institutional grant from the Department of Medical and Surgical Sciences, University of Foggia, Italy (Bando pubblicazioni scientifiche, 2021).

REFERENCES

1. Said S, Hernandez GT. The link between chronic kidney disease and cardiovascular disease. *J Nephropathol.* 2014; 3:99–104. <https://doi.org/10.12860/jnp.2014.19> PMID:[25093157](https://pubmed.ncbi.nlm.nih.gov/25093157/)

2. Losappio V, Franzin R, Infante B, Godeas G, Gesualdo L, Fersini A, Castellano G, Stallone G. Molecular mechanisms of premature aging in hemodialysis: the complex interplay between innate and adaptive immune dysfunction. *Int J Mol Sci.* 2020; 21:3422. <https://doi.org/10.3390/ijms21103422> PMID:[32408613](https://pubmed.ncbi.nlm.nih.gov/32408613/)
3. Ortiz A, Covic A, Fliser D, Fouque D, Goldsmith D, Kanbay M, Mallamaci F, Massy ZA, Rossignol P, Vanholder R, Wiecek A, Zoccali C, London GM, and Board of the EURECA-m Working Group of ERA-EDTA. Epidemiology, contributors to, and clinical trials of mortality risk in chronic kidney failure. *Lancet.* 2014; 383:1831–43. [https://doi.org/10.1016/S0140-6736\(14\)60384-6](https://doi.org/10.1016/S0140-6736(14)60384-6) PMID:[24856028](https://pubmed.ncbi.nlm.nih.gov/24856028/)
4. Nitta K, Okada K, Yanai M, Takahashi S. Aging and chronic kidney disease. *Kidney Blood Press Res.* 2013; 38:109–20. <https://doi.org/10.1159/000355760> PMID:[24642796](https://pubmed.ncbi.nlm.nih.gov/24642796/)
5. Stenvinkel P, Larsson TE. Chronic kidney disease: A clinical model of premature aging. *Am J Kidney Dis.* 2013; 62:339–51. <https://doi.org/10.1053/j.ajkd.2012.11.051> PMID:[23357108](https://pubmed.ncbi.nlm.nih.gov/23357108/)
6. Franzin R, Stasi A, Fiorentino M, Stallone G, Cantaluppi V, Gesualdo L, Castellano G. Inflammaging and complement system: A link between acute kidney injury and chronic graft damage. *Front Immunol.* 2020; 11:734. <https://doi.org/10.3389/fimmu.2020.00734> PMID:[32457738](https://pubmed.ncbi.nlm.nih.gov/32457738/)
7. Paneni F, Diaz Cañestro C, Libby P, Lüscher TF, Camici GG. The aging cardiovascular system: understanding it at the cellular and clinical levels. *J Am Coll Cardiol.* 2017; 69:1952–67. <https://doi.org/10.1016/j.jacc.2017.01.064> PMID:[28408026](https://pubmed.ncbi.nlm.nih.gov/28408026/)
8. Lakatta EG, Levy D. Arterial and cardiac aging: major shareholders in cardiovascular disease enterprises: part I: aging arteries: a “set up” for vascular disease. *Circulation.* 2003; 107:139–46. <https://doi.org/10.1161/01.cir.0000048892.83521.58> PMID:[12515756](https://pubmed.ncbi.nlm.nih.gov/12515756/)
9. Che R, Yuan Y, Huang S, Zhang A. Mitochondrial dysfunction in the pathophysiology of renal diseases. *Am J Physiol Renal Physiol.* 2014; 306:F367–78. <https://doi.org/10.1152/ajprenal.00571.2013> PMID:[24305473](https://pubmed.ncbi.nlm.nih.gov/24305473/)
10. Seiler S, Rogacev KS, Roth HJ, Shafein P, Emrich I, Neuhaus S, Floege J, Fliser D, Heine GH. Associations of FGF-23 and sKlotho with cardiovascular outcomes among patients with CKD stages 2-4. *Clin J Am Soc Nephrol.* 2014; 9:1049–58. <https://doi.org/10.2215/CJN.07870713> PMID:[24677555](https://pubmed.ncbi.nlm.nih.gov/24677555/)
11. Hamano T. Klotho upregulation by rapamycin protects against vascular disease in CKD. *Kidney Int.* 2015; 88:660–62. <https://doi.org/10.1038/ki.2015.223> PMID:[26422620](https://pubmed.ncbi.nlm.nih.gov/26422620/)
12. Vervloet MG, Adema AY, Larsson TE, Massy ZA. The role of klotho on vascular calcification and endothelial function in chronic kidney disease. *Semin Nephrol.* 2014; 34:578–85. <https://doi.org/10.1016/j.semnephrol.2014.09.003> PMID:[25498377](https://pubmed.ncbi.nlm.nih.gov/25498377/)
13. Selman C, Tullet JM, Wieser D, Irvine E, Lingard SJ, Choudhury AI, Claret M, Al-Qassab H, Carmignac D, Ramadani F, Woods A, Robinson IC, Schuster E, et al. Ribosomal protein S6 kinase 1 signaling regulates mammalian life span. *Science.* 2009; 326:140–44. <https://doi.org/10.1126/science.1177221> PMID:[19797661](https://pubmed.ncbi.nlm.nih.gov/19797661/)
14. Harrison DE, Strong R, Sharp ZD, Nelson JF, Astle CM, Flurkey K, Nadon NL, Wilkinson JE, Frenkel K, Carter CS, Pahor M, Javors MA, Fernandez E, Miller RA. Rapamycin fed late in life extends lifespan in genetically heterogeneous mice. *Nature.* 2009; 460:392–95. <https://doi.org/10.1038/nature08221> PMID:[19587680](https://pubmed.ncbi.nlm.nih.gov/19587680/)
15. Martin TD, Chen XW, Kaplan RE, Saltiel AR, Walker CL, Reiner DJ, Der CJ. Ral and Rheb GTPase activating proteins integrate mTOR and GTPase signaling in aging, autophagy, and tumor cell invasion. *Mol Cell.* 2014; 53:209–20. <https://doi.org/10.1016/j.molcel.2013.12.004> PMID:[24389102](https://pubmed.ncbi.nlm.nih.gov/24389102/)
16. Lenoir O, Tharaux PL, Huber TB. Autophagy in kidney disease and aging: lessons from rodent models. *Kidney Int.* 2016; 90:950–64. <https://doi.org/10.1016/j.kint.2016.04.014> PMID:[27325184](https://pubmed.ncbi.nlm.nih.gov/27325184/)
17. Xu X, Roe ND, Weiser-Evans MC, Ren J. Inhibition of mammalian target of rapamycin with rapamycin reverses hypertrophic cardiomyopathy in mice with cardiomyocyte-specific knockout of PTEN. *Hypertension.* 2014; 63:729–39. <https://doi.org/10.1161/HYPERTENSIONAHA.113.02526> PMID:[24446058](https://pubmed.ncbi.nlm.nih.gov/24446058/)
18. Fourcade S, Ferrer I, Pujol A. Oxidative stress, mitochondrial and proteostasis malfunction in

- adrenoleukodystrophy: A paradigm for axonal degeneration. *Free Radic Biol Med.* 2015; 88:18–29.
<https://doi.org/10.1016/j.freeradbiomed.2015.05.041>
 PMID:26073123
19. U.S. Renal Data System, USRDS 2013 Annual Data Report: Atlas of Chronic Kidney Disease and End-Stage Renal Disease in the United States. Natl Institutes Heal Natl Inst Diabetes Dig Kidney Dis Bethesda, MD. 2013.
 20. Ojo AO. Cardiovascular complications after renal transplantation and their prevention. *Transplantation.* 2006; 82:603–11.
<https://doi.org/10.1097/01.tp.0000235527.81917.fe>
 PMID:16969281
 21. Liefeldt L, Budde K. Risk factors for cardiovascular disease in renal transplant recipients and strategies to minimize risk. *Transpl Int.* 2010; 23:1191–204.
<https://doi.org/10.1111/j.1432-2277.2010.01159.x>
 PMID:21059108
 22. Jardine AG, Gaston RS, Fellstrom BC, Holdaas H. Prevention of cardiovascular disease in adult recipients of kidney transplants. *Lancet.* 2011; 378:1419–27.
[https://doi.org/10.1016/S0140-6736\(11\)61334-2](https://doi.org/10.1016/S0140-6736(11)61334-2)
 PMID:22000138
 23. Zhang W, Fung J. Limitations of current liver transplant immunosuppressive regimens: renal considerations. *Hepatobiliary Pancreat Dis Int.* 2017; 16:27–32.
[https://doi.org/10.1016/s1499-3872\(16\)60167-4](https://doi.org/10.1016/s1499-3872(16)60167-4)
 PMID:28119255
 24. Berger SP, Sommerer C, Witzke O, Tedesco H, Chadban S, Mulgaonkar S, Qazi Y, de Fijter JW, Oppenheimer F, Cruzado JM, Watarai Y, Massari P, Legendre C, et al, and TRANSFORM investigators. Two-year outcomes in de novo renal transplant recipients receiving everolimus-facilitated calcineurin inhibitor reduction regimen from the TRANSFORM study. *Am J Transplant.* 2019; 19:3018–34.
<https://doi.org/10.1111/ajt.15480> PMID:31152476
 25. Stallone G, Pontrelli P, Infante B, Gigante M, Netti GS, Ranieri E, Grandaliano G, Gesualdo L. Rapamycin induces ILT3(high)ILT4(high) dendritic cells promoting a new immunoregulatory pathway. *Kidney Int.* 2014; 85:888–97.
<https://doi.org/10.1038/ki.2013.337>
 PMID:24107844
 26. Stallone G, Infante B, Di Lorenzo A, Rascio F, Zaza G, Grandaliano G. mTOR inhibitors effects on regulatory T cells and on dendritic cells. *J Transl Med.* 2016; 14:152.
<https://doi.org/10.1186/s12967-016-0916-7>
 PMID:27245075
 27. Pesce F, Martino M, Fiorentino M, Rollo T, Simone S, Gallo P, Stallone G, Grandaliano G, Schena A, Margiotta M, Mininni D, Palieri R, Lucarelli G, et al. Recurrent urinary tract infections in kidney transplant recipients during the first-year influence long-term graft function: A single-center retrospective cohort study. *J Nephrol.* 2019; 32:661–68.
<https://doi.org/10.1007/s40620-019-00591-5>
 PMID:30701457
 28. Lucarelli G, Dittono P, Bettocchi C, Vavallo A, Rutigliano M, Galleggiant V, Larocca AM, Castellano G, Gesualdo L, Grandaliano G, Selvaggi FP, Battaglia M. Diagnostic and prognostic role of preoperative circulating CA 15-3, CA 125, and beta-2 microglobulin in renal cell carcinoma. *Dis Markers.* 2014; 2014:689795.
<https://doi.org/10.1155/2014/689795> PMID:24692843
 29. Nagueh SF, Smiseth OA, Appleton CP, Byrd BF 3rd, Dokainish H, Edvardsen T, Flachskampf FA, Gillebert TC, Klein AL, Lancellotti P, Marino P, Oh JK, Alexandru Popescu B, Waggoner AD, and Houston, Texas; Oslo, Norway; Phoenix, Arizona; Nashville, Tennessee; Hamilton, Ontario, Canada; Uppsala, Sweden; Ghent and Liège, Belgium; Cleveland, Ohio; Novara, Italy; Rochester, Minnesota; Bucharest, Romania; and St. Louis, Missouri. Recommendations for the evaluation of left ventricular diastolic function by echocardiography: An update from the American society of echocardiography and the European association of cardiovascular imaging. *Eur Heart J Cardiovasc Imaging.* 2016; 17:1321–60.
<https://doi.org/10.1093/ehjci/jew082> PMID:27422899
 30. Lang RM, Badano LP, Mor-Avi V, Afilalo J, Armstrong A, Ernande L, Flachskampf FA, Foster E, Goldstein SA, Kuznetsova T, Lancellotti P, Muraru D, Picard MH, et al. Recommendations for cardiac chamber quantification by echocardiography in adults: An update from the American society of echocardiography and the European association of cardiovascular imaging. *J Am Soc Echocardiogr.* 2015; 28:1–39.e14.
<https://doi.org/10.1016/j.echo.2014.10.003>
 PMID:25559473
 31. Correale M, Totaro A, Ferraretti A, Musaico F, Passero T, De Rosa F, Abruzzese S, Ieva R, Di Biase M, Brunetti ND. Additional prognostic value of EAS index in predicting the occurrence of rehospitalizations in chronic heart failure: data from the daunia heart failure registry. *Eur J Clin Invest.* 2015; 45:1098–105.
<https://doi.org/10.1111/eci.12514>
 PMID:26255786
 32. Rascio F, Pontrelli P, Accetturo M, Oranger A, Gigante M, Castellano G, Gigante M, Zito A, Zaza G, Lupo A, Ranieri E, Stallone G, Gesualdo L, Grandaliano G. A type I interferon signature characterizes chronic antibody-mediated rejection in kidney transplantation. *J Pathol.* 2015; 237:72–84.

- <https://doi.org/10.1002/path.4553>
PMID:25925804
33. Dell'Oglio MP, Zaza G, Rossini M, Divella C, Pontrelli P, Verrienti R, Rutigliano M, Ditunno P, Stifanelli P, Ancona N, Schena FP, Grandaliano G. The anti-fibrotic effect of mycophenolic acid-induced neutral endopeptidase. *J Am Soc Nephrol.* 2010; 21:2157–68.
<https://doi.org/10.1681/ASN.2010020181>
PMID:20864690
34. Bellanti F, Villani R, Tamborra R, Blonda M, Iannelli G, di Bello G, Facciorusso A, Poli G, Iuliano L, Avolio C, Vendemiale G, Serviddio G. Synergistic interaction of fatty acids and oxysterols impairs mitochondrial function and limits liver adaptation during nafld progression. *Redox Biol.* 2018; 15:86–96.
<https://doi.org/10.1016/j.redox.2017.11.016>
PMID:29220698
35. Bellanti F, Romano AD, Lo Buglio A, Castriotta V, Guglielmi G, Greco A, Serviddio G, Vendemiale G. Oxidative stress is increased in sarcopenia and associated with cardiovascular disease risk in sarcopenic obesity. *Maturitas.* 2018; 109:6–12.
<https://doi.org/10.1016/j.maturitas.2017.12.002>
PMID:29452783
36. Erel O. A novel automated method to measure total antioxidant response against potent free radical reactions. *Clin Biochem.* 2004; 37:112–19.
<https://doi.org/10.1016/j.clinbiochem.2003.10.014>
PMID:14725941
37. Muntner P, He J, Hamm L, Loria C, Whelton PK. Renal insufficiency and subsequent death resulting from cardiovascular disease in the United States. *J Am Soc Nephrol.* 2002; 13:745–53.
PMID:11856780
38. Henry RM, Kostense PJ, Bos G, Dekker JM, Nijpels G, Heine RJ, Bouter LM, Stehouwer CD. Mild renal insufficiency is associated with increased cardiovascular mortality: the Hoorn study. *Kidney Int.* 2002; 62:1402–07.
<https://doi.org/10.1111/j.1523-1755.2002.kid571.x>
PMID:12234312
39. Abbott KC, Yuan CM, Taylor AJ, Cruess DF, Agodoa LY. Early renal insufficiency and hospitalized heart disease after renal transplantation in the era of modern immunosuppression. *J Am Soc Nephrol.* 2003; 14:2358–65.
<https://doi.org/10.1097/01.asn.0000083008.25305.67>
PMID:12937314
40. Meier-Kriesche HU, Baliga R, Kaplan B. Decreased renal function is a strong risk factor for cardiovascular death after renal transplantation. *Transplantation.* 2003; 75:1291–95.
<https://doi.org/10.1097/01.TP.0000061602.03327.E2>
PMID:12717218
41. Soveri I, Holdaas H, Jardine A, Gimpelewicz C, Staffler B, Fellström B. Renal transplant dysfunction—importance quantified in comparison with traditional risk factors for cardiovascular disease and mortality. *Nephrol Dial Transplant.* 2006; 21:2282–89.
<https://doi.org/10.1093/ndt/gfl095> PMID:16574686
42. Weiner DE, Carpenter MA, Levey AS, Ivanova A, Cole EH, Hunsicker L, Kasiske BL, Kim SJ, Kusek JW, Bostom AG. Kidney function and risk of cardiovascular disease and mortality in kidney transplant recipients: the FAVORIT trial. *Am J Transplant.* 2012; 12:2437–45.
<https://doi.org/10.1111/j.1600-6143.2012.04101.x>
PMID:22594581
43. Jardine AG, Fellström B, Logan JO, Cole E, Nyberg G, Grönhagen-Riska C, Madsen S, Neumayer HH, Maes B, Ambühl P, Olsson AG, Pedersen T, Holdaas H. Cardiovascular risk and renal transplantation: post hoc analyses of the assessment of lescol in renal transplantation (ALERT) study. *Am J Kidney Dis.* 2005; 46:529–36.
<https://doi.org/10.1053/j.ajkd.2005.05.014>
PMID:16129216
44. Israni AK, Snyder JJ, Skeans MA, Peng Y, Maclean JR, Weinhandl ED, Kasiske BL, and PORT Investigators. Predicting coronary heart disease after kidney transplantation: patient outcomes in renal transplantation (PORT) study. *Am J Transplant.* 2010; 10:338–53.
<https://doi.org/10.1111/j.1600-6143.2009.02949.x>
PMID:20415903
45. Nankivell BJ, Borrows RJ, Fung CL, O'Connell PJ, Allen RD, Chapman JR. The natural history of chronic allograft nephropathy. *N Engl J Med.* 2003; 349:2326–33.
<https://doi.org/10.1056/NEJMoa020009>
PMID:14668458
46. Lucarelli G, Bettocchi C, Battaglia M, Impedovo SV, Vavallo A, Grandaliano G, Castellano G, Schena FP, Selvaggi FP, Ditunno P. Extended criteria donor kidney transplantation: comparative outcome analysis between single versus double kidney transplantation at 5 years. *Transplant Proc.* 2010; 42:1104–07.
<https://doi.org/10.1016/j.transproceed.2010.03.059>
PMID:20534234
47. Nankivell BJ, P'Ng CH, O'Connell PJ, Chapman JR. Calcineurin inhibitor nephrotoxicity through the lens of longitudinal histology: comparison of cyclosporine and tacrolimus eras. *Transplantation.* 2016; 100:1723–31.
<https://doi.org/10.1097/TP.0000000000001243>
PMID:27306529

48. Webster A, Woodroffe RC, Taylor RS, Chapman JR, Craig JC. Tacrolimus versus cyclosporin as primary immunosuppression for kidney transplant recipients. *Cochrane Database Syst Rev.* 2005; 4:CD003961. <https://doi.org/10.1002/14651858.CD003961.pub2> PMID:[16235347](https://pubmed.ncbi.nlm.nih.gov/16235347/)
49. Kurosu H, Yamamoto M, Clark JD, Pastor JV, Nandi A, Gurnani P, McGuinness OP, Chikuda H, Yamaguchi M, Kawaguchi H, Shimomura I, Takayama Y, Herz J, et al. Suppression of aging in mice by the hormone klotho. *Science.* 2005; 309:1829–33. <https://doi.org/10.1126/science.1112766> PMID:[16123266](https://pubmed.ncbi.nlm.nih.gov/16123266/)
50. Urakawa I, Yamazaki Y, Shimada T, Iijima K, Hasegawa H, Okawa K, Fujita T, Fukumoto S, Yamashita T. Klotho converts canonical FGF receptor into a specific receptor for FGF23. *Nature.* 2006; 444:770–74. <https://doi.org/10.1038/nature05315> PMID:[17086194](https://pubmed.ncbi.nlm.nih.gov/17086194/)
51. Gigante M, Lucarelli G, Divella C, Netti GS, Pontrelli P, Cafiero C, Grandaliano G, Castellano G, Rutigliano M, Stallone G, Bettocchi C, Ditunno P, Gesualdo L, et al. Soluble serum α Klotho is a potential predictive marker of disease progression in clear cell renal cell carcinoma. *Medicine (Baltimore).* 2015; 94:e1917. <https://doi.org/10.1097/MD.0000000000001917> PMID:[26559258](https://pubmed.ncbi.nlm.nih.gov/26559258/)
52. Schwarz C, Böhmig GA, Steininger R, Mayer G, Oberbauer R. Impaired phosphate handling of renal allografts is aggravated under rapamycin-based immunosuppression. *Nephrol Dial Transplant.* 2001; 16:378–82. <https://doi.org/10.1093/ndt/16.2.378> PMID:[11158416](https://pubmed.ncbi.nlm.nih.gov/11158416/)
53. Kempe DS, Dërmaku-Sopjani M, Fröhlich H, Sopjani M, Umbach A, Puchchakayala G, Capasso A, Weiss F, Stübs M, Föller M, Lang F. Rapamycin-induced phosphaturia. *Nephrol Dial Transplant.* 2010; 25:2938–44. <https://doi.org/10.1093/ndt/gfq172> PMID:[20368307](https://pubmed.ncbi.nlm.nih.gov/20368307/)
54. Tataranni T, Biondi G, Cariello M, Mangino M, Colucci G, Rutigliano M, Ditunno P, Schena FP, Gesualdo L, Grandaliano G. Rapamycin-induced hypophosphatemia and insulin resistance are associated with mTORC2 activation and Klotho expression. *Am J Transplant.* 2011; 11:1656–64. <https://doi.org/10.1111/j.1600-6143.2011.03590.x> PMID:[21672148](https://pubmed.ncbi.nlm.nih.gov/21672148/)
55. Lakatta EG. Cardiovascular aging research: the next horizons. *J Am Geriatr Soc.* 1999; 47:613–25. <https://doi.org/10.1111/j.1532-5415.1999.tb02579.x> PMID:[10323658](https://pubmed.ncbi.nlm.nih.gov/10323658/)
56. Judge S, Leeuwenburgh C. Cardiac mitochondrial bioenergetics, oxidative stress, and aging. *Am J Physiol Cell Physiol.* 2007; 292:C1983–92. <https://doi.org/10.1152/ajpcell.00285.2006> PMID:[17344313](https://pubmed.ncbi.nlm.nih.gov/17344313/)
57. Wojtovich AP, Nadtochiy SM, Brookes PS, Nehrke K. Ischemic preconditioning: the role of mitochondria and aging. *Exp Gerontol.* 2012; 47:1–7. <https://doi.org/10.1016/j.exger.2011.11.001> PMID:[22100642](https://pubmed.ncbi.nlm.nih.gov/22100642/)
58. Ago T, Matsushima S, Kuroda J, Zablocki D, Kitazono T, Sadoshima J. The NADPH oxidase Nox4 and aging in the heart. *Aging (Albany NY).* 2010; 2:1012–16. <https://doi.org/10.18632/aging.100261> PMID:[21212466](https://pubmed.ncbi.nlm.nih.gov/21212466/)
59. Simone S, Rascio F, Castellano G, Divella C, Chieti A, Ditunno P, Battaglia M, Crovace A, Staffieri F, Oortwijn B, Stallone G, Gesualdo L, Pertosa G, Grandaliano G. Complement-dependent NADPH oxidase enzyme activation in renal ischemia/reperfusion injury. *Free Radic Biol Med.* 2014; 74:263–73. <https://doi.org/10.1016/j.freeradbiomed.2014.07.003> PMID:[25017967](https://pubmed.ncbi.nlm.nih.gov/25017967/)
60. Conti V, Izzo V, Corbi G, Russomanno G, Manzo V, De Lise F, Di Donato A, Filippelli A. Antioxidant supplementation in the treatment of aging-associated diseases. *Front Pharmacol.* 2016; 7:24. <https://doi.org/10.3389/fphar.2016.00024> PMID:[26903869](https://pubmed.ncbi.nlm.nih.gov/26903869/)
61. Cardoso AL, Fernandes A, Aguilar-Pimentel JA, de Angelis MH, Guedes JR, Brito MA, Ortolano S, Pani G, Athanasopoulou S, Gonos ES, Schosserer M, Grillari J, Peterson P, et al. Towards frailty biomarkers: candidates from genes and pathways regulated in aging and age-related diseases. *Ageing Res Rev.* 2018; 47:214–77. <https://doi.org/10.1016/j.arr.2018.07.004> PMID:[30071357](https://pubmed.ncbi.nlm.nih.gov/30071357/)
62. Mantovani A, Garlanda C, Bottazzi B, Peri G, Doni A, Martinez de la Torre Y, Latini R. The long pentraxin PTX3 in vascular pathology. *Vascul Pharmacol.* 2006; 45:326–30. <https://doi.org/10.1016/j.vph.2006.08.011> PMID:[17023219](https://pubmed.ncbi.nlm.nih.gov/17023219/)
63. Savchenko A, Imamura M, Ohashi R, Jiang S, Kawasaki T, Hasegawa G, Emura I, Iwanari H, Sagara M, Tanaka T, Hamakubo T, Kodama T, Naito M. Expression of pentraxin 3 (PTX3) in human atherosclerotic lesions. *J Pathol.* 2008; 215:48–55. <https://doi.org/10.1002/path.2314> PMID:[18220316](https://pubmed.ncbi.nlm.nih.gov/18220316/)
64. Napoleone E, Di Santo A, Bastone A, Peri G, Mantovani A, de Gaetano G, Donati MB, Lorenzet R. Long

- pentraxin PTX3 upregulates tissue factor expression in human endothelial cells: a novel link between vascular inflammation and clotting activation. *Arterioscler Thromb Vasc Biol.* 2002; 22:782–87.
<https://doi.org/10.1161/01.atv.0000012282.39306.64>
PMID:[12006390](https://pubmed.ncbi.nlm.nih.gov/12006390/)
65. Jenny NS, Arnold AM, Kuller LH, Tracy RP, Psaty BM. Associations of pentraxin 3 with cardiovascular disease and all-cause death: the cardiovascular health study. *Arterioscler Thromb Vasc Biol.* 2009; 29:594–99.
<https://doi.org/10.1161/ATVBAHA.108.178947>
PMID:[19164811](https://pubmed.ncbi.nlm.nih.gov/19164811/)
66. Flynn JM, O’Leary MN, Zambataro CA, Academia EC, Presley MP, Garrett BJ, Zykovich A, Mooney SD, Strong R, Rosen CJ, Kapahi P, Nelson MD, Kennedy BK, Melov S. Late-life rapamycin treatment reverses age-related heart dysfunction. *Aging Cell.* 2013; 12:851–62.
<https://doi.org/10.1111/accel.12109>
PMID:[23734717](https://pubmed.ncbi.nlm.nih.gov/23734717/)