



# Cholesterol and Lipoprotein Metabolism and Atherosclerosis: Recent Advances in Reverse Cholesterol Transport

Helen H. Wang,\* Gabriella Garruti,\*\* Min Liu,\*\*\* Piero Portincasa,\*\*\*\* David Q.-H. Wang\*

\* Department of Medicine, Division of Gastroenterology and Liver Diseases, Marion Bessin Liver Research Center, Albert Einstein College of Medicine, Bronx, NY 10461, USA;

\*\* Section of Endocrinology, Department of Emergency and Organ Transplantations, University of Bari "Aldo Moro" Medical School, Piazza G. Cesare 11, 70124 Bari, Italy;

\*\*\* Department of Pathology and Laboratory Medicine, University of Cincinnati College of Medicine, Cincinnati, OH 45237, USA;

\*\*\*\* Department of Biomedical Sciences and Human Oncology, Clinica Medica "A. Murri", University of Bari "Aldo Moro" Medical School, Bari, Italy.

## ABSTRACT

Atherosclerosis is characterized by lipid accumulation, inflammatory response, cell death and fibrosis in the arterial wall, and is a major pathological basis for ischemic coronary heart disease (CHD), which is the leading cause of morbidity and mortality in the USA and Europe. Intervention studies with statins have shown to reduce plasma LDL cholesterol concentrations and subsequently the risk of developing CHD. However, not all the aggressive statin therapy could decrease the risk of developing CHD. Many clinical and epidemiological studies have clearly demonstrated that the HDL cholesterol is inversely associated with risk of CHD and is a critical and independent component of predicting this risk. Elucidations of HDL metabolism give rise to therapeutic targets with potential to raising plasma HDL cholesterol levels, thereby reducing the risk of developing CHD. The concept of reverse cholesterol transport is based on the hypothesis that HDL displays a cardioprotective function, which is a process involved in the removal of excess cholesterol that is accumulated in the peripheral tissues (e.g., macrophages in the aortae) by HDL, transporting it to the liver for excretion into the feces via the bile. In this review, we summarize the latest advances in the role of the lymphatic route in reverse cholesterol transport, as well as the biliary and the non-biliary pathways for removal of cholesterol from the body. These studies will greatly increase the likelihood of discovering new lipid-lowering drugs, which are more effective in the prevention and therapeutic intervention of CHD that is the major cause of human death and disability worldwide.

**Key words.** Biliary lipid secretion. Cholesterol-lowering drugs. Coronary heart disease. Intestinal lipid absorption. Statins. Stroke.

## INTRODUCTION

Atherosclerosis is characterized by lipid accumulation, inflammatory response, cell death and fibrosis in the arterial wall, which is the pathological basis for ischemic coronary heart disease (CHD) and stroke, and is the leading cause of morbidity and mortality in the USA and other industrialized nations.<sup>1</sup> Major risk factors for atherosclerosis include high plasma levels of low-density lipoprotein (LDL) cholesterol and lipoprotein(a), as well as low plasma concentrations of high-density lipoprotein (HDL) cholesterol.<sup>2</sup> Because elevated LDL cholesterol levels are

a major causal factor for CHD and stroke and have been a primary target of therapy for more than thirty years, the potent HMG-CoA reductase inhibitors, statins have been developed to lower plasma LDL cholesterol levels and reduce the risk of adverse cardiovascular events.<sup>3</sup> Moreover, reducing LDL cholesterol levels to below current guideline targets further inhibits atherogenesis and decreases adverse coronary events.<sup>4-6</sup> Many clinical studies have found that statins can reduce new adverse cardiovascular events and CHD mortality by ~ 35%, but even aggressive statin therapy can not completely eliminate cardiovascular risk. Approximately 65% of the patients treated with stat-

ins still develop adverse cardiovascular events. Therefore, additional therapeutic interventions beyond statins are strongly needed to further reduce the risk of developing CHD and stroke.<sup>7</sup>

Cholesterol is essential for all cells in the body and it is used extensively as a major structural component of cell membranes and as a substrate for the synthesis of other steroids such as bile acids, vitamin D, and sex hormones such as estradiol, progesterone, androsterone and testosterone, as well as adrenocortical hormones such as aldosterone and cortisone. The liver and small intestine are two crucial organs for cholesterol homeostasis. Indeed, high cholesterol biosynthesis in the liver leads to more very-low-density lipoprotein (VLDL) secreted into plasma, thereby increasing plasma total and LDL cholesterol concentrations. Increased quantities of dietary cholesterol also cause plasma cholesterol concentrations to rise in most individuals. Accumulated evidence has clearly demonstrated that elevated total and LDL cholesterol levels in plasma are an important risk factor for the development of cardiovascular diseases in humans and laboratory animals.<sup>8</sup>

Because CHD is still a leading cause of death and disability in the USA and Europe, the National Cholesterol Education Program Adult Treatment Panel III guidelines<sup>9</sup> along with the 2012 update and the American Heart Association/American College of Cardiology recommendations<sup>4,5,10,11</sup> have suggested a much lower target for plasma LDL cholesterol concentrations (i.e., < 100 mg/dL) for individuals at high risk for adverse cardiovascular events. In this way, the total number of patients requiring more aggressive cholesterol-lowering treatment increases substantially. Because the cholesterol carried in LDL particles is derived mainly from both *de novo* synthesis and absorption from the diet, a better understanding of the regulatory mechanisms of hepatic cholesterol biosynthesis and intestinal cholesterol absorption should lead to novel approaches to the treatment and the prevention of CHD and stroke. Therefore, despite major advances in the treatment of atherogenic lipoproteins, substantial residual risk in patients with CHD and stroke is under intensive investigation.

Many epidemiological investigations and clinical studies have clearly demonstrated that the cholesterol contained within HDL is inversely associated with risk of CHD and is a critical component of predicting its risk.<sup>12</sup> The HDL particles were first found in the 1960s after isolation by ultracentrifugation. After a method to precipitate apoB-containing lipoproteins was established, it could determine the cholesterol content of HDL in individual healthy subjects and patients with CHD. As a result, large-scale epidemiological studies on the relationship between the plasma concentrations of HDL cholesterol and the prevalence of CHD were extensively performed. The Framingham Heart Study showed the first compelling evi-

dence of the strong inverse association between HDL cholesterol concentrations and CHD. Based on these epidemiological findings, a widely acknowledged concept was proposed that HDL might have properties that protect against CHD, leading to the idea that HDL is the “good” cholesterol, as opposed to LDL “bad” cholesterol. As a result, a new concept was addressed that therapeutic intervention to raise plasma HDL cholesterol concentrations would reduce risk of CHD, which was supported by a series of animal studies in the 1980s and 1990s. Subsequently, many advances were made in understanding the molecular and genetic regulation of plasma HDL metabolism.

Animal studies have found that the infusion of HDL into rabbits reduces a risk of developing diet-induced atherosclerosis.<sup>13</sup> In addition, atherosclerosis is protected in mice overexpressing apolipoprotein A-I (apoA-I), the major HDL protein, even a high-cholesterol and high-fat diet is fed. A further study that is performed in mice with pre-existing atherosclerosis finds that overexpression of apoA-I leads to regression of pre-existing atherosclerotic disease. Taken together, these animal studies and preclinical results match the epidemiological investigations and clinical studies, as well as strongly support the hypothesis that HDL is a key target for a novel therapeutic approach to reducing risks of developing atherosclerosis. However, human genetic analysis and some failed clinical trials have created skepticism about the importance of HDL on the prevention and the treatment of CHD. Despite the properties of HDL consistent with atheroprotection, the causal relationship between HDL and CHD is still unclear, so far. Nevertheless, drugs that raise HDL cholesterol concentrations and other approaches that promote HDL function such as reverse cholesterol transport are being extensively investigated. Based on these findings, many new concepts and mechanisms regarding the physiological functions of HDL have been proposed.

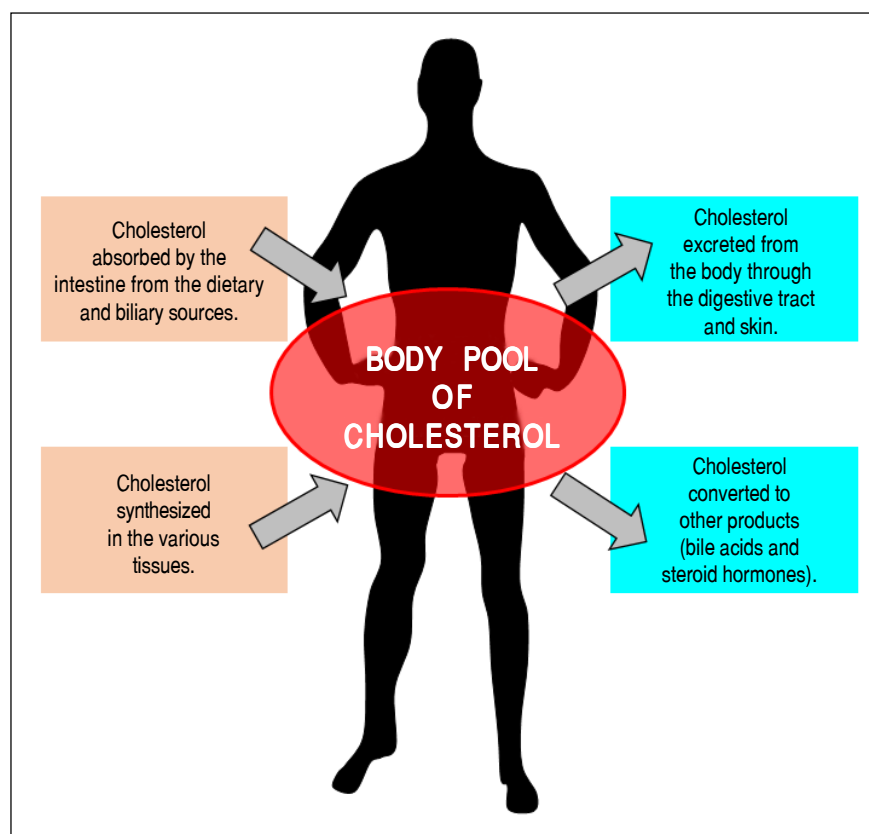
In this chapter, we summarize recent advances in the critical role of HDL in reverse cholesterol transport and atheroprotective mechanisms, as well as in the therapeutic options of hypercholesterolemia.

## OVERVIEW OF CHOLESTEROL AND LIPOPROTEIN METABOLISM IN THE BODY

It is well known that cholesterol is an important lipid component of virtually all cell membranes, as well as is the precursor of various steroid hormones such as the sex hormones (estrogen, testosterone, and progesterone) and corticosteroids (corticosterone, cortisol, cortisone, and aldosterone).<sup>14-17</sup> In addition, cholesterol is largely converted into bile acids during the biosynthesis of bile acids; this step, together with the simultaneous biliary

secretion of cholesterol and bile acids into bile, reduces plasma cholesterol concentrations and helps to remove excess amounts of cholesterol from the body. Figure 1 illustrates the general features of cholesterol balance across the body. Because almost all the cells in the body need a continuous supply of cholesterol, a complex series of transport, biosynthetic, and regulatory mechanisms have evolved in the human.<sup>18,19</sup> Furthermore, cholesterol is usually obtained from the intestinal absorption of dietary and biliary cholesterol and the newly synthesized *de novo* from acetyl CoA within the body. However, cholesterol cannot be metabolized to CO<sub>2</sub> and water in the body because human tissues do not possess enzymes that are able to degrade the ring structure of this sterol. Thus, to prevent a potentially hazardous accumulation of cholesterol in the human body, excess cholesterol has to be metabolized to other compounds and/or excreted in the feces. This challenging task is often done by modifying certain substituent groups on the hydrocarbon tail or on the ring structure of the cholesterol molecule. Consequently, cholesterol is largely excreted from the body either as the unaltered molecule (i.e., in both unesterified and esterified forms) or after biochemical modification to other sterol products such as bile acids and steroid hormones.

As shown in figure 2, several pathways have been identified for the net flow of cholesterol through the major tissue compartments of the human, which illustrates how the cholesterol pool in the body is kept essentially constant in the adult.<sup>20-22</sup> New cholesterol is added to the pool from two sources: the absorbed cholesterol from dietary and biliary sources across the epithelial cells of small intestinal tract and the newly synthesized cholesterol in a variety of different tissues within the body. The availability of dietary and biliary cholesterol to the body varies extremely in different animal species and even in the same species, and the consumed amounts of dietary cholesterol also vary strikingly from day to day.<sup>20-31</sup> The total amount of cholesterol from the small intestine to the body also depends mainly on the absorption efficiency of intestinal cholesterol and the amount of cholesterol that is consumed daily. Furthermore, bile cholesterol is reabsorbed by the small intestine, which provides about two thirds of the total amount of cholesterol originating from the intestine every day.<sup>8</sup> The rate of cholesterol biosynthesis in the liver varies extremely in different animal species and even in the same species. The absorbed cholesterol from the small intestine could regulate hepatic cholesterol synthesis, depending on the amount of daily food intake.

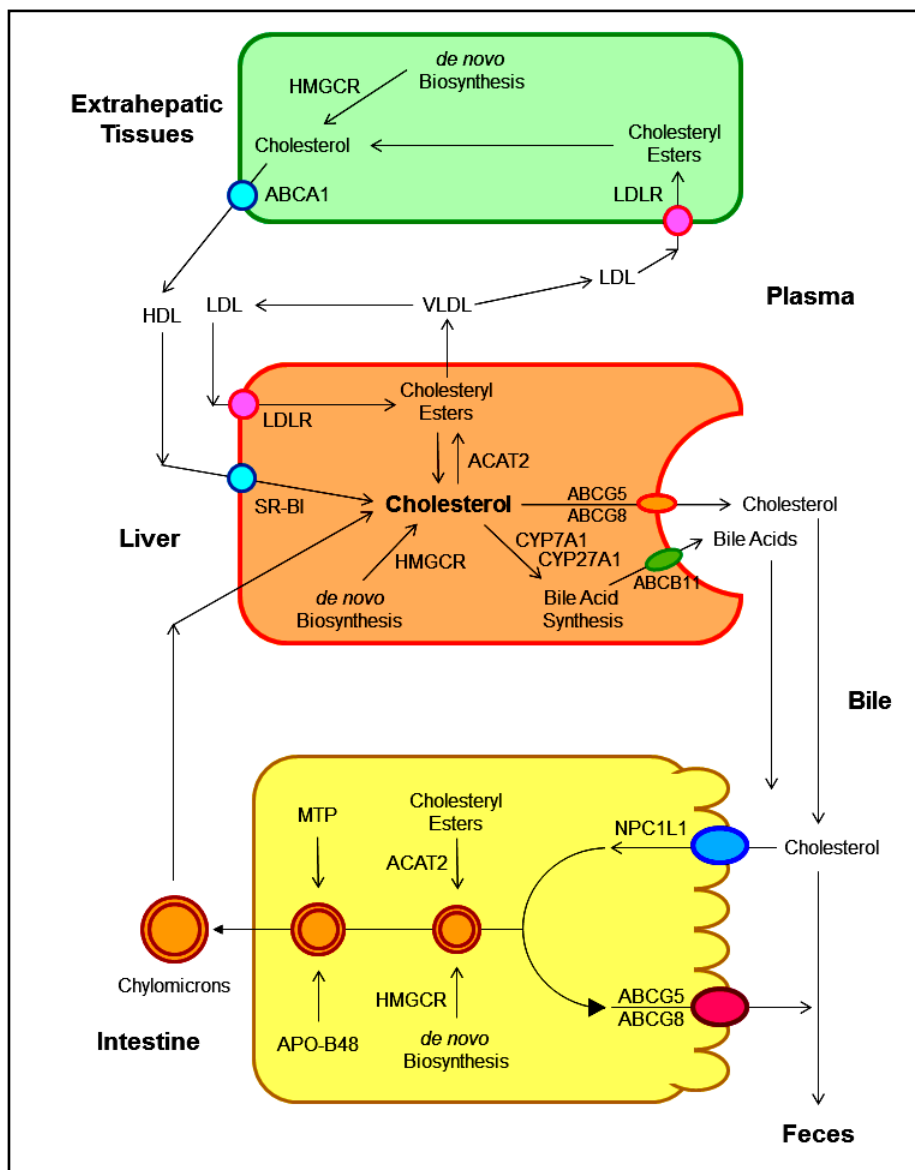


**Figure 1.** The general feature of cholesterol balance across the body. There are two major sources of cholesterol available for the body: (i) intestinal absorption of dietary and biliary cholesterol; and (ii) cholesterol biosynthesis in the various tissues, predominantly in the liver and intestine. Likewise, there are two main pathways for the excretion of cholesterol from the body: (i) the excretion of cholesterol from the body through the gastrointestinal tract and skin; and (ii) the conversion of cholesterol to other compounds such as bile acids and steroid hormones. Because total input of cholesterol into the body must equal total output in the steady state, the body pool of cholesterol can be fundamentally kept constant. As a result, it prevents a potential accumulation of excess cholesterol in the body. Of note is that in children, there is necessarily a greater input of cholesterol into the body than output since there is a net accumulation of cholesterol for keeping body weight growth. Reproduced with slightly modifications and permission from Wang DQ-H, Neuschwander-Tetri BA, Portincasa P (Eds). *The Biliary System*. Morgan & Claypool Life Sciences. The 2nd. Ed. Princeton, New Jersey: 2017.

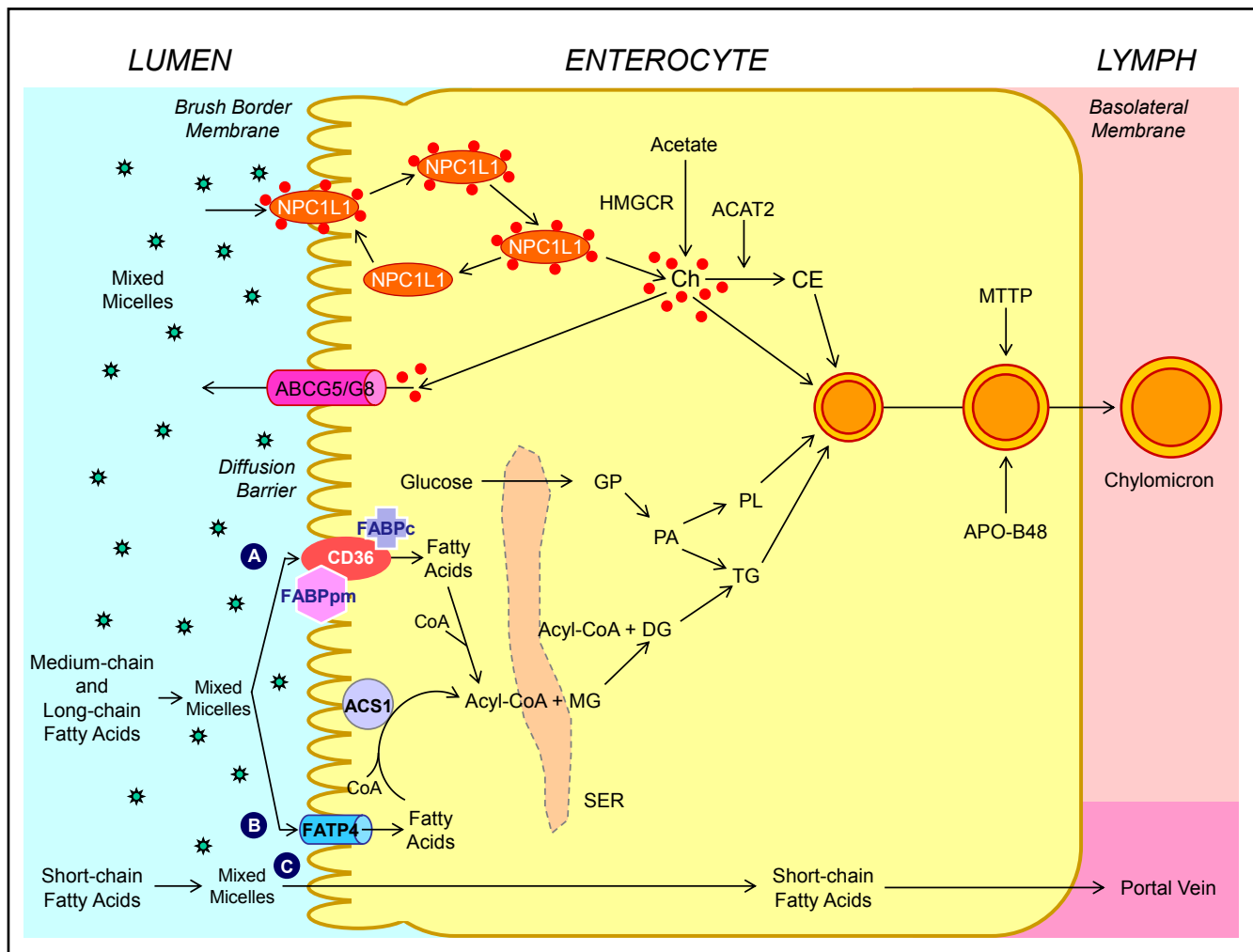
Human and animal studies have found that a transporter named the Niemann-Pick C1 like 1 (NPC1L1) protein is expressed in the apical membrane of enterocytes and plays a crucial role in the ezetimibe-sensitive cholesterol absorption pathway (Figure 3), which makes the influx of cholesterol and plant sterols from the intestinal lumen into the cytoplasm of enterocytes.<sup>32-36</sup> In contrast, the ATP-binding cassette (ABC) transporters ABCG5 and ABCG8 are apical sterol export pumps promoting active efflux of cholesterol and plant sterols from the enterocytes back into the intestinal lumen for fecal excretion.<sup>37-47</sup> These findings imply that intestinal cholesterol absorption is a multistep process that is regulated by multiple genes at the enterocyte level, and that the efficiency of cholesterol absorption is determined by the net effect be-

tween influx and efflux of intraluminal cholesterol molecules crossing the brush border membrane of the enterocyte.<sup>48</sup> In addition, 3-hydroxy-3-methylglutaryl CoA (HMG-CoA) reductase is the rate-limiting enzyme for cholesterol biosynthesis in the body.<sup>49-54</sup> Cholesterol that is synthesized *de novo* from acetyl CoA in different tissues (i.e., the liver and small intestine) is the second major source to the body.<sup>55-62</sup> Therefore, the sum of these two processes constitutes the total input of cholesterol into the body pool each day.

It has been found that there are two major pathways for the removal of cholesterol from the body. In humans and experimental animals, the hepatic secretion of biliary cholesterol crossing the canalicular membrane of hepatocytes is an important route for removing cholesterol from the



**Figure 2.** The metabolic pathways for the net flow of cholesterol through the major tissue compartments of the human. This diagram illustrates the major pathways for the net flow of cholesterol from the endoplasmic reticulum to the plasma membrane of the cells of the extrahepatic tissues, and through the circulation to the liver where cholesterol is secreted into bile and to the intestine, and eventually, excreted in the feces. The specific transporters and receptors that are involved in these pathways are shown with arrows indicating the direction of transport. ABC: ATP-binding cassette (transporter). ACAT: Acyl-coenzyme A:cholesterol acyltransferase. BA: Bile Acid. CM: Chylomicron. LCAT: Lecithin:cholesterol acyltransferase. LDLR: Low-density lipoprotein receptor. NPC1L1: Niemann-Pick C1-like 1 protein. Reproduced with slightly modifications and permission from Wang DQ-H, Neuschwander-Tetri BA, Portincasa P (Editors). *The Biliary System*. Morgan & Claypool Life Sciences. 2nd Ed. Princeton, New Jersey. 2017.



**Figure 3.** Molecular and cellular mechanisms of intestinal cholesterol and fatty acid absorption. Within the intestinal lumen, the micellar solubilization of sterols and fatty acids facilitates movement through the diffusion barrier overlying the surface of the absorptive cells. In the presence of bile acids, mixed micelles deliver large amounts of the cholesterol molecules to the aqueous-membrane interface so that the uptake rate is greatly increased. The Niemann-Pick C1 like 1 protein (NPC1L1), a sterol influx transporter, is located at the apical membrane of the enterocyte, and can actively facilitate the uptake of cholesterol by promoting the passage of cholesterol across the brush border membrane of the enterocyte. NPC1L1 appears to mediate cholesterol uptake via vesicular endocytosis and ezetimibe may inhibit cholesterol absorption by suppressing the internalization of NPC1L1/cholesterol complex. By contrast, ABCG5 and ABCG8 promote active efflux of cholesterol and plant sterols from the enterocyte back into the intestinal lumen for fecal excretion. The combined regulatory effects of NPC1L1 and ABCG5/G8 play a critical role in modulating the amount of cholesterol that reaches the lymph from the intestinal lumen. The absorbed cholesterol molecules, as well as some that are newly synthesized from acetate by 3-hydroxy-3-methylglutaryl-CoA reductase (HMGCR) within the enterocyte, are esterified to fatty acids by acyl-CoA:cholesterol acyltransferase isoform 2 (ACAT2) to form cholesterol esters. There are three putative pathways for uptake of fatty acids and their transport across the apical membranes of enterocytes. **A.** Short-chain fatty acids may traverse the apical membrane by simple passive diffusion and may be absorbed into the mesenteric venous blood and then the portal vein. **B.** Medium and long-chain fatty acids can be transported by fatty acid transport protein 4 (FATP4). **C.** Alternatively, CD36 (also referred to as fatty acid translocase), alone or together with the peripheral membrane protein plasma membrane-associated fatty acid-binding protein (FABPpm; 43 kDa) accepts medium and long-chain fatty acids at the cell surface to increase their local concentrations. This could help CD36 actively transport fatty acids across the apical membrane of the enterocyte. Once at the inner side of the membrane, these fatty acids are bound by cytoplasmic FABP (FABPc) before entering metabolic pathways. Some fatty acids may be transported by fatty acid transport proteins and rapidly activated by plasma membrane acyl-CoA synthetase 1 (ACS1) to form acyl-CoA esters. Monoacylglycerol (MG) may be taken up into enterocytes by facilitated transport. Acyl-CoA and monoacylglycerol are transported into the smooth endoplasmic reticulum (SER) where they are used for the synthesis of diacylglycerol (DG) and triacylglycerol (TG). Glucose is transported into the SER and contributes to the synthesis of phospholipids (PL) via  $\alpha$ -glycerol phosphate ( $\alpha$ GP). All of these lipids are involved in the assembly of chylomicrons, which also requires the synthesis of apoB48 and the activity of microsomal triglyceride transfer protein (MTP). The core of chylomicrons secreted in lymph contains triglycerides and cholesterol esters and their surface is a monolayer containing phospholipids (mainly phosphatidylcholine), unesterified cholesterol and apolipoproteins such as apoB-48, apoA-I and apoA-IV. Reproduced with slightly modifications and permission from Wang DQ-H, Cohen DE. Absorption and excretion of intestinal cholesterol and other sterols. In *Clinical Lipidology: A Companion to Braunwald's Heart Disease. The 2nd Edition*. Editor by Ballantyne CM. Elsevier Saunders. 2014; pp. 25-42.



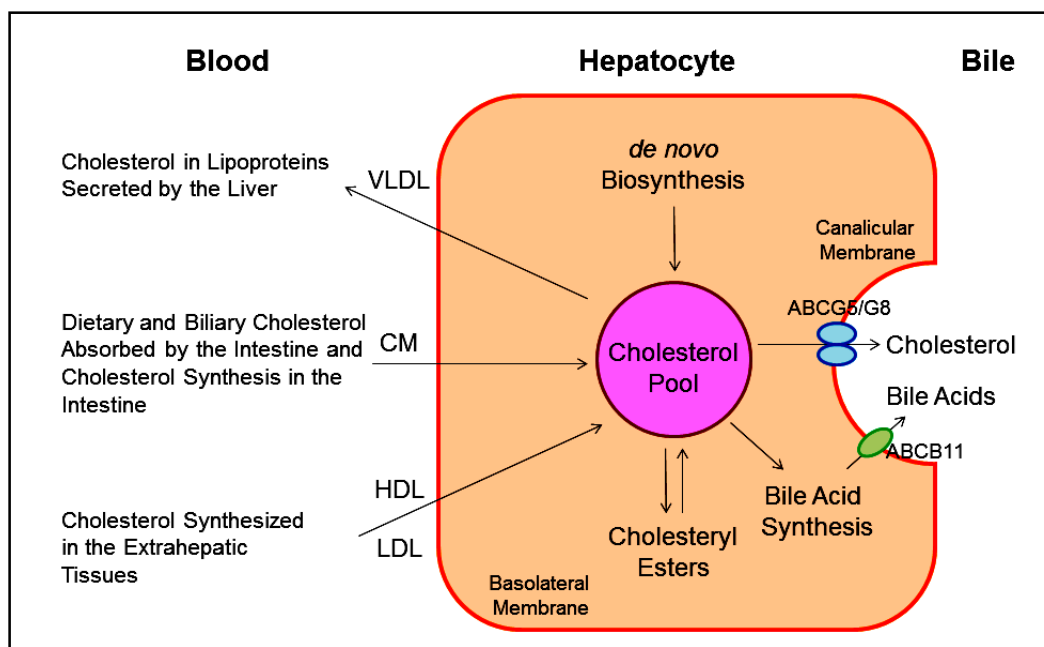
body (Figure 4). Moreover, the cholesterol molecule can be metabolized to other compounds such as bile acids, which, in turn, are excreted from the body through the intestinal tract and eventually in the feces. Of special note is that the sterol efflux transporters ABCG5 and ABCG8 on the canalicular membrane of hepatocytes are responsible for regulating hepatic secretion of biliary cholesterol,<sup>43,63-66</sup> and a bile acid export pump, ABCB11 is responsible for hepatic secretion of biliary bile acids.<sup>67</sup> These transporters in the liver play a critical role in the regulation of excretion of excess cholesterol from the body, either as unesterified cholesterol or as its metabolic products, bile acids. In addition, esterified and unesterified cholesterol is often lost directly from the body pool through the sloughing of oily secretions and cells from the skin, as well as through the desquamation of cells from the digestive tract.

Notably, in children and growing animals, the input of cholesterol into the body is necessarily greater than the output because a net accumulation of cholesterol is vital to maintain an increased body weight. However, once adulthood is reached and body weight becomes constant, a balance between input and output of cholesterol should be kept. In other words, the input of cholesterol into the body should be equal to the output.

Taken together, the regulatory mechanisms on cholesterol metabolism must be operative, which can accurately adjust the rate of cholesterol biosynthesis within the body and the rate of cholesterol excretion from the body to accommodate the varying amounts of cholesterol that are absorbed by the small intestine at different times. Basically, these regulatory mechanisms on cholesterol metabolism

work well. As a result, there is little net accumulation of excess cholesterol in the body, and yet sufficient cholesterol is always available to meet the metabolic needs of the various cells. However, delicate imbalances lead to an increase in plasma cholesterol concentration and/or hepatic cholesterol hypersecretion in humans.<sup>68-71</sup> In the cardiovascular system, this metabolic abnormality often causes an accumulation of excess cholesteryl ester molecules within the wall of arteries, leading to clinically apparent atherosclerosis mainly in the heart and brain.<sup>72-79</sup> In the biliary system, when an imbalance of cholesterol metabolism in bile occurs, gallbladder bile become supersaturated with cholesterol, thereby promoting the precipitation of plate-like solid cholesterol monohydrate crystals, and eventually, leading to clinically apparent cholesterol gallstone disease.<sup>80-90</sup>

It is well known that lipoproteins in plasma include a heterogeneous mixture of particles that vary by size, density, and buoyancy (Table 1). Analytic ultracentrifugation was first applied in the 1950s to the separations of lipoprotein particles by their rates of migration in an intense centrifugal field, i.e., HDL<sub>2</sub> (F<sub>1-20</sub> 3.5-9.0), HDL<sub>3</sub> (F<sub>1,20</sub> 0-3.5), LDL (S<sub>f</sub> 0-12), intermediate-density lipoproteins (IDL, S<sub>f</sub> 12-20), small VLDL (S<sub>f</sub> 20-100), and large VLDL (S<sub>f</sub> 100-400). These lipoprotein particles are still measured using a similar approach during its extensive uses through the 2010s. Obviously, analytic ultracentrifugation is the gold standard against which other techniques are calibrated. Although the instrument is further improved to analyze plasma lipoprotein mass concentrations within individual flotation intervals, the basic



**Figure 4.** This diagram shows cholesterol balance across the liver, indicating the major sources for cholesterol entering the hepatocyte and the main pathways for its disposition from the hepatocyte. CM: Chylomicron. Reproduced with slightly modifications and permission from Wang DQ-H, Neuschwander-Tetri BA, Portincasa P (Eds.). *The Biliary System*. Morgan & Claypool Life Sciences. The 2nd Ed. Princeton, New Jersey. 2017.

**Table 1.** Properties of human plasma lipoproteins.

Density range (g/mL)	Diameter (nm)	Lipoprotein fraction	Abbreviation	Major core lipids	Apolipoproteins
d < 0.930	80-500	Chylomicrons	CM	Exogenous TG	B-48, E, A-I, A-II, A-IV, C
0.950 < d < 1.006	30-80	Very-low-density lipoprotein	VLDL	Endogenous TG	B-100, C-I, C-II, C-III, E
1.006 < d < 1.019	25-35	Intermediate-density lipoprotein	IDL	Endogenous Ch esters	B-100, E
1.019 < d < 1.063	21.6	Low-density lipoprotein	LDL	Endogenous Ch esters	B-100
1.063 < d < 1.210	10	High-density lipoprotein	HDL	Endogenous Ch esters	A-I, A-II

Ch: cholesterol. TG: triglycerides.

methodology and the above-mentioned density intervals are still the same during their applications for basic and clinical studies.

In the 1950s and 1960s, a prospective study of male employees in the Livermore Radiation Laboratory was performed.<sup>91-94</sup> The 10 years of follow-up found that compared to mean plasma concentrations of the total sample, the 38 men who developed CHD had 32% lower HDL<sub>2</sub> (P < 0.01), 8% lower HDL<sub>3</sub> (P = 0.02), 13% higher LDL (P < 0.001), 23% higher IDL (P < 0.001), and 21% higher small VLDL (P < 0.01). Plasma mass concentrations of larger VLDL were 14% greater in men with CHD than the base population.<sup>91-94</sup> This prospective study is the first to relate HDL subfractions to the development of CHD. Moreover, it is found that the relationships of CHD to total cholesterol, to LDL, and to VLDL are reduced with increasing age, specifically after age 50.

Prospective population studies also find plasma LDL cholesterol concentrations as a positive predictor for patients with CHD and stroke.<sup>2</sup> Furthermore, intervention studies with statins have shown to reduce LDL cholesterol levels and subsequently the risk of developing CHD and stroke.<sup>3</sup> However, not all the aggressive statin therapy could reduce the risk of developing CHD and stroke. Further prospective population studies also identify a low HDL cholesterol level as an independent predictor for patients with CHD and stroke. This relationship persists even when LDL cholesterol levels are decreased to very low levels by therapeutic interventions with statins. Although HDL displays several potential atheroprotective properties against the development of atherosclerosis, there is still no direct evidence from clinical outcome trials in humans that raising HDL cholesterol concentrations will translate into a reduction in prevalence of CHD and stroke. Nevertheless, compelling evidence in both animal experiments and human studies demonstrate that HDL-raising therapies might reduce progression or even might promote regression of atheroma. These investigations lead to an extensive research effort to identify therapeutic interventions with the capacity to raise plasma HDL cholesterol concentrations as effectively as statins reduce plasma LDL cholesterol concentrations.

## REVERSE CHOLESTEROL TRANSPORT

Although the concept of reverse cholesterol transport was first proposed and the role of HDL in promoting this process was speculated in the mid-1960,<sup>95</sup> the hypothesis that HDL displays an cardioprotective function was supported by numerous animal studies in the 1980s and 1990s.<sup>96-99</sup> Many clinical studies have been performed to investigate whether raising plasma HDL cholesterol concentrations could reduce the risk of developing cardiovascular disease. Although most published reports attribute the atheroprotective properties of HDL to HDL<sub>2</sub>, many studies also find that HDL<sub>3</sub> may be inversely related to the risk of CHD. Currently, clinical investigations of HDL focus almost exclusively on the plasma total HDL cholesterol concentrations without regard to the individual HDL subclasses. Nevertheless, elucidations of HDL metabolism give rise to therapeutic targets with potential to raising plasma HDL cholesterol levels and reduce the risk of CHD.

### Classic pathway of reverse cholesterol transport

Classically, reverse cholesterol transport is a process involved in the removal of excess cholesterol that is accumulated in the peripheral tissues (e.g., macrophages in the aortae) by HDL, transporting it to the liver for excretion into the feces via the bile (Figure 5). Plasma HDL is the smallest lipoprotein particles and contains the highest proportion of apolipoproteins to lipids compared to LDL, VLDL and chylomicrons. The major HDL-associated apoA-I and apoA-II are secreted into plasma by the liver and the intestine, where they are lipidated to form lipid poor, discoidal, nascent HDL. Nascent HDL takes up cholesterol from cell membranes and other lipoproteins. Substantial evidence from epidemiological investigations and clinical studies has clearly demonstrated that the level of plasma HDL cholesterol, especially at average to slightly above average concentrations, is inversely related to the incidence of CHD and its thrombotic complications. Prospective population studies have found that humans with

HDL cholesterol levels of 6 to 7 mg/dL, i.e., higher than average, have a 20% to 27% decrease in the risk of developing CHD, and increasing HDL cholesterol levels by 1 mg/dL may reduce the risk of CHD by 2% in men and 3% in women. Raising plasma HDL cholesterol levels has been found to retard atherogenesis and protect against atherosclerosis in mice, rabbits, and humans. Furthermore, cardiovascular risk associated with HDL cholesterol concentrations is independent of plasma LDL cholesterol levels, as well as other lipid parameters (e.g., triglycerides and total cholesterol) and non-lipid risk factors. Therefore, it was proposed many years ago that therapeutic interventions of raising plasma HDL cholesterol concentrations could potentially reduce cardiovascular mortality.<sup>100</sup> Unexpectedly, pharmacologic interventions to increase HDL cholesterol levels by delaying HDL catabolism do not translate into a marked reduction in cardiovascular risk. Thus, the inability of therapies of raising HDL cholesterol concentrations and new insights into the complexity of HDL composition and function have prompted researchers to further explore whether and how HDL exerts its cardioprotective functions.<sup>101-103</sup>

Although the molecular and genetic mechanisms underlying its beneficial properties in humans are not fully understood, HDL is most widely recognized for its ability to promote lipid efflux from the macrophages and other cells in the extrahepatic tissues and transport cholesterol from the periphery to the liver for biliary secretion, and subsequently, fecal excretion during the process of reverse cholesterol transport, thereby reducing the deposition of cholesterol in the peripheral tissues, including the aortae.<sup>104-106</sup> Numerous animal studies have consistently found that HDL is protective on several processes that are involved in inhibiting atherosclerosis, at least in part by mediating the removal of cholesterol from lipid-laden macrophages through reverse cholesterol transport.<sup>97,107,108</sup> When reconstituted HDL or apoA-I is provided exogenously, regressive changes in atherosclerotic plaques are found in human studies. Transgenic expression of the human *APOA1* gene increases HDL and suppresses atherosclerosis in apoE (-/-) mice and genetic lowering of plasma HDL in mice reduces the appearance of macrophage-derived cholesterol in feces. Collectively, these results from human and animal studies have led to the idea that raising plasma HDL may be a new strategy for the treatment and the prevention of CHD and stroke.

#### **Importance of the lymphatic pathway in reverse cholesterol transport**

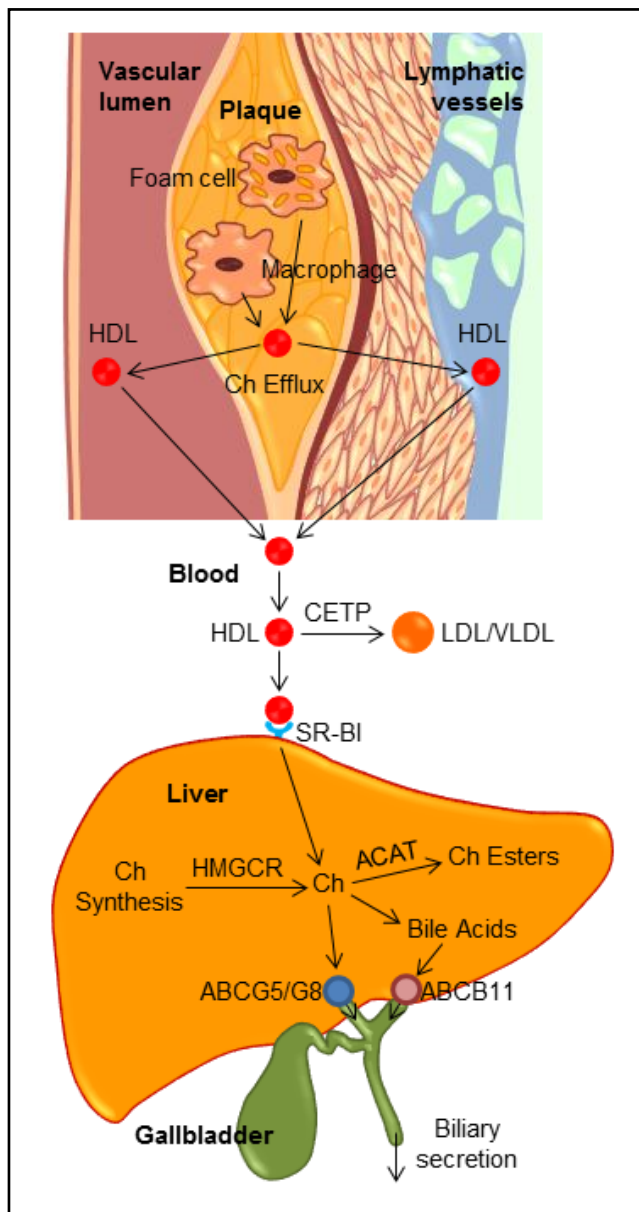
Accumulated evidence from human and animal studies has clearly demonstrated that one of the most important biological functions for HDL is to regulate reverse cho-

lesterol transport that promotes cholesterol transport from the peripheral tissues, including the aortae, to the liver for biliary excretion (Figure 5). This indicates that HDL plays a critical role in protecting against the development of atherosclerosis through reverse cholesterol transport. It is well known that plasma contains numerous HDL particles that are involved in reverse cholesterol transport.<sup>105</sup> In addition, it has long been suspected that the lymphatics may also play an important role in transporting newly effluxed cholesterol from the site of efflux to the circulation because interstitial and lymphatic fluid contains a lot of HDL and apoA-I.<sup>109</sup> It is estimated that there is a lymph transport of more than 300 mg per day in humans.<sup>110</sup> Most importantly, recent observations have found that the lymphatic vessel route is critical for efficient reverse cholesterol transport from multiple tissues, including the arterial wall.<sup>111</sup> Removal of cholesterol by lymphatic vessels is dependent on the uptake and transcytosis of HDL by scavenger receptor class B type I (SR-BI) expressed on lymphatic endothelium,<sup>112</sup> which challenges the current view that lymphatic endothelium is a passive exchange barrier for cholesterol transport. Accordingly, these findings may connect lymphatic function to atherosclerosis because lymphatic transport function may facilitate cholesterol clearance in therapies aimed at reversing atherosclerosis.<sup>113-115</sup> However, further studies are needed to investigate whether there are differences in HDL cholesterol levels and HDL particle sizes and compositions between lymph and plasma, as well as in the regulation of the HDL-mediated reverse cholesterol transport through the lymphatic vessel route compared to the classic plasma pathway.

#### **Transintestinal cholesterol excretion (TICE), a secondary, non-biliary pathway contributing to reverse cholesterol transport**

As discussed above, the classic view of reverse cholesterol transport is that this important route involves the transporting of excess cholesterol accumulating within peripheral tissues back to the liver for hepatic secretion into bile, and eventually, to the intestine for excretion in the feces (Figure 6). Based on some studies on patients with hepatobiliary and/or pancreatic disorders and several animal models with obstruction of the bile duct or cholestasis, a novel non-biliary transport route for reverse cholesterol transport was proposed in the late 1950s.<sup>116</sup> These studies were criticized regarding the selection of patients and animal models with the disordered condition because dramatic reduction in bile flow entering the small intestine could damage the function of the epithelial cells of intestine and lead to a striking decrease in the intestinal absorption of lipids due to a lack of bile acids. Such exper-



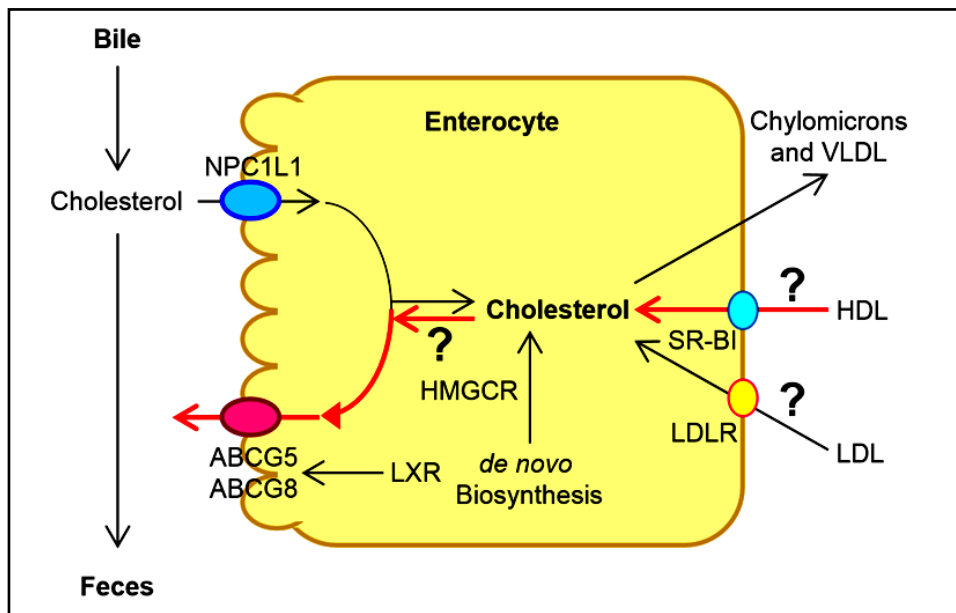


**Figure 5.** The reverse cholesterol transport through both the classic plasma pathway and the lymphatic vessel route to the liver for biliary secretion. ABC: ATP-binding cassette transporter. ACAT: Acyl-CoA:Cholesterol acyltransferase. CETP: Cholesteryl ester transfer protein. Ch: Cholesterol. HMGCR: HMG-CoA reductase. SR-BI: HDL receptor.

imental results were also questioned because these studies were performed under conditions of severe hepatobiliary disease and inappropriate experimental approaches, fecal neutral sterols in the feces are markedly increased. As a result, the transintestinal cholesterol excretion (TICE) was not accepted even though this new concept challenged the classic view of reverse cholesterol transport by showing that the intestine also significantly contributes to mass fecal neutral sterol excretion, independent of the biliary

cholesterol excretion route. In the mid-2000, using different mouse models with new experimental methods, some intriguing results were reported that direct transintestinal excretion of plasma-derived cholesterol might contribute to reverse cholesterol transport in mice.<sup>117,118</sup> Based on the results from these animal experiments, it is estimated that this non-biliary route may account for ~30% of total fecal neutral sterol excretion under basal conditions and could be modulated by liver X receptor (LXR), peroxisome proliferator-activated receptor-delta (PPAR- $\delta$ ), and farnesoid X receptor (FXR).<sup>119-121</sup> Subsequently, compelling evidence from animal experiments suggests that this pathway might represent a novel therapeutic target to increase reverse cholesterol transport and thereby confer protection against atherosclerosis.<sup>121</sup> Although *in vitro* evidence for the activity of this pathway has been reported in explants from human small intestine mounted in Ussing chambers,<sup>122</sup> the existence and importance of the TICE route in humans have been unclear because of some difficult technical issues and methodology.

More recently, the contribution of TICE to total fecal neutral sterol excretion is investigated in humans.<sup>123</sup> Using a cholesterol balance approach with combined stable isotopes that label cholesterol and bile acid molecules, the body cholesterol fluxes are determined in 15 male subjects with mild hypercholesterolemia. After 4 weeks of ezetimibe (10 mg/day) treatment for inhibiting the intestinal cholesterol influx transporter NPC1L1, the same studies are performed in 10 of the subjects consuming a regular meal. Under basal conditions, approximately 65% of daily fecal neutral sterol excretion is originated from biliary secretion and the remainder (~35%) is highly likely to be derived from the TICE. Furthermore, total fecal neutral sterol excretion is increased by 4-fold in ezetimibe-treated subjects possibly through the TICE. To further confirm the results observed in the human, chow-fed *Abcg8* knockout and wild-type mice are treated with ezetimibe at 0 or 8 mg/kg/day for 2 weeks. Under such experimental conditions, most of the ezetimibe-induced TICE flux is likely to be determined by the intestinal sterol efflux transporters *Abcg5/g8*. These results implied that TICE does exist in humans and most of ezetimibe-induced TICE flux may be regulated by *Abcg5/g8*. Therefore, the TICE may be a novel target to promote the removal of excess cholesterol from the body in patients at risk for CHD and stroke. It is highly likely that the TICE is an alternative route to the biliary pathway of reverse cholesterol transport. Notably, more experiments are strongly needed to investigate the molecular and cellular mechanisms underlying the critical role of the TICE in the regulation of reverse cholesterol transport in the human.<sup>124</sup> Moreover, it is still unclear whether the TICE could excrete more cholesterol from the body in patients



**Figure 6.** Schematic diagram of the proposed transintestinal cholesterol excretion (TICE) pathway, as showed in red lines. Reproduced with slightly modifications and permission from Wang DQ-H, Portincasa P, Tso P. *Hepatology* 2017; 66: 1337-40.

with hypercholesterolemia, and whether the TICE works together with the classic biliary pathway, or is fully independent from the latter. More studies are also needed to explore whether the TICE is related to the absorption efficiency of intestinal cholesterol because ABCG5/G8 plays a critical role in the regulation of both the TICE and intestinal cholesterol absorption. If such a hypothesis is working, it is more interesting to explore whether there is a difference between the fasting state and the fed condition for the TICE to regulate plasma cholesterol, LDL and HDL metabolism. Obviously, TICE's importance relative to the biliary pathway for reverse cholesterol transport is still awaiting further investigations with new experimental techniques. More importantly, whether the molecular and genetic regulation of the TICE is related to the prevalence of cardiovascular disease is still an attractive question.<sup>124</sup> Overall, the TICE might provide a novel target for a therapeutic intervention aiming at reducing the risk of developing CHD and stroke.

## MANAGEMENT OF HYPERCHOLESTEROLEMIA

The potent cholesterol-lowering agents, statins have been recommended as first-line therapy in treatment guidelines of hypercholesterolemia (Figure 7), and other four classes of less commonly used compounds are often considered as second-line lipid-lowering agents, including:

- The intestinal cholesterol absorption inhibitors (e.g., ezetimibe);
- Fibrates;

- Niacin-based preparations; and
- Bile acid sequestrants (e.g., cholestyramine, resins, and colestipol).

Clinical studies have found that among these lipid-lowering agents, statins are strikingly effective in reducing risk of developing CHD and stroke, as well as in extending life when prescribed to appropriate patients.

It is well known that statins are HMG-CoA reductase inhibitors. They suppress cholesterol biosynthesis in the liver by inhibiting the enzymatic activity of HMG-CoA reductase, as well as increase the number of hepatic LDL receptors to help clear the plasma LDL (i.e., "bad" cholesterol). Available since the late 1980's, statins, including atorvastatin, simvastatin and rosuvastatin, have been extensively prescribed to patients with hypercholesterolemia. Statins have been found to prevent cardiovascular diseases such as CHD and stroke in those subjects who are at high risk. It has clearly demonstrated that statins are effective in treating CHD and stroke in the early stages of a disease (secondary prevention). The evidence is weaker that statins are effective for those with elevated cholesterol levels but without cardiovascular diseases (primary prevention). As of 2010, four new statins are available to patients, including fluvastatin, lovastatin, pitavastatin and pravastatin, in addition to the aforementioned three statins.

The clinical benefits of statins are attributable mainly to their ability to reduce plasma levels of LDL cholesterol that is a key player driving the lipid component of atherogenesis, and that has pleiotropic effects on the pathogenesis of atherosclerosis. However, years of clinical trials and lipid clinics have shown that not all patients respond

equally or well to statin treatments, with respect to both their efficacy and adverse effects. This heterogeneity of response has prompted extensive investigation of factors that can modulate such interindividual differences, including molecular, genetic, pathological, immunological and pharmacogenomic factors. Furthermore, it is strongly desired that new lipid-lowering drugs are developed for high-risk patients.

Currently, four new classes of lipid-lowering agents are being developed through clinical trials, including:

- The proprotein convertase subtilisin/kexin type 9 (PCSK9) inhibitors, mainly monoclonal antibodies;
- The microsomal triglyceride transfer protein inhibitor such as lomitapide;
- The apoB antisense RNA agent, i.e., mipomersen; and
- The cholesterol ester transfer protein (CETP) inhibitors such as anacetrapib, evacetrapib, dalcetrapib and torcetrapib.

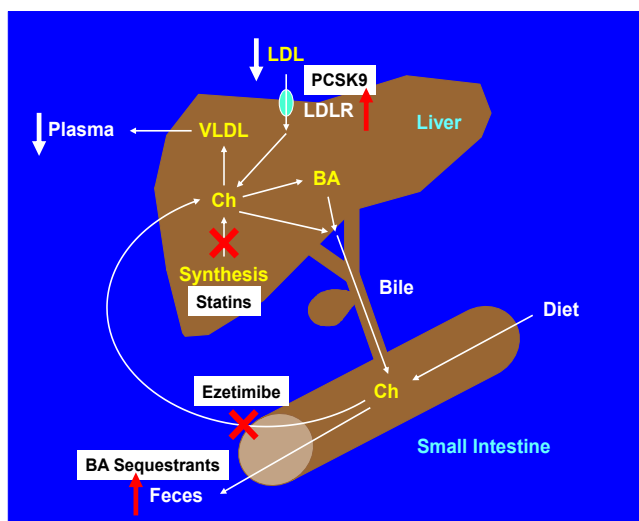
Interestingly, the development of these four new classes of agents is based on human genetic research because some rare human genetic disorders provide a crucial clue that the dysfunctional protein molecules encoded by the genes could work as the drug targets that are associated with a favorable lipid profile. As a result, the genes that encode these target proteins could serve as interesting candidates for pharmacogenomic studies of some compounds.

For example, the first case of familial CETP deficiency in Japan was reported by Inazu, *et al.* in the early 1990s.<sup>125</sup> These patients have very high plasma HDL cholesterol concentrations and normal or low plasma LDL

cholesterol levels, as well as they often display enhanced longevity and do not suffer from CHD. Based on these clinical observations, a new hypothesis was proposed that HDL and apoA-I may have the ability to enhance reverse cholesterol transport by promoting efflux of cholesterol from macrophages in the artery wall, inhibit vascular inflammation, and improve endothelial functions. Thus, elevating HDL and apoA-I levels has been studied as therapeutic targets for CHD. However, recent clinical trials with drugs that raise HDL cholesterol concentrations, such as CETP inhibitors and niacin, have failed to support this hypothesis.<sup>97</sup> Therefore, HDL as a therapeutic target should be re-evaluated. Moreover, some studies find that CETP deficiency results in increased levels of dysfunctional large HDL particles that lead to premature CHD.<sup>126,127</sup> Of note, the HDL from patients with homozygous CETP deficiency are substantially larger than normal, and these HDL particles are enriched with apoA-I, apoA-II and apoE, in contrast to very large  $\alpha$ -1 HDL from normal individuals who contain apoA-I, but not apoA-II or apoE.<sup>128</sup> Several *in vitro* experiments show that the HDL particles from patients with homozygous CETP deficiency are effective as normal HDL particles do in serving as an acceptor of both ABCA1-mediated cellular cholesterol efflux from J774 macrophages or SR-BI-mediated cholesterol efflux from Fu5AH hepatoma cells.<sup>129</sup> Taken together, further studies are strongly needed to understand the physiology and genetic regulation underlying the major atheroprotective functions of HDL on promoting cholesterol efflux and reverse cholesterol transport.

Of note is that based on genetic studies of patients with the dysfunctional protein molecules encoded by the genes, some drugs are successfully developed. Such an example is the PCSK9 inhibitors that are a class of injectable drugs approved by FDA in 2015 because they dramatically reduce plasma LDL cholesterol concentrations by 60% when combined with a statin. The PCSK9 inhibitors are monoclonal antibodies, a type of biologic drug, which bind to and inactivate PCSK9 protein in the liver. By inactivating PCSK9 via inhibition, more LDL receptors are available to capture LDL for removal from the circulation, thereby reducing plasma LDL cholesterol concentrations.

Clinical studies have found that statins are not able to completely lower plasma cholesterol levels in approximately one fifth of patients, probably because of serious genetic defects. In addition, some patients stop their statin treatment due to severe side effects. The PCSK9 inhibitors may be used alone or in combination with statins to further reduce refractory high LDL cholesterol levels in patients who cannot tolerate any statins due to severe side effects.



**Figure 7.** The diagram shows the target organs and the regulatory mechanisms of major cholesterol-lowering drugs.

## FUTURE DIRECTIONS

Although accumulated evidence has clearly demonstrated that statins reduce the development of CHD and stroke, other lipid-lowering therapies are often used adjunctively when statin therapy is inadequate or as an alternative for patients who are intolerant of statins. More recently, intensive lipid and pharmaceutical studies lead to considerable development of new agents that have novel targets in the metabolic pathways of lipoproteins and that have the potential to serve as new alternative or adjunctive agents to existing drugs such as statins. Because of their early stages of drug development, and the limited numbers of patients studied and the limited duration of clinical trials, there are few pharmacogenomic data for these compounds so far. Studies in patients receiving these new classes of lipid-lowering agents, especially in individuals with monogenic disorders of lipid and/or lipoprotein metabolism, will certainly provide a great opportunity to find that genotype predicts response to lipid-lowering therapy and thus guides the choice of drug and dose for high-risk patients, and especially, for patients with the hardest-to-treat elevated cholesterol concentrations due to intolerance to any statins and severe drug side effects.

In the future, the personalized medicine will need to be developed for the prevention and the treatment of cardiovascular disease that is highly prevalent worldwide. The ideal application of lipid-lowering drugs would be to identify patients at risk for either a suboptimal response with respect to efficacy, or a marked adverse response to either a drug class or a specific drug. As a result, individuals who would be predicted to have an unfavorable benefit-to-risk ratio can be identified and might be obtained from alternative methods more expeditiously and without the trial-and-error process that typically accompanies initiation and maintenance of such commonly used treatment.

Although the pharmacogenomics of lipid-lowering drugs have advanced considerably and a few consistent trends on the therapy of cardiovascular disease have emerged, mainly relating to the genetic determinants of response to statins, many new molecular, genetic and biochemical studies on lipid and lipoprotein metabolism are being extensively explored. First, it is more interesting to investigate the mechanisms of elucidating how cholesterol is excreted from the body at a molecular level. Second, the potential molecular and genetic mechanisms underlying the removal of cholesterol from the body through the biliary pathway (i.e., the classic reverse cholesterol transport) and the non-biliary routes (i.e., the TICE) are desired to be revealed. Third, it is important to understand why the genetic determinants of pharmacokinetics are more relevant than genetic determinants of pharmacodynamics in

determining interindividual variation in both efficacy and adverse effects of statins and other lipid-lowering drugs. Progress in our understanding of lipid, HDL, LDL and VLDL metabolism, as well as the biliary and the non-biliary pathways for removal of cholesterol from the body will greatly increase the likelihood of finding new lipid-lowering therapies and proving that they are more effective in the prevention and therapeutic intervention of cardiovascular disease that is the main cause of human death worldwide.

## ABBREVIATIONS

- **ABC:** ATP-binding cassette (transporter).
- **Apo:** apolipoprotein.
- **CETP:** cholesteryl ester transfer protein.
- **CHD:** coronary heart disease.
- **HDL:** high-density lipoprotein.
- **HMG-CoA:** 3-hydroxy-3-methylglutaryl CoA (reductase).
- **LCAT:** lecithin:cholesterol acyltransferase.
- **LDL:** low-density lipoprotein; NPC1L1, Niemann-Pick C1 like 1 (protein).
- **PCSK9:** proprotein convertase subtilisin/kexin type 9.
- **SR-BI:** scavenger receptor class B type I.
- **TICE:** transintestinal cholesterol excretion.
- **VLDL:** very-low-density lipoprotein.

## POTENTIAL CONFLICT OF INTEREST

Nothing to report.

## ACKNOWLEDGMENTS

This work was supported in part by research grants DK106249, DK041296 and AA103557 (to DQ-HW), DK92779, and DK95440 (to M.L.), all from the National Institutes of Health (US Public Health Service).

## REFERENCES

1. Lusis AJ. Atherosclerosis. *Nature* 2000; 407: 233-41.
2. Emerging Risk Factors C, Di Angelantonio E, Sarwar N, Perry P, Kaptoge S, Ray KK, Thompson A, et al. Major lipids, apolipoproteins, and risk of vascular disease. *JAMA* 2009; 302: 1993-2000.
3. Cholesterol Treatment Trialists C, Baigent C, Blackwell L, Emberson J, Holland LE, Reith C, Bhala N, et al. Efficacy and safety of more intensive lowering of LDL cholesterol: a meta-analysis of data from 170,000 participants in 26 randomised trials. *Lancet* 2010; 376: 1670-81.
4. Grundy SM, Cleeman JI, Merz CN, Brewer HBJr, Clark LT, Hunninghake DB, Pasternak RC, et al. Implications of recent clinical trials for the National Cholesterol Education Program Adult Treatment Panel III Guidelines. *J Am Coll Cardiol* 2004; 44: 720-32.



5. Smith SC Jr, Allen J, Blair SN, Bonow RO, Brass LM, Fonarow GC, Grundy SM, et al. AHA/ACC guidelines for secondary prevention for patients with coronary and other atherosclerotic vascular disease: 2006 update: endorsed by the National Heart, Lung, and Blood Institute. *Circulation* 2006; 113: 2363-72.
6. Grundy SM, Cleeman JI, Merz CN, Brewer HBJr, Clark LT, Hunninghake DB, Pasternak RC, et al. Implications of recent clinical trials for the National Cholesterol Education Program Adult Treatment Panel III guidelines. *Circulation* 2004; 110: 227-39.
7. Barter PJ, Brewer HBJr, Chapman MJ, Hennekens CH, Rader DJ, Tall AR. Cholesteryl ester transfer protein: a novel target for raising HDL and inhibiting atherosclerosis. *Arterioscler Thromb Vasc Biol* 2003; 23: 160-7.
8. Wang DQ. Regulation of intestinal cholesterol absorption. *Annu Rev Physiol* 2007; 69: 221-48.
9. Panel TNCEPE. Executive Summary of The Third Report of The National Cholesterol Education Program (NCEP) Expert Panel on Detection, Evaluation, And Treatment of High Blood Cholesterol In Adults (Adult Treatment Panel III). *JAMA* 2001; 285: 2486-97.
10. Greenland P, Alpert JS, Beller GA, Benjamin EJ, Budoff MJ, Fayad ZA, Foster E, et al. 2010 ACCF/AHA guideline for assessment of cardiovascular risk in asymptomatic adults: a report of the American College of Cardiology Foundation/American Heart Association Task Force on Practice Guidelines. *J Am Coll Cardiol* 2010; 56: e50-103.
11. Martin SS, Metkus TS, Horne A, Blaha MJ, Hasan R, Campbell CY, Yousuf O, et al. Waiting for the National Cholesterol Education Program Adult Treatment Panel IV Guidelines, and in the meantime, some challenges and recommendations. *Am J Cardiol* 2012; 110: 307-13.
12. Kannel WB, Dawber TR, Friedman GD, Glennon WE, McNamara PM. Risk Factors in Coronary Heart Disease. An Evaluation of Several Serum Lipids as Predictors of Coronary Heart Disease; the Framingham Study. *Ann Intern Med* 1964; 61: 888-99.
13. Badimon JJ, Badimon L, Fuster V. Regression of atherosclerotic lesions by high density lipoprotein plasma fraction in the cholesterol-fed rabbit. *J Clin Invest* 1990; 85: 1234-41.
14. Andersen JM, Dietschy JM. Regulation of sterol synthesis in 16 tissues of rat. I. Effect of diurnal light cycling, fasting, stress, manipulation of enterohepatic circulation, and administration of chylomicrons and triton. *J Biol Chem* 1977; 252: 3646-51.
15. Andersen JM, Dietschy JM. Regulation of sterol synthesis in 15 tissues of rat. II. Role of rat and human high and low density plasma lipoproteins and of rat chylomicron remnants. *J Biol Chem* 1977; 252: 3652-9.
16. Dietschy JM. Regulation of cholesterol metabolism in man and in other species. *Klin Wochenschr* 1984; 62: 338-45.
17. Spady DK, Dietschy JM. Rates of cholesterol synthesis and low-density lipoprotein uptake in the adrenal glands of the rat, hamster and rabbit in vivo. *Biochim Biophys Acta* 1985; 836: 167-75.
18. Turley SD, Dietschy JM. The metabolism and excretion of cholesterol by the liver. In: Arias IM, Jakoby WB, Popper HD-SASD (eds.). *The Liver: Biology and Pathobiology*. 2nd Ed. New York: Raven Press; 1988, p. 617-41.
19. Cohen DE. Lipoprotein Metabolism and Cholesterol Balance. In: Arias IM, Alter HJ, Boyer JL, Cohen DE, Fausto N, Shafritz DA, Wolkoff AW (eds.). *The Liver: Biology and Pathobiology*. 5th Ed. West Sussex: Wiley-Blackwell; 2009, p. 271-85.
20. Dietschy JM, Turley SD. Control of cholesterol turnover in the mouse. *J Biol Chem* 2002; 277: 3801-4.
21. Spady DK, Turley SD, Dietschy JM. Rates of low density lipoprotein uptake and cholesterol synthesis are regulated independently in the liver. *J Lipid Res* 1985; 26: 465-72.
22. Spady DK, Turley SD, Dietschy JM. Receptor-independent low density lipoprotein transport in the rat in vivo. Quantitation, characterization, and metabolic consequences. *J Clin Invest* 1985; 76: 1113-22.
23. Turley SD, Dietschy JM. Sterol absorption by the small intestine. *Curr Opin Lipidol* 2003; 14: 233-40.
24. Wang DQ, Cohen DE. Absorption and Excretion of Cholesterol and Other Sterols. In: Ballantyne CM (ed.). *Lipidology in the Treatment and Prevention of Cardiovascular Disease (Clinical Lipidology: A Companion to Braunwald's Heart Disease)*. 1st Ed. Philadelphia: Elsevier Saunders; 2008, p. 26-44.
25. Tso P, Fujimoto K. The absorption and transport of lipids by the small intestine. *Brain Res Bull* 1991; 27: 477-82.
26. Wang DQ, Lee SP. Physical chemistry of intestinal absorption of biliary cholesterol in mice. *Hepatology* 2008; 48: 177-85.
27. Wang DQ, Paigen B, Carey MC. Genetic factors at the enterocyte level account for variations in intestinal cholesterol absorption efficiency among inbred strains of mice. *J Lipid Res* 2001; 42: 1820-30.
28. Bhattacharyya AK, Eggen DA. Relationships between dietary cholesterol, cholesterol absorption, cholesterol synthesis, and plasma cholesterol in rhesus monkeys. *Atherosclerosis* 1987; 67: 33-9.
29. Trautwein EA, Forgbert K, Rieckhoff D, Erbersdobler HF. Impact of beta-cyclodextrin and resistant starch on bile acid metabolism and fecal steroid excretion in regard to their hypolipidemic action in hamsters. *Biochim Biophys Acta* 1999; 1437: 1-12.
30. Turley SD, Daggy BP, Dietschy JM. Effect of feeding psyllium and cholestyramine in combination on low density lipoprotein metabolism and fecal bile acid excretion in hamsters with dietary-induced hypercholesterolemia. *J Cardiovasc Pharmacol* 1996; 27: 71-9.
31. Turley SD, Daggy BP, Dietschy JM. Cholesterol-lowering action of psyllium mucilloid in the hamster: sites and possible mechanisms of action. *Metabolism* 1991; 40: 1063-73.
32. Altmann SW, Davis HR Jr, Zhu LJ, Yao X, Hoos LM, Tetzloff G, Iyer SP, et al. Niemann-Pick C1 Like 1 protein is critical for intestinal cholesterol absorption. *Science* 2004; 303: 1201-4.
33. Davis HR Jr, Altmann SW. Niemann-Pick C1 Like 1 (NPC1L1) an intestinal sterol transporter. *Biochim Biophys Acta* 2009; 1791: 679-83.
34. Davis HR Jr, Basso F, Hoos LM, Tetzloff G, Lally SM, Altmann SW. Cholesterol homeostasis by the intestine: lessons from Niemann-Pick C1 Like 1 [NPC1L1]. *Atheroscler Suppl* 2008; 9: 77-81.
35. Davis HR Jr, Zhu LJ, Hoos LM, Tetzloff G, Maguire M, Liu J, Yao X, et al. Niemann-Pick C1 Like 1 (NPC1L1) is the intestinal phytosterol and cholesterol transporter and a key modulator of whole-body cholesterol homeostasis. *J Biol Chem* 2004; 279: 33586-92.
36. Garcia-Calvo M, Lisnock J, Bull HG, Hawes BE, Burnett DA, Braun MP, Crona JH, et al. The target of ezetimibe is Niemann-Pick C1-Like 1 (NPC1L1). *Proc Natl Acad Sci USA* 2005; 102: 8132-7.
37. Berge KE, Tian H, Graf GA, Yu L, Grishin NV, Schultz J, Kwiterovich P, et al. Accumulation of dietary cholesterol in sitosterolemia caused by mutations in adjacent ABC transporters. *Science* 2000; 290: 1771-5.
38. Berge KE, von Bergmann K, Lutjohann D, Guerra R, Grundy SM, Hobbs HH, Cohen JC. Heritability of plasma noncholes-



- terol sterols and relationship to DNA sequence polymorphism in ABCG5 and ABCG8. *J Lipid Res* 2002; 43: 486-94.
39. Graf GA, Cohen JC, Hobbs HH. Missense mutations in ABCG5 and ABCG8 disrupt heterodimerization and trafficking. *J Biol Chem* 2004; 279: 24881-8.
  40. Graf GA, Li WP, Gerard RD, Gelissen I, White A, Cohen JC, Hobbs HH. Coexpression of ATP-binding cassette proteins ABCG5 and ABCG8 permits their transport to the apical surface. *J Clin Invest* 2002; 110: 659-69.
  41. Graf GA, Yu L, Li WP, Gerard R, Tuma PL, Cohen JC, Hobbs HH. ABCG5 and ABCG8 are obligate heterodimers for protein trafficking and biliary cholesterol excretion. *J Biol Chem* 2003; 278: 48275-82.
  42. Hubacek JA, Berge KE, Cohen JC, Hobbs HH. Mutations in ATP-cassette binding proteins G5 (ABCG5) and G8 (ABCG8) causing sitosterolemia. *Hum Mutat* 2001; 18: 359-60.
  43. Yu L, Li-Hawkins J, Hammer RE, Berge KE, Horton JD, Cohen JC, Hobbs HH. Overexpression of ABCG5 and ABCG8 promotes biliary cholesterol secretion and reduces fractional absorption of dietary cholesterol. *J Clin Invest* 2002; 110: 671-80.
  44. Lee MH, Lu K, Hazard S, Yu H, Shulenin S, Hidaka H, Kojima H, et al. Identification of a gene, ABCG5, important in the regulation of dietary cholesterol absorption. *Nat Genet* 2001; 27: 79-83.
  45. Wang HH, Patel SB, Carey MC, Wang DQ. Quantifying anomalous intestinal sterol uptake, lymphatic transport, and biliary secretion in *Abcg8(-/-)* mice. *Hepatology* 2007; 45: 998-1006.
  46. Duan LP, Wang HH, Ohashi A, Wang DQ. Role of intestinal sterol transporters *Abcg5*, *Abcg8*, and *Npc111* in cholesterol absorption in mice: gender and age effects. *Am J Physiol* 2006; 290: G269-76.
  47. Duan LP, Wang HH, Wang DQ. Cholesterol absorption is mainly regulated by the jejunal and ileal ATP-binding cassette sterol efflux transporters *Abcg5* and *Abcg8* in mice. *J Lipid Res* 2004; 45: 1312-23.
  48. Lammert F, Wang DQ. New insights into the genetic regulation of intestinal cholesterol absorption. *Gastroenterology* 2005; 129: 718-34.
  49. Brown MS, Brannan PG, Bohmfalk HA, Brunschede GY, Dana SE, Helgeson J, Goldstein JL. Use of mutant fibroblasts in the analysis of the regulation of cholesterol metabolism in human cells. *J Cell Physiol* 1975; 85: 425-36.
  50. Brown MS, Dana SE, Dietschy JM, Siperstein MD. 3-Hydroxy-3-methylglutaryl coenzyme A reductase. Solubilization and purification of a cold-sensitive microsomal enzyme. *J Biol Chem* 1973; 248: 4731-8.
  51. Brown MS, Dana SE, Goldstein JL. Receptor-dependent hydrolysis of cholesteryl esters contained in plasma low density lipoprotein. *Proc Natl Acad Sci USA* 1975; 72: 2925-9.
  52. Brown MS, Dana SE, Goldstein JL. Cholesterol ester formation in cultured human fibroblasts. Stimulation by oxygenated sterols. *J Biol Chem* 1975; 250: 4025-7.
  53. Brown MS, Dana SE, Goldstein JL. Regulation of 3-hydroxy-3-methylglutaryl coenzyme A reductase activity in cultured human fibroblasts. Comparison of cells from a normal subject and from a patient with homozygous familial hypercholesterolemia. *J Biol Chem* 1974; 249: 789-96.
  54. Brown MS, Dana SE, Goldstein JL. Regulation of 3-hydroxy-3-methylglutaryl coenzyme A reductase activity in human fibroblasts by lipoproteins. *Proc Natl Acad Sci USA* 1973; 70: 2162-6.
  55. Dietschy JM, Spady DK. Measurement of rates of cholesterol synthesis using tritiated water. *J Lipid Res* 1984; 25: 1469-76.
  56. Dietschy JM, Spady DK. Regulation of low density lipoprotein uptake and degradation in different animals species. *Agents Actions Suppl* 1984; 16: 177-90.
  57. Dietschy JM, Spady DK, Stange EF. Quantitative importance of different organs for cholesterol synthesis and low-density-lipoprotein degradation. *Biochem Soc Trans* 1983; 11: 639-41.
  58. Dietschy JM, Turley SD, Spady DK. Role of liver in the maintenance of cholesterol and low density lipoprotein homeostasis in different animal species, including humans. *J Lipid Res* 1993; 34: 1637-59.
  59. Turley SD, Spady DK, Dietschy JM. Identification of a metabolic difference accounting for the hyper- and hyporesponder phenotypes of cynomolgus monkey. *J Lipid Res* 1997; 38: 1598-611.
  60. Turley SD, Spady DK, Dietschy JM. Regulation of fecal bile acid excretion in male golden Syrian hamsters fed a cereal-based diet with and without added cholesterol. *Hepatology* 1997; 25: 797-803.
  61. Turley SD, Spady DK, Dietschy JM. Role of liver in the synthesis of cholesterol and the clearance of low density lipoproteins in the cynomolgus monkey. *J Lipid Res* 1995; 36: 67-79.
  62. Spady DK, Dietschy JM. Sterol synthesis in vivo in 18 tissues of the squirrel monkey, guinea pig, rabbit, hamster, and rat. *J Lipid Res* 1983; 24: 303-15.
  63. Yu L, Gupta S, Xu F, Liverman AD, Moschetta A, Mangelsdorf DJ, Repa JJ, et al. Expression of ABCG5 and ABCG8 is required for regulation of biliary cholesterol secretion. *J Biol Chem* 2005; 280: 8742-7.
  64. Yu L, Hammer RE, Li-Hawkins J, Von Bergmann K, Lutjohann D, Cohen JC, Hobbs HH. Disruption of *Abcg5* and *Abcg8* in mice reveals their crucial role in biliary cholesterol secretion. *Proc Natl Acad Sci USA* 2002; 99: 16237-42.
  65. Klett EL, Lu K, Kusters A, Vink E, Lee MH, Altenburg M, Shefer S, et al. A mouse model of sitosterolemia: absence of *Abcg8/sterolin-2* results in failure to secrete biliary cholesterol. *BMC Med* 2004; 2: 5.
  66. Kusters A, Frijters RJ, Schaap FG, Vink E, Plosch T, Ottenhoff R, Jirsa M, et al. Relation between hepatic expression of ATP-binding cassette transporters G5 and G8 and biliary cholesterol secretion in mice. *J Hepatol* 2003; 38: 710-16.
  67. Wang HH, Lammert F, Schmitz A, Wang DQ. Transgenic overexpression of *Abcb11* enhances biliary bile salt outputs, but does not affect cholesterol cholelithogenesis in mice. *Eur J Clin Invest* 2010; 40: 541-51.
  68. Admirand WH, Small DM. The physicochemical basis of cholesterol gallstone formation in man. *J Clin Invest* 1968; 47: 1043-52.
  69. Carey MC, Small DM. The physical chemistry of cholesterol solubility in bile. Relationship to gallstone formation and dissolution in man. *J Clin Invest* 1978; 61: 998-1026.
  70. Wang DQ, Carey MC. Characterization of crystallization pathways during cholesterol precipitation from human gallbladder bile: identical pathways to corresponding model biles with three predominating sequences. *J Lipid Res* 1996; 37: 2539-49.
  71. Wang DQ, Cohen DE, Lammert F, Carey MC. No pathophysiological relationship of soluble biliary proteins to cholesterol crystallization in human bile. *J Lipid Res* 1999; 40: 415-25.
  72. Goldstein JL, Brown MS. Lipoprotein receptors, cholesterol metabolism, and atherosclerosis. *Arch Pathol* 1975; 99: 181-4.
  73. Brown MS, Goldstein JL. How LDL receptors influence cholesterol and atherosclerosis. *Sci Am* 1984; 251: 58-66.

74. Brown MS, Goldstein JL. Lipoprotein metabolism in the macrophage: implications for cholesterol deposition in atherosclerosis. *Annu Rev Biochem* 1983; 52: 223-61.
75. Brown MS, Kovanen PT, Goldstein JL. Regulation of plasma cholesterol by lipoprotein receptors. *Science* 1981; 212: 628-35.
76. Small DM. Cellular mechanisms for lipid deposition in atherosclerosis (first of two parts). *N Engl J Med* 1977; 297: 873-7.
77. Small DM. George Lyman Duff memorial lecture. Progression and regression of atherosclerotic lesions. Insights from lipid physical biochemistry. *Arteriosclerosis* 1988; 8: 103-29.
78. Small DM, Shipley GG. Physical-chemical basis of lipid deposition in atherosclerosis. *Science* 1974; 185: 222-9.
79. Goldstein JL, Brown MS. Regulation of low-density lipoprotein receptors: implications for pathogenesis and therapy of hypercholesterolemia and atherosclerosis. *Circulation* 1987; 76: 504-7.
80. Portincasa P, Moschetta A, Di Ciaula A, Pontrelli D, Sasso RC, Wang HH, Wang DQ. Pathophysiology and Cholesterol Gallstone Disease. In: Borzellino G, Cordiano C (eds.). *Biliary Lithiasis: Basic Science, Current Diagnosis and Management*. 1st Ed. Milano: Springer Italia; S.r.l.; 2008, p. 19-49.
81. Portincasa P, Moschetta A, Palasciano G. Cholesterol gallstone disease. *Lancet* 2006; 368: 230-9.
82. Portincasa P, Moschetta A, Palasciano G. From lipid secretion to cholesterol crystallization in bile. Relevance in cholesterol gallstone disease. *Ann Hepatol* 2002; 1: 121-8.
83. Portincasa P, Moschetta A, van Erpecum KJ, Calamita G, Margari A, vanBerge-Henegouwen GP, Palasciano G. Pathways of cholesterol crystallization in model bile and native bile. *Dig Liver Dis* 2003; 3: 118-26.
84. Afdhal NH, Smith BF. Cholesterol crystal nucleation: a decade-long search for the missing link in gallstone pathogenesis. *Hepatology* 1990; 11: 699-702.
85. Holan KR, Holzbach RT, Hermann RE, Cooperman AM, Claffey WJ. Nucleation time: a key factor in the pathogenesis of cholesterol gallstone disease. *Gastroenterology* 1979; 77: 611-17.
86. Holzbach RT. Cholesterol nucleation in bile. *Ital J Gastroenterol* 1995; 27: 101-5.
87. Holzbach RT. Nucleation of cholesterol crystals in native bile. *Hepatology* 1990; 12: 155S-159S; discussion 159S-161S.
88. Holzbach RT. Recent progress in understanding cholesterol crystal nucleation as a precursor to human gallstone formation. *Hepatology* 1986; 6: 1403-6.
89. Holzbach RT. Factors influencing cholesterol nucleation in bile. *Hepatology* 1984; 4: 173S-176S.
90. Holzbach RT, Busch N. Nucleation and growth of cholesterol crystals. Kinetic determinants in supersaturated native bile. *Gastroenterol Clin North Am* 1991; 20: 67-84.
91. Graham DM, Lyon TP, Gofman JW, Jones HB, Yankley A, Simonton J, White S. Blood lipids and human atherosclerosis. II. The influence of heparin upon lipoprotein metabolism. *Circulation* 1951; 4: 666-73.
92. Lindgren FT, Elliott HA, Gofman JW. The ultracentrifugal characterization and isolation of human blood lipids and lipoproteins, with applications to the study of atherosclerosis. *J Phys Colloid Chem* 1951; 55: 80-93.
93. De Lalla OF, Gofman JW. Ultracentrifugal analysis of serum lipoproteins. *Methods Biochem Anal* 1954; 1: 459-78.
94. Gofman JW, Young W, Tandy R. Ischemic heart disease, atherosclerosis, and longevity. *Circulation* 1966; 34: 679-97.
95. Glomset JA, Janssen ET, Kennedy R, Dobbins J. Role of plasma lecithin:cholesterol acyltransferase in the metabolism of high density lipoproteins. *J Lipid Res* 1966; 7: 638-48.
96. Rader DJ. New Therapies for Coronary Artery Disease: Genetics Provides a Blueprint. *Sci Transl Med* 2014; 6: 239ps4.
97. Tuteja S, Rader DJ. High-density lipoproteins in the prevention of cardiovascular disease: changing the paradigm. *Clin Pharmacol Ther* 2014; 96: 48-56.
98. Rader DJ, Hovingh GK. HDL and cardiovascular disease. *Lancet* 2014; 384: 618-25.
99. Rader DJ. Spotlight on HDL biology: new insights in metabolism, function, and translation. *Cardiovasc Res* 2014; 103: 337-40.
100. Rader DJ. Molecular regulation of HDL metabolism and function: implications for novel therapies. *J Clin Invest* 2006; 116: 3090-100.
101. Rosenson RS, Brewer HB Jr, Ansell B, Barter P, Chapman MJ, Heinecke JW, Kontush A, et al. Translation of high-density lipoprotein function into clinical practice: current prospects and future challenges. *Circulation* 2013; 128: 1256-67.
102. Toth PP, Barter PJ, Rosenson RS, Boden WE, Chapman MJ, Cuchel M, D'Agostino RBSr, et al. High-density lipoproteins: a consensus statement from the National Lipid Association. *J Clin Lipidol* 2013; 7: 484-525.
103. Birner-Gruenberger R, Schittmayer M, Holzer M, Marsche G. Understanding high-density lipoprotein function in disease: Recent advances in proteomics unravel the complexity of its composition and biology. *Prog Lipid Res* 2014; 56C: 36-46.
104. Rosenson RS, Brewer HB, Jr., Davidson WS, Fayad ZA, Fuster V, Goldstein J, Hellerstein M, et al. Cholesterol efflux and atheroprotection: advancing the concept of reverse cholesterol transport. *Circulation* 2012; 125: 1905-19.
105. Lewis GF, Rader DJ. New insights into the regulation of HDL metabolism and reverse cholesterol transport. *Circ Res* 2005; 96: 1221-32.
106. Rader DJ, Alexander ET, Weibel GL, Billheimer J, Rothblat GH. The role of reverse cholesterol transport in animals and humans and relationship to atherosclerosis. *J Lipid Res* 2009; 50 (Suppl.): S189-194.
107. Khera AV, Rader DJ. Future therapeutic directions in reverse cholesterol transport. *Curr Atheroscler Rep* 2010; 12: 73-81.
108. Degoma EM, Rader DJ. Novel HDL-directed pharmacotherapeutic strategies. *Nat Rev Cardiol* 2011; 8: 266-77.
109. Sloop CH, Dory L, Roheim PS. Interstitial fluid lipoproteins. *J Lipid Res* 1987; 28: 225-37.
110. Nanjee MN, Cooke CJ, Wong JS, Hamilton RL, Olszewski WL, Miller NE. Composition and ultrastructure of size subclasses of normal human peripheral lymph lipoproteins: quantification of cholesterol uptake by HDL in tissue fluids. *J Lipid Res* 2001; 42: 639-48.
111. Martel C, Li W, Fulp B, Platt AM, Gautier EL, Westerterp M, Bittman R, et al. Lymphatic vasculature mediates macrophage reverse cholesterol transport in mice. *J Clin Invest* 2013; 123: 1571-9.
112. Lim HY, Thiam CH, Yeo KP, Bisoendial R, Hii CS, McGrath KC, Tan KW, et al. Lymphatic vessels are essential for the removal of cholesterol from peripheral tissues by SR-BI-mediated transport of HDL. *Cell Metab* 2013; 17: 671-84.
113. Kahn ML, Rader DJ. Lymphatics as a new active player in reverse cholesterol transport. *Cell Metab* 2013; 17: 627-8.
114. Fernandez-Hernando C. Lymphatic vessels clean up your arteries. *J Clin Invest* 2013; 123: 1417-19.
115. Martel C, Randolph GJ. Atherosclerosis and transit of HDL through the lymphatic vasculature. *Curr Atheroscler Rep* 2013; 15: 354.

116. Stanley MM, Pineda EP, Cheng SH. Serum cholesterol esters and intestinal cholesterol secretion and absorption in obstructive jaundice due to cancer. *N Engl J Med* 1959; 261: 368-73.
117. Kruit JK, Plosch T, Havinga R, Boverhof R, Groot PH, Groen AK, Kuipers F. Increased fecal neutral sterol loss upon liver X receptor activation is independent of biliary sterol secretion in mice. *Gastroenterology* 2005; 128: 147-56.
118. Temel RE, Sawyer JK, Yu L, Lord C, Degirolamo C, McDaniel A, Marshall S, et al. Biliary sterol secretion is not required for macrophage reverse cholesterol transport. *Cell Metab* 2010; 12: 96-102.
119. de Boer JF, Schonewille M, Boesjes M, Wolters H, Bloks VW, Bos T, van Dijk TH, et al. Intestinal Farnesoid X Receptor Controls Transintestinal Cholesterol Excretion in Mice. *Gastroenterology* 2017; 152: 1126-1138 e1126.
120. de Boer JF, Schonewille M, Boesjes M, Wolters H, Bloks VW, Bos T, van Dijk TH, et al. Intestinal Farnesoid X Receptor Controls Transintestinal Cholesterol Excretion in Mice. *Gastroenterology* 2017.
121. de Boer JF, Schonewille M, Dijkers A, Koehorst M, Havinga R, Kuipers F, Tietge UJ, et al. Transintestinal and Biliary Cholesterol Secretion Both Contribute to Macrophage Reverse Cholesterol Transport in Rats-Brief Report. *Arterioscler Thromb Vasc Biol* 2017; 37: 643-6.
122. Le May C, Berger JM, Lespine A, Pillot B, Prieur X, Letessier E, Hussain MM, et al. Transintestinal cholesterol excretion is an active metabolic process modulated by PCSK9 and statin involving ABCB1. *Arterioscler Thromb Vasc Biol* 2013; 33: 1484-93.
123. Jakulj L, van Dijk TH, de Boer JF, Kootte RS, Schonewille M, Paalvast Y, Boer T, et al. Transintestinal Cholesterol Transport Is Active in Mice and Humans and Controls Ezetimibe-Induced Fecal Neutral Sterol Excretion. *Cell Metab* 2016; 24: 783-94.
124. Wang DQ, Portincasa P, Tso P. Transintestinal cholesterol excretion (TICE): A secondary, non-biliary pathway contributing to reverse cholesterol transport. *Hepatology* 2017; 66: 1337-40.
125. Inazu A, Brown ML, Hesler CB, Agellon LB, Koizumi J, Takata K, Maruhama Y, et al. Increased high-density lipoprotein levels caused by a common cholesteryl-ester transfer protein gene mutation. *N Engl J Med* 1990; 323: 1234-8.
126. Hirano K, Yamashita S, Matsuzawa Y. Pros and cons of inhibiting cholesteryl ester transfer protein. *Curr Opin Lipidol* 2000; 11: 589-96.
127. Yamashita S, Hirano K, Sakai N, Matsuzawa Y. Molecular biology and pathophysiological aspects of plasma cholesteryl ester transfer protein. *Biochim Biophys Acta* 2000; 1529: 257-75.
128. Asztalos BF, Horvath KV, Kajinami K, Nartsupha C, Cox CE, Batista M, Schaefer EJ, et al. Apolipoprotein composition of HDL in cholesteryl ester transfer protein deficiency. *J Lipid Res* 2004; 45: 448-55.
129. Miwa K, Inazu A, Kawashiri M, Nohara A, Higashikata T, Kobayashi J, Koizumi J, et al. Cholesterol efflux from J774 macrophages and Fu5AH hepatoma cells to serum is preserved in CETP-deficient patients. *Clin Chim Acta* 2009; 402: 19-24.

**Correspondence and reprint request:**

David Q.-H. Wang, M.D., Ph.D.

Department of Medicine, Division of Gastroenterology and Liver Diseases, Marion Bessin Liver Research Center, Albert Einstein College of Medicine, Bronx, NY 10461, USA.  
Phone: (718) 430-8865, Fax: (718) 430-8568.  
E-mail: david.wang@einstein.yu.edu