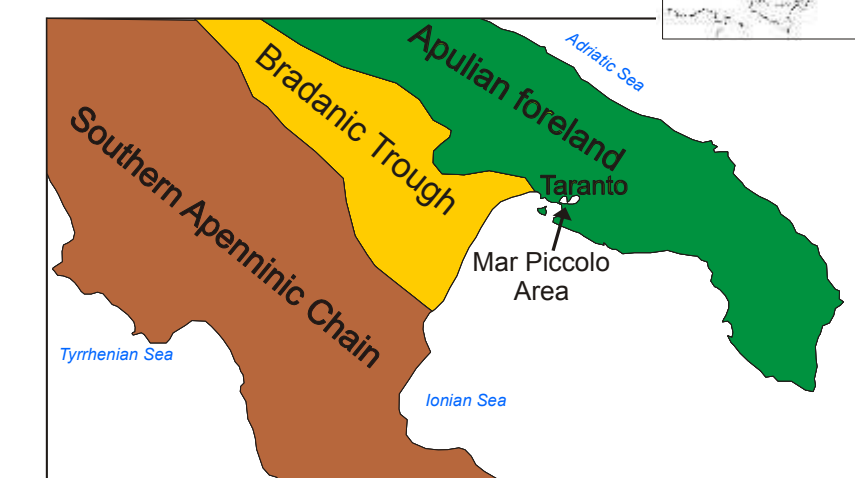


# Geological map of the Mar Piccolo area



Authors: S.N. Lisco (1) ste.lisco@hotmail.it,  
 F. De Giosa (2) ,  
 f.degiosa@coastalexploration.com  
 G. Mastronuzzi (1)  
 giuseppeantonio.mastronuzzi@uniba.it,  
 M. Moretti (1) massimo.moretti@uniba.it,  
 A. Siniscalchi (1) agata.siniscalchi@uniba.it

(1) Dipartimento di Scienze della Terra e Geoambientali - Università di Bari "Aldo Moro"  
 (2) Coastal Consulting & Exploration S.R.L.  
 Geographical position and geodynamical sketch of studied area



### Legend

- h** Anthropogenic deposits (h). Quays and other portual manufacts.
- e1** Mar Piccolo sediments (e1). Very soft grey, black and brown silty clay with scarce bioclastic content. Late Pleistocene-Holocene.
- b** Continental deposits (b). Fluvial and palustrine deposits made up of brownish and yellowish silt. Late Pleistocene-Holocene.
- MTD** Marine terrace deposits (MTD) Burrowed coarse-grained and porous calcarenite and calcirudite with abundant bioclastic content (fragments of lamellibranchs and gastropods). Late Pleistocene.
- ASP** Argille subappennine (ASP). Grey sandy silt and silt interbedded with marl and sand. Fragments of macrofossils are abundant (mainly bryozoans and serpulids), while the microfossil content is given by benthic and planktonic foraminifers. Early Pleistocene
- GRA** Calcarenite di Gravina (GRA). Calcarenite and calcirudite (mainly with a grainstone texture) with lithoclasts, fragments of gastropods, lamellibranchs and echinoids and remains of benthic foraminifers. Late Pliocene-Early Pleistocene.
- ALT** Calcare di Altamura (ALT). Well stratified and laminated white and grey limestone with rudist shells beds. Late Cretaceous.

### Symbols

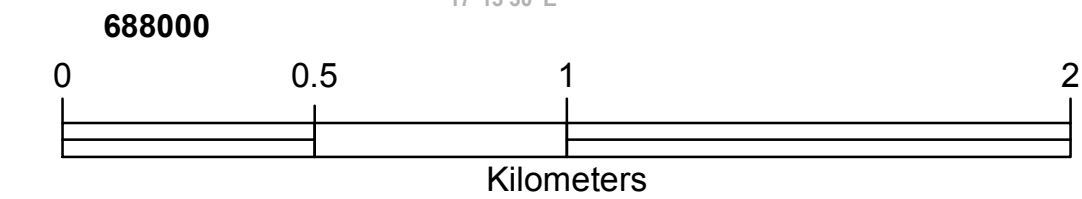
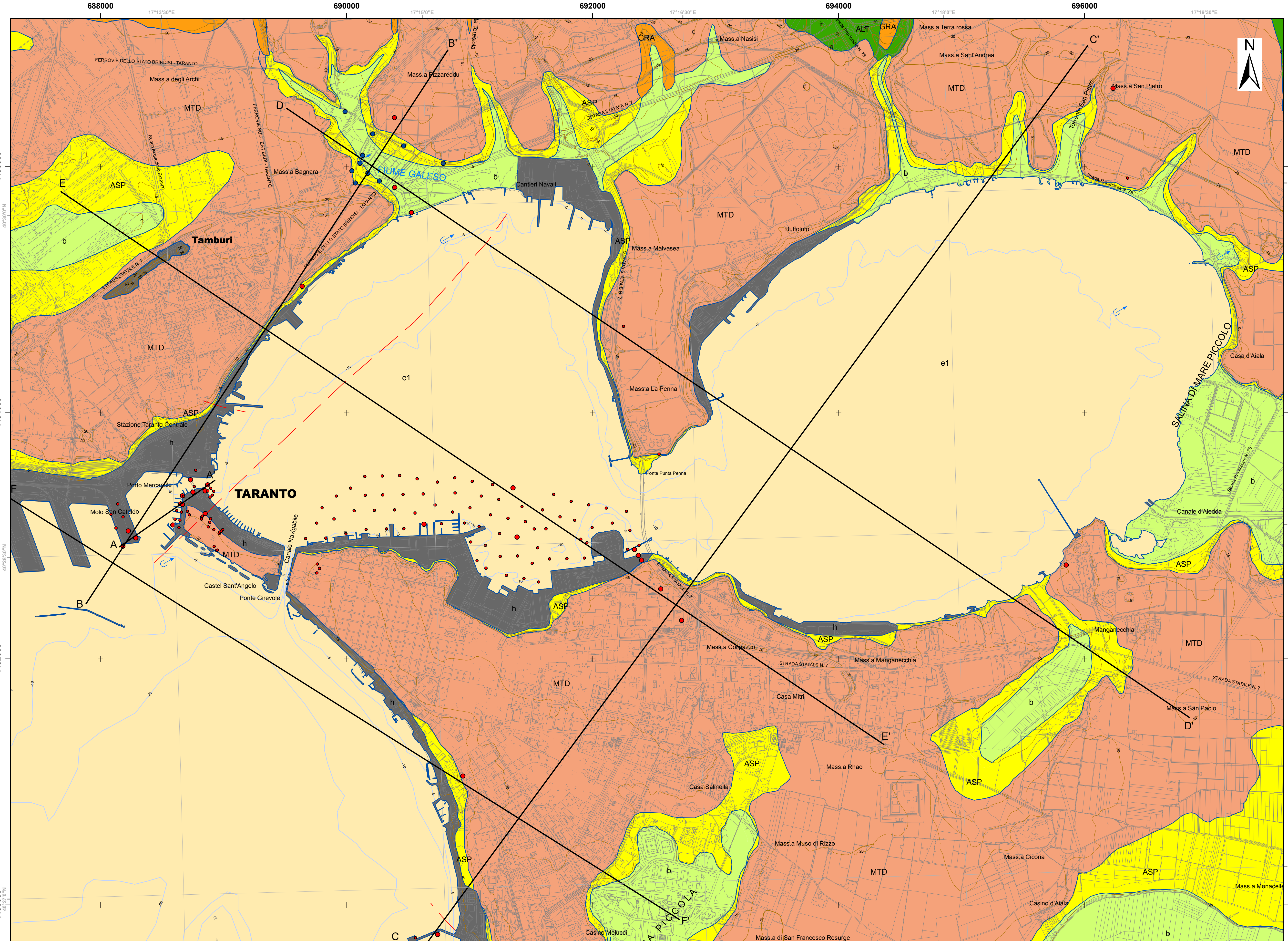
- Faults
- Geological cross-sections
- Stratigraphic contacts
- Contour line
- Bathymetric contour
- Well logs
- Well logs used in the geological cross sections
- Geoelectric prospections
- Karstic springs

Geological maps of a marine area polluted by industrial discharges (Mar Piccolo, Taranto, southern Italy): the physical basis for remediation (Lisco et al. 2015).

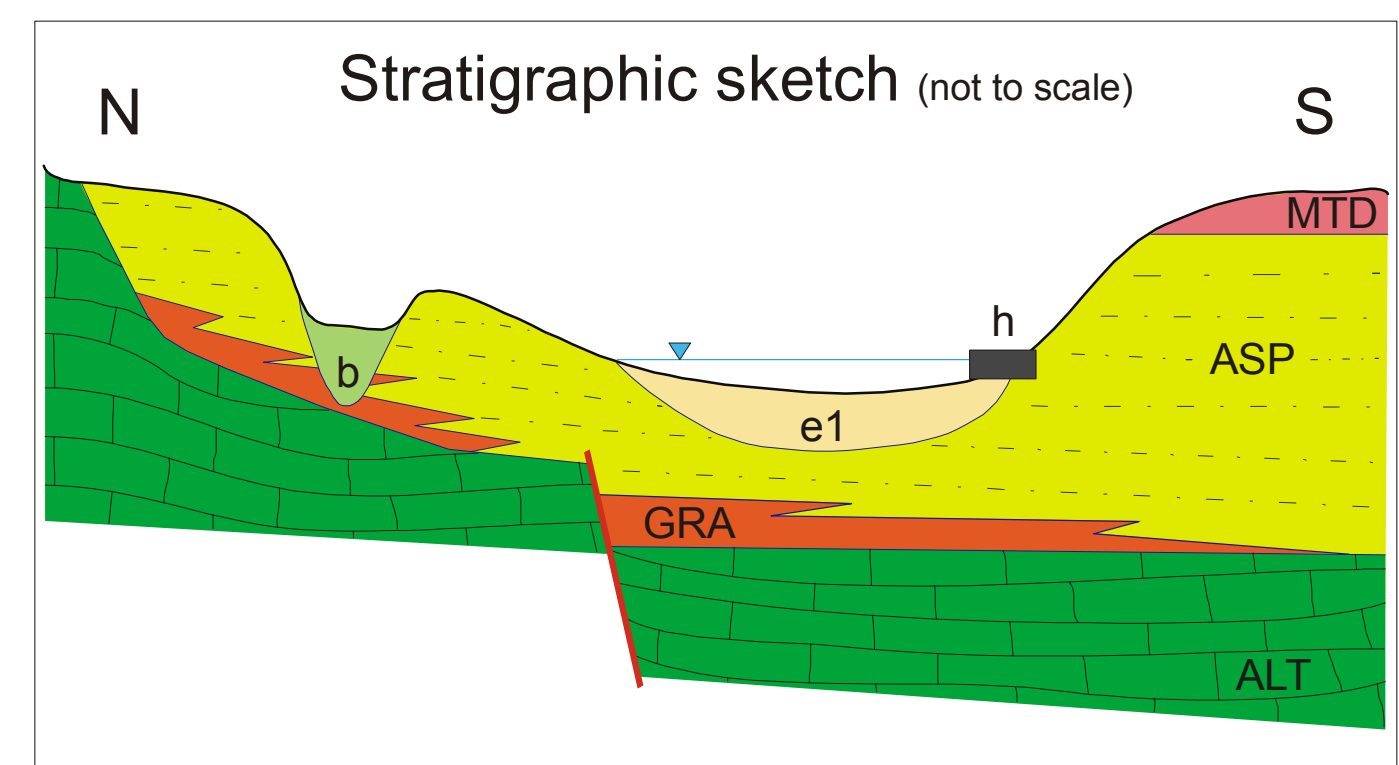
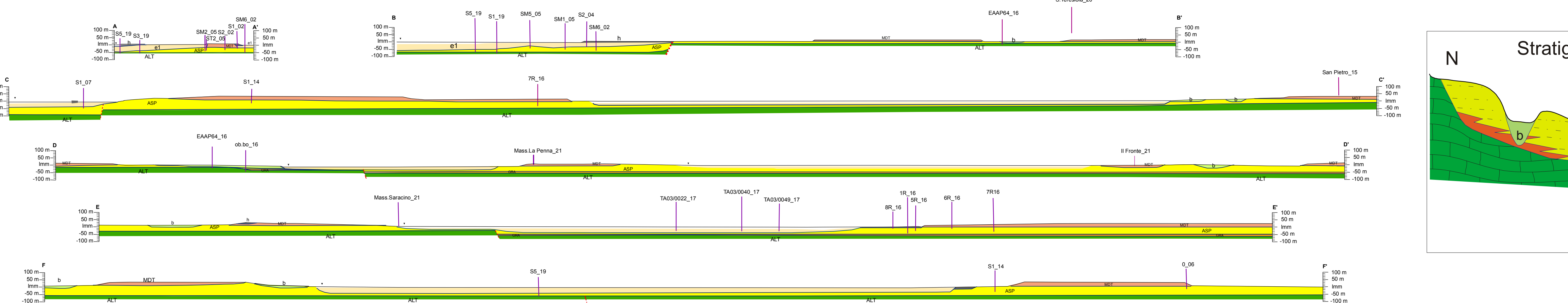
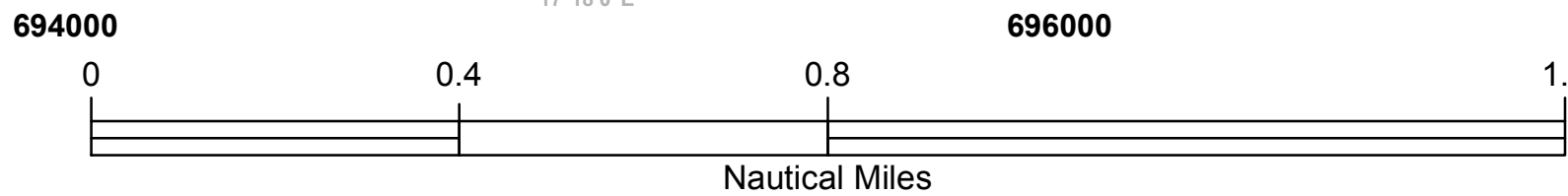
**MAIN MAP 1**

Coordinate System: UTM Zone 33 Northern Hemisphere  
 Projection: Transverse Mercator  
 Datum: WGS84  
 false easting: 500.000.0000  
 false northing: 0.0000  
 central meridian: 15.0000  
 scale factor: 0.9996  
 latitude of origin: 0.0000  
 Units: Meter

PROJECT: ATTIVITA' TECNICHE SCIENTIFICHE MIRATE ALL'APPROFONDIMENTO SULLE INTERAZIONI TRA IL SISTEMA AMBIENTALE DEL MAR PICCOLO DI TARANTO ED I FLUSSI DI CONTAMINANTI DA FONTI PRIMARIE E SECONDARIE finanziarily supported by the Apulian Regional Agency for the Environmental Protection (ARPA PUGLIA)



Scale 1:15,000



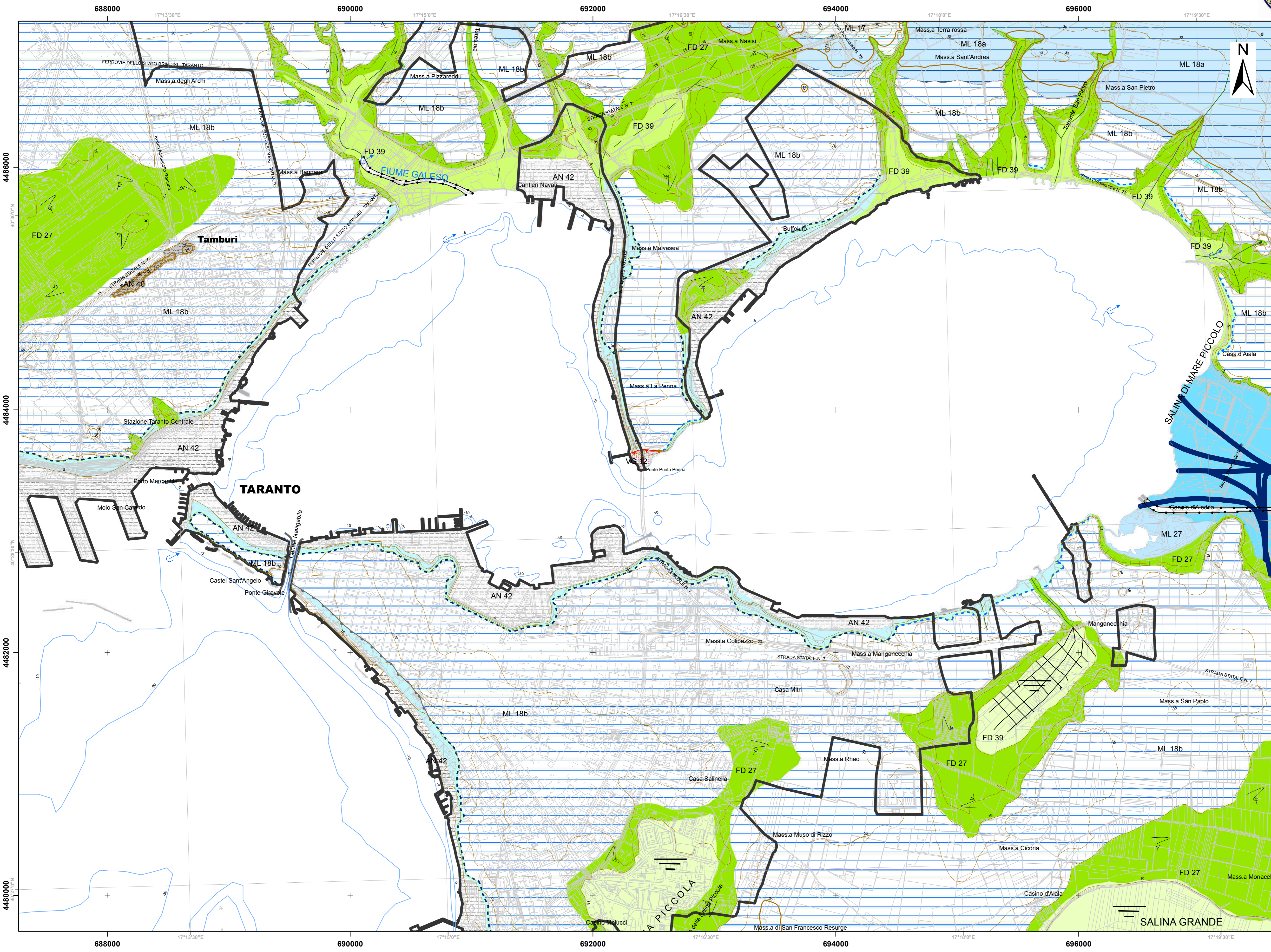
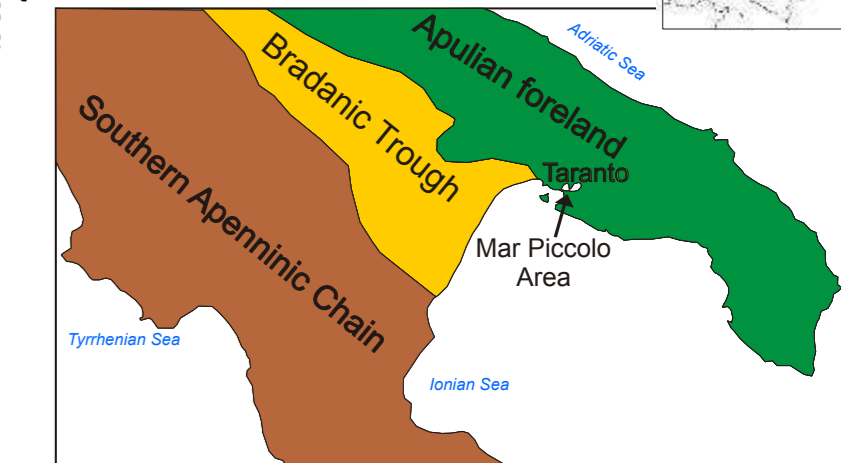
# Geomorphological map of the Mar Piccolo area



Authors: G. Mastronuzzi (1)  
 giuseppeantonio.mastronuzzi@uniba.it,  
 S.N. Lisco (1) ste.lisco@hotmail.it  
 M. Moretti (1), massimo.moretti@uniba.it

(1) Dipartimento di Scienze della Terra e  
 Geoambientali - Università di Bari "Aldo Moro"

Geographical position and  
 geodynamical sketch of studied  
 area



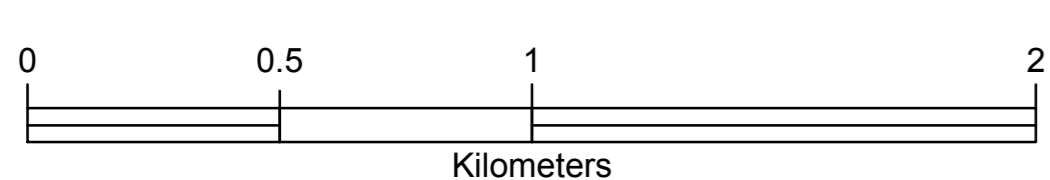
### Legend

ML 18b	Depositional Marine Terrace (MIS 5.e)	ML 15 1a	Cliff
ML 18a	Depositional Marine Terrace (pre MIS 5.e)	ML 15 1b	Inactive cliff
ML 17	Abrasional Marine Terrace	FD 23	Fluvial scarp
FD 27	Marsh	FD 39	Fluvial network
FD 39	Delta	VG 12	Landslide debris
FD 39	Convex Hill Slope	VG 1	Landslide crown
FD 39	Alluvial/coastal plain	AN 1	Urbanised area
FD 39	Wetlands	AN 41	Coastal protection, pier, breakwater
AN 40	Artificial hill	AN 42	Maritime and harbor area
AN 41	Coastal protection, pier, breakwater	AN 38	Artificial talweg
AN 42	Maritime and harbor area	AN 18	Scarp of embankment
AN 38	Artificial talweg	EL 7	Paleo - dune
AN 18	Scarp of embankment	IM 7	Karstic springs
EL 7	Paleo - dune		Contour line
IM 7	Karstic springs		Bathymetric contour
	Contour line		
	Bathymetric contour		

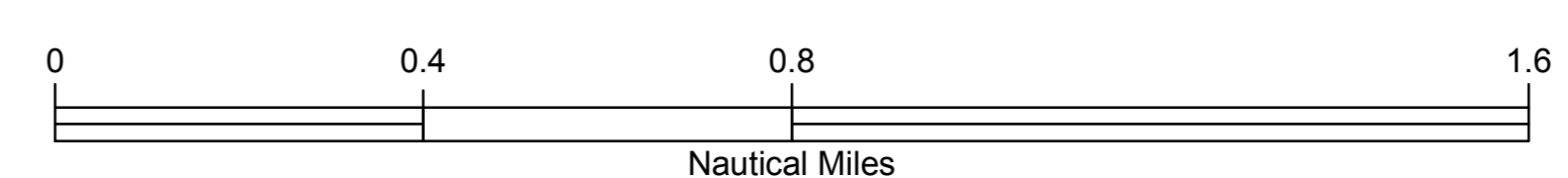
Geological maps of a marine area polluted by industrial discharges (Mar Piccolo, Taranto, southern Italy): the physical basis for remediation (Lisco et al. 2015).

**MAIN MAP 2**  
 Coordinate System: UTM Zone 33 Northern Hemisphere  
 Projection: Transverse Mercator  
 Datum: WGS84  
 false easting: 500,000.0000  
 false northing: 0.0000  
 central meridian: 15.0000  
 scale factor: 0.9996  
 latitude of origin: 0.0000  
 Units: Meter

PROJECT: ATTIVITA' TECNICO SCIENTIFICHE MIRATE ALL'APPROFONDIMENTO SULLE INTERAZIONI TRA IL SISTEMA AMBIENTALE DEL MAR PICCOLO DI TARANTO ED I FLUSSI DI CONTAMINANTI DA FONTI PRIMARIE E SECONDARIE financially supported by the Apulian Regional Agency for the Environmental Protection (ARPA PUGLIA)



Scale 1:15,000

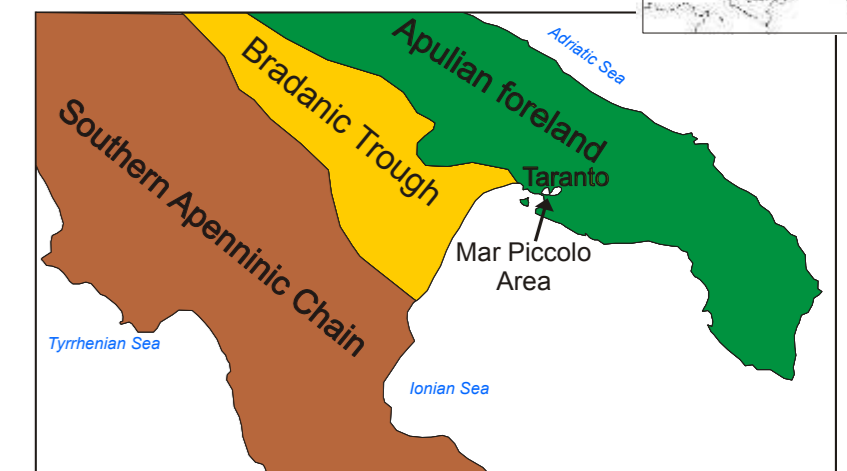


# Bathy-Morphological map of the Mar Piccolo

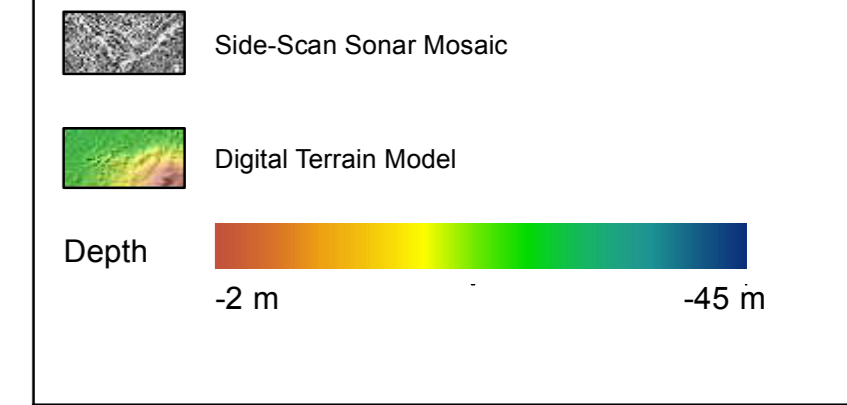
Authors: C. Corselli, cesare.corselli@unimib.it (1),  
 V. A. Bracchi, v.bracchi@campus.unimib.it (1),  
 F. Marchese, f.marchese2@campus.unimib.it (1),  
 C. Tessarolo, chiara.tessarolo@gmail.com (1).

(1) Department of Earth and Environmental Sciences,  
 University of Milano Bicocca

Geographical position and  
 geodynamical sketch of studied  
 area



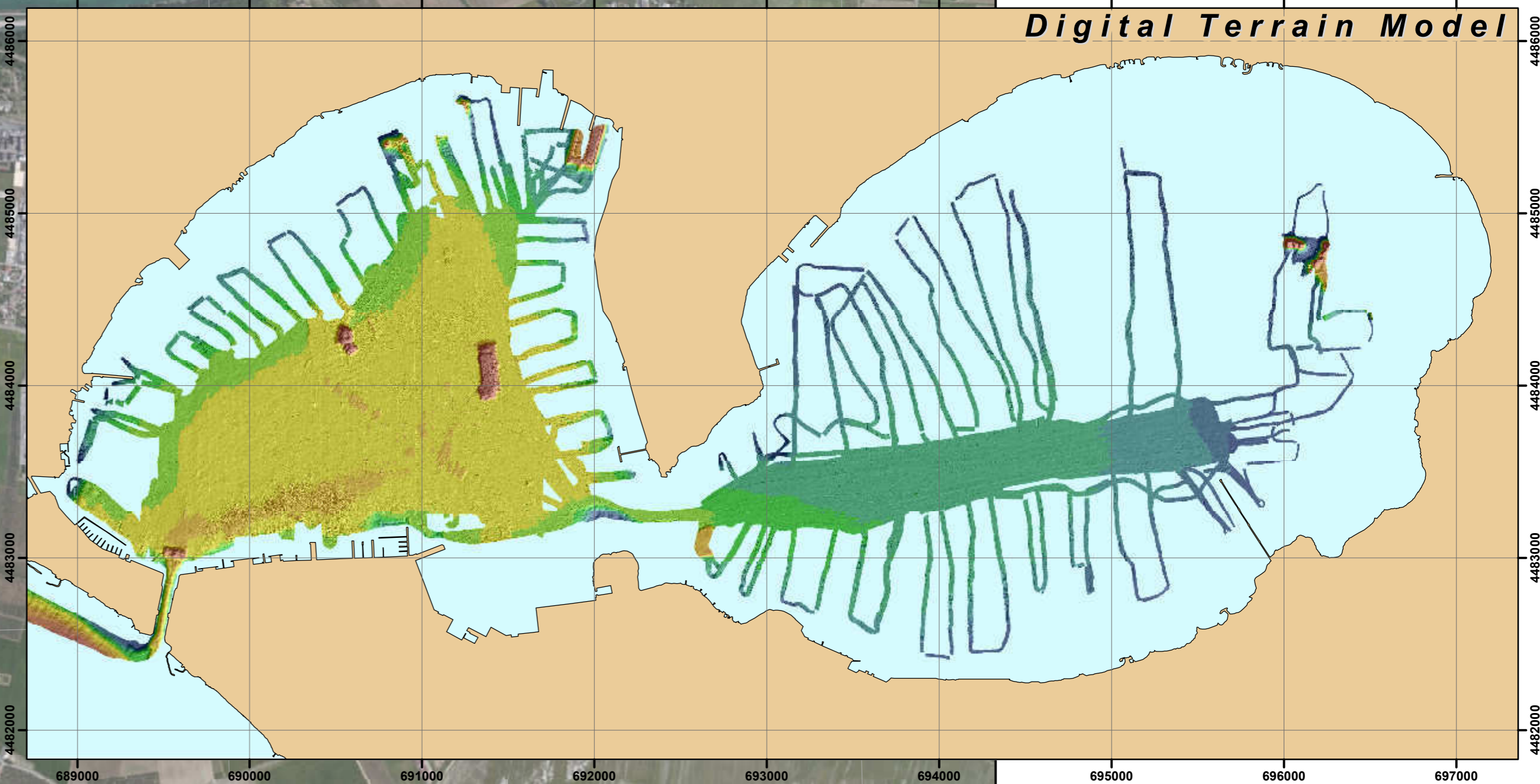
## Legend



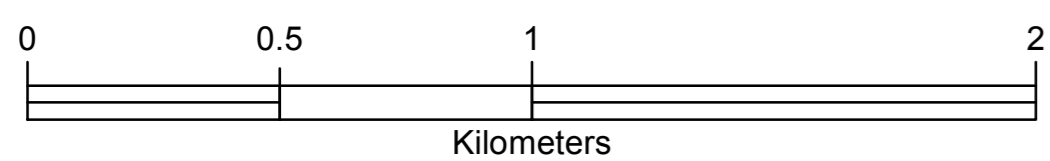
*Geological maps of a marine area polluted by industrial  
 discharges (Mar Piccolo, Taranto, southern Italy): the  
 physical basis for remediation. Lisco et al.*

### MAIN MAP 3

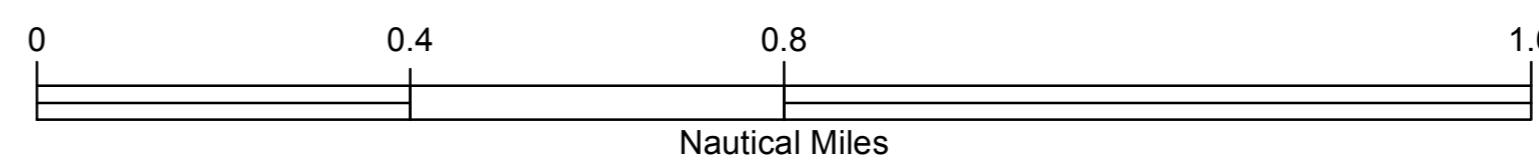
Coordinate System: UTM Zone 33 Northern Hemisphere  
 Projection: Transverse Mercator  
 Datum: WGS84  
 false easting: 500,000.0000  
 false northing: 0.0000  
 central meridian: 15.0000  
 scale factor: 0.9996  
 latitude of origin: 0.0000  
 Units: Meter



Basemap source: Esri, DigitalGlobe, GeoEye, i-cubed, Earthstar Geographics, CNES/Airbus DS,  
 USDA, USGS, AEX, Getmapping, Aerogrid, IGN, IGP, swisstopo, and the GIS User Community



Scale 1:15,000



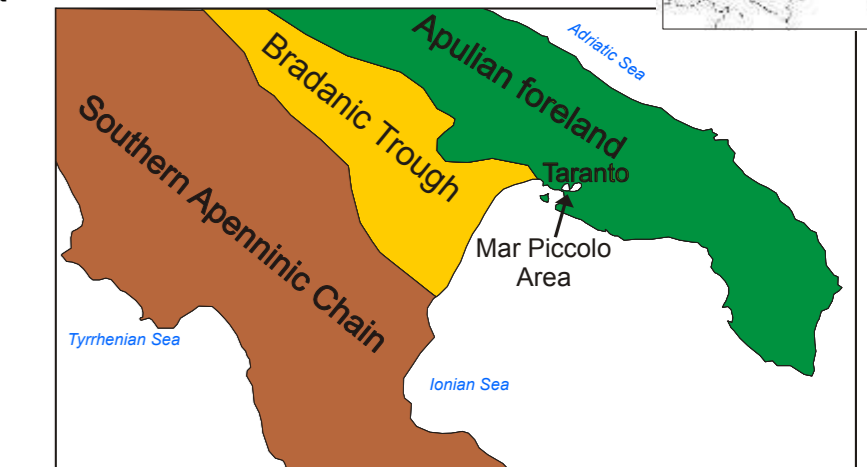
PROJECT:  
 ATTIVITÀ TECNICHE SCIENTIFICHE MIRATE ALL'ACQUISIZIONE E ALL'ANALISI  
 INTERAZIONI TRA IL SISTEMA AMBIENTALE DEL MAR PICCOLO DI TARANTO  
 ED I FLUSSI DI CONTAMINANTI DA FONTI PRIMARIE E SECONDARIE carried  
 out by the Apulian Regional Agency for the Environmental Protection (ARPA  
 PUGLIA) financially supported by National procedures (D.L. 7/8/2012, n.129, and L.  
 4/10/2012).

# Surficial Sediment Thickness Map of the Mar Piccolo

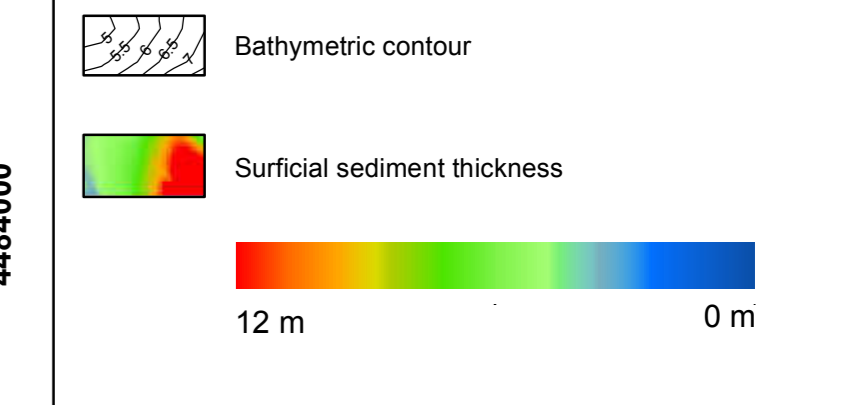
Authors: C. Corselli, cesare.corselli@unimib.it (1),  
 V. A. Bracchi, v.bracchi@campus.unimib.it (1),  
 F. Marchese, f.marchese2@campus.unimib.it (1),  
 C. Tessarolo, chiara.tessarolo@gmail.com (1).

(1) Department of Earth and Environmental Sciences,  
 University of Milano Bicocca

Geographical position and  
 geodynamical sketch of studied  
 area



## Legend

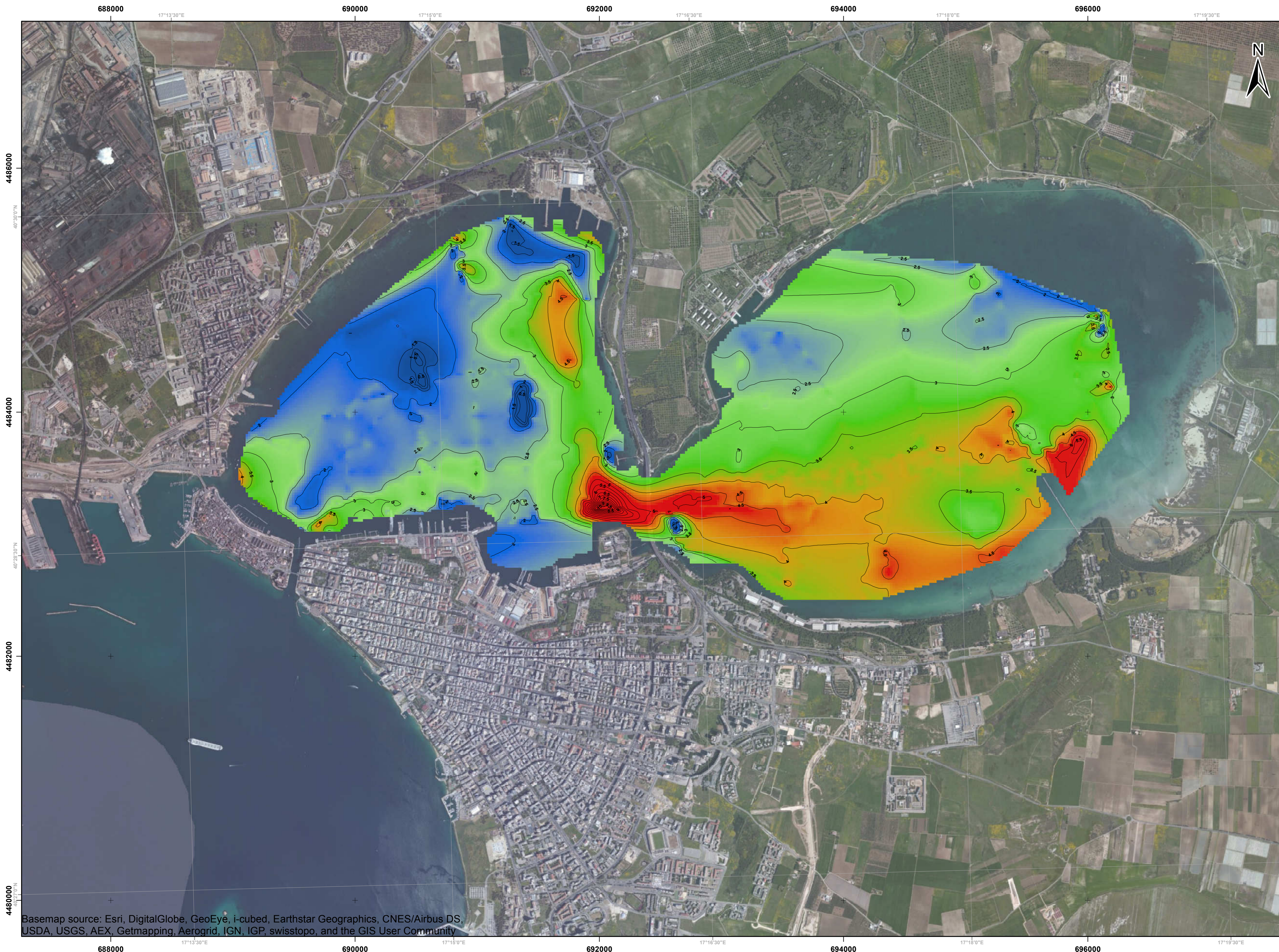


*Geological maps of a marine area polluted by industrial discharges (Mar Piccolo, Taranto, southern Italy): the physical basis for remediation. Lisco et al.*

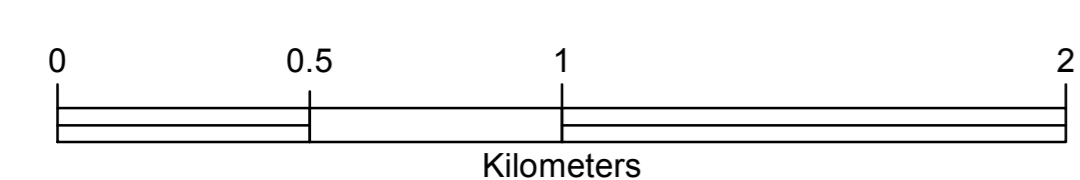
### MAIN MAP 4

Coordinate System: UTM Zone 33 Northern Hemisphere  
 Projection: Transverse Mercator  
 Datum: WGS84  
 false easting: 500,000.0000  
 false northing: 0.0000  
 central meridian: 15.0000  
 scale factor: 0.9996  
 latitude of origin: 0.0000  
 Units: Meter

PROJECT: ATTIVITÀ TECNICHE SCIENTIFICHE MIRATE ALL'APPROFONDIMENTO SULLE INTERAZIONI TRA IL SISTEMA AMBIENTALE DEL MAR PICCOLO DI TARANTO ED I FLUSSI DI CONTAMINANTI DA FONTI PRIMARIE E SECONDARIE carried out by the Apulian Regional Agency for the Environmental Protection (ARPA PUGLIA) financially supported by National procedures (D.L. 7/8/2012, n.129, and L. 4/10/2012).



Basemap source: Esri, DigitalGlobe, GeoEye, i-cubed, Earthstar Geographics, CNES/Airbus DS, USDA, USGS, AEX, Getmapping, Aerogrid, IGN, IGP, swisstopo, and the GIS User Community



Scale 1:15,000

