

ORIGINAL RESEARCH

Cardiac Magnetic Resonance for Prophylactic Implantable-Cardioverter Defibrillator Therapy in Ischemic Cardiomyopathy



The DERIVATE-ICM International Registry

Gianluca Pontone, MD, PhD,^{a,b,*} Andrea Igoen Guaricci, MD, PhD,^{c,*} Laura Fusini, MD,^{a,d} Andrea Baggiano, MD,^{a,e} Marco Guglielmo, MD,^a Giuseppe Muscogiuri, MD, PhD,^a Alessandra Volpe, MD,^a Raffaele Abete, MD,^f Giovanni Aquaro, MD,^g Andrea Barison, MD,^g Jan Bogaert, MD, PhD,^h Giovanni Camastra, MD,ⁱ Samuela Carigi, MD,^j Nazario Carrabba, MD,^k Grazia Casavecchia, MD,^l Stefano Censi, MD,^m Gloria Cicala, MD,ⁿ Carlo N. De Cecco, MD, PhD,^o Manuel De Lazzari, MD,^p Gabriella Di Giovine, MD,^f Mauro Di Roma, MD,^q Monica Dobrovie, MD,^h Marta Focardi, MD, PhD,^r Nicola Gaibazzi, MD, PhD,^s Annalaura Gismondi, MD,^r Matteo Gravina, MD,^t Chiara Lanzillo, MD, PhD,^u Massimo Lombardi, MD, PhD,^v Valentina Lorenzoni, MSc, PhD,^w Jordi Lozano-Torres, MD,^x Chiara Martini, MSc,^{y,z} Francesca Marzo, MD,^j Ambra Masi, MD,^{aa} Riccardo Memeo, MD,^b Claudio Moro, MD,^{bb} Alberto Nese, MD,^{cc} Alessandro Palumbo, MD,ⁿ Anna Giulia Pavon, MD,^{dd} Patrizia Pedrotti, MD,^{aa} Martina Perazzolo Marra, MD,^p Silvia Pica, MD,^{v,t} Silvia Pradella, MD,^{ee} Cristina Presicci, MD,ⁿ Mark G. Rabbat, MD,^{ff,gg} Claudia Raineri, MD,^e José F. Rodriguez-Palomares, MD, PhD,^x Stefano Sbarbati, MD,^{hh} U. Joseph Schoepf, MD,ⁱⁱ Angelo Squeri, MD,^m Nicola Sverzellati, MD, PhD,ⁿ Rolf Symons, MD, PhD,^h Emily Tat, MD,^{ff} Mauro Timpani, MD,^{jj} Giancarlo Todiere, MD,^g Adele Valentini, MD,^{kk} Akos Varga-Szemes, MD, PhD,ⁱⁱ Pier-Giorgio Masci, MD, PhD,^{ll} Juerg Schwitter, MD^{dd,mm}

ABSTRACT

BACKGROUND Implantable cardioverter-defibrillator (ICD) therapy is the most effective prophylactic strategy against sudden cardiac death (SCD) in patients with ischemic cardiomyopathy (ICM) and left ventricle ejection fraction (LVEF) $\leq 35\%$ as detected by transthoracic echocardiography (TTE). This approach has been recently questioned because of the low rate of ICD interventions in patients who received implantation and the not-negligible percentage of patients who experienced SCD despite not fulfilling criteria for implantation.

OBJECTIVES The DERIVATE-ICM registry (Cardiac Magnetic Resonance for Primary Prevention Implantable Cardioverter Defibrillator Therapy; [NCT03352648](#)) is an international, multicenter, and multivendor study to assess the net reclassification improvement (NRI) for the indication of ICD implantation by the use of cardiac magnetic resonance (CMR) as compared to TTE in patients with ICM.

METHODS A total of 861 patients with ICM (mean age 65 ± 11 years, 86% male) with chronic heart failure and TTE-LVEF $< 50\%$ participated. Major adverse arrhythmic cardiac events (MAACE) were the primary endpoints.

RESULTS During a median follow-up of 1,054 days, MAACE occurred in 88 (10.2%). Left ventricular end-diastolic volume index (HR: 1.007 [95% CI: 1.000-1.011]; $P = 0.05$), CMR-LVEF (HR: 0.972 [95% CI: 0.945-0.999]; $P = 0.045$) and late gadolinium enhancement (LGE) mass (HR: 1.010 [95% CI: 1.002-1.018]; $P = 0.015$) were independent predictors of MAACE. A multiparametric CMR weighted predictive derived score identifies subjects at high risk for MAACE compared with TTE-LVEF cutoff of 35% with a NRI of 31.7% ($P = 0.007$).

CONCLUSIONS The DERIVATE-ICM registry is a large multicenter registry showing the additional value of CMR to stratify the risk for MAACE in a large cohort of patients with ICM compared with standard of care.

(J Am Coll Cardiol Img 2023;16:1387-1400) © 2023 by the American College of Cardiology Foundation.

ABBREVIATIONS AND ACRONYMS

CMR = cardiac magnetic resonance

ICD = implantable cardioverter-defibrillator

ICM = ischemic cardiomyopathy

LGE = late gadolinium enhancement

LVEF = left ventricular ejection fraction

MAACE = major arrhythmic adverse cardiac events

NICM = nonischemic cardiomyopathy

NRI = net reclassification index

RV = right ventricle

RVEF = right ventricular ejection fraction

SCD = sudden cardiac death

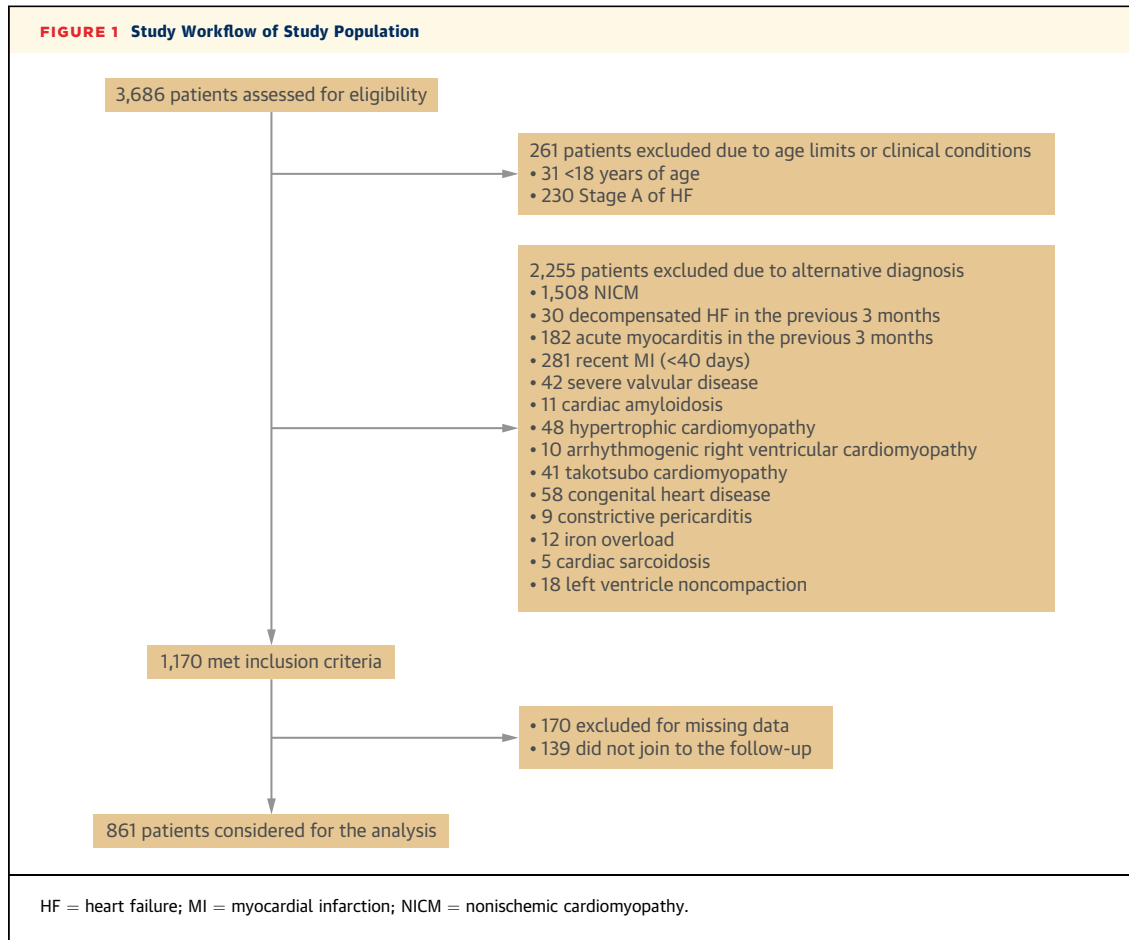
TTE = transthoracic echocardiography

Sudden cardiac death (SCD) is the most common event in patients with ischemic cardiomyopathy (ICM) and nonischemic dilated cardiomyopathy (NICM), averaging 300,000 deaths in the United States annually.¹ Implantable cardioverter-defibrillator (ICD) therapy was demonstrated to be the most effective prophylactic strategy adopted for primary and secondary prevention of SCD in these patients.^{2,3} Yearly, 130,000 patients undergo ICD placement in the United States, although only 5% of those undergoing primary prevention ICD placement receive appropriate device intervention, and up to one-fourth experience inappropriate shocks.⁴ To date, the standard-of-care evaluation for primary prevention ICD therapy is based on left ventricular ejection fraction (LVEF) $\leq 35\%$ and NYHA functional class II or III for both NICM and ICM.⁵⁻⁸ Although easily applicable in a routine work-up, this strategy holds 2

major limitations. First, only a relatively small proportion of patients receiving ICD for primary prevention of SCD events benefits from this treatment, while still incurring a substantial risk of short and long-term

device-related complications. This holds true, particularly in patients with NICM in whom ICD therapy has been recently questioned by the DANISH (Defibrillator Implantation in Patients with Nonischemic Systolic Heart Failure) trial results.⁹ Second, SCD events may also occur in patients with normal to moderately depressed LVEF, which is particularly relevant, as it constitutes the most prevalent population of patients exposed to an increased risk of SCD.¹⁰ Therefore, novel prognostic stratification strategies are needed to improve the delivery of ICD therapy to patients who may benefit from it, while withholding device implantation in those at low risk of SCD. Recently, cardiac magnetic resonance (CMR) has emerged as the gold-standard technique for assessment of left ventricular (LV) volume and function with the added benefit of providing tissue characterization in ICM.¹¹ Indeed, it is well known that fibrous tissue in the myocardium can induce re-entry circuits that are the anatomic substrates of life-threatening ventricular arrhythmias.¹² There is rapidly growing evidence from large single-center studies and meta-analyses showing the strong prognostic value of CMR-defined myocardial fibrosis in predicting outcomes in ICM.¹³⁻¹⁶ However, to the best of our knowledge, there is a lack of evidence regarding the additional prognostic

From the ^aCentro Cardiologico Monzino IRCCS, Milan, Italy; ^bDepartment of Biomedical, Surgical and Dental Sciences, University of Milan, Milan, Italy; ^cUniversity Cardiology Unit, Interdisciplinary Department of Medicine, University of Bari Aldo Moro, Bari, Italy; ^dDepartment of Electronics, Information and Bioengineering, Politecnico di Milano, Milan, Italy; ^eCardiovascular Section, Department of Clinical Sciences and Community Health, University of Milan, Milan, Italy; ^fDepartment of Cardiology, Policlinico di Monza, Monza, Italy; ^gU.O.C. Risonanza Magnetica per Immagini, Fondazione G. Monasterio CNR-Regione Toscana Pisa, Pisa, Italy; ^hDepartment of Radiology, University Hospital Leuven, Leuven, Belgium; ⁱCardiac Department, Vannini Hospital Rome, Rome, Italy; ^jDepartment of Cardiology, Infermi Hospital, Rimini, Italy; ^kCardiovascular and Thoracic Department, Careggi Hospital, Florence, Italy; ^lDepartment of Medical and Surgical Sciences, University of Foggia, Foggia, Italy; ^mMaria Cecilia Hospital, GVM Care and Research, Cotignola (RA), Italy; ⁿScienze Radiologiche, Department of Medicine and Surgery, University of Parma, Parma, Italy; ^oDivision of Cardiothoracic Imaging, Emory University, Atlanta, Georgia, USA; ^pDepartment of Cardiac, Thoracic, Vascular Sciences and Public Health University of Padua Medical School, Padova, Italy; ^qRadiology Department, Policlinico Casilino, Rome, Italy; ^rDepartment of Medical Biotechnologies, Division of Cardiology, University of Siena, Siena, Italy; ^sDepartment of Cardiology, Azienda Ospedaliero-Universitaria, Parma, Italy; ^tDepartment of Radiology, University of Foggia, Foggia, Italy; ^uCardiology Department, Policlinico Casilino, Rome, Italy; ^vMultimodality Cardiac Imaging Section, IRCCS Policlinico San Donato, San Donato Milanese, Milan, Italy; ^wInstitute of Management, Scuola Superiore Sant'Anna, Pisa, Italy; ^xHospital Universitari Vall d'Hebron, Department of Cardiology, Vall d'Hebron Institut de Recerca (VHIR), Universitat Autònoma de Barcelona, Barcelona, Spain, Centro de Investigación Biomédica en Red-CV, CIBER CV, Spain; ^yDepartment of Diagnostic, Parma University Hospital, Parma, Italy; ^zDepartment of Medicine and Surgery, University of Parma, Parma, Italy; ^{aa}De Gasperis' Cardio Center, ASST Grande Ospedale Metropolitano Niguarda, Milan, Italy; ^{bb}Department of Cardiology, ASST Monza, P.O. Desio, Italy; ^{cc}Dipartimento Neuro-Cardiovascolare, Ospedale Ca' Foncello Treviso, Treviso, Italy; ^{dd}Cardiovascular Department, CMR Center, University Hospital Lausanne, CHUV, Lausanne, Switzerland; ^{ee}Department of Radiology, Careggi Hospital, Florence, Italy; ^{ff}Loyola University of Chicago, Chicago, Illinois, USA; ^{gg}Edward Hines Jr VA Hospital, Hines, Illinois, USA; ^{hh}Radiology Department, Vannini Hospital Rome, Rome, Italy; ⁱⁱDivision of Cardiovascular Imaging, Department of Radiology and Radiological Science, Medical University of South Carolina, Charleston, South Carolina, USA; ^{jj}U.O.C. Radiologia, "F. Spaziani" Hospital, Frosinone, Italy; ^{kk}Department of Radiology, Fondazione IRCCS Policlinico S. Matteo, Pavia, Italy; ^{ll}School of Biomedical Engineering and Imaging Sciences, King's College London, London, United Kingdom; and the ^{mmm}Faculty of Medicine and Biology, University of Lausanne, UNIL, Lausanne, Switzerland. *Drs Pontone and Guaricci are equal contributors and first authors. †Dr Pica recently passed away. The authors attest they are in compliance with human studies committees and animal welfare regulations of the authors' institutions and Food and Drug Administration guidelines, including patient consent where appropriate. For more information, visit the [Author Center](#).



value of CMR compared with standard of care in ICM to identify low-risk patients for SCD events in the setting of patients with LVEF $\leq 35\%$ and, on the other side, to identify high-risk patients for SCD events in the setting of LVEF $> 35\%$. Accordingly, the DERIVATE-ICM (CarDiac MagnEtic Resonance for Primary Prevention Implantable CardioVerter Debrillator ThErapy; [NCT03352648](#)) registry has the aim to evaluate the net reclassification improvement (NRI) for the indication of ICD implantation by the use of CMR compared with standard of care based on transthoracic echocardiography (TTE) LVEF evaluation in consecutive patients with ICM enrolled in several centers across Europe and the United States and using diverse CMR machine vendors.

METHODS

STUDY DESIGN AND TARGET POPULATION. DERIVATE-ICM is an international, multicenter, prospective, observational registry including consecutive patients with heart failure caused by ICM from 21

sites across Europe and the United States.¹⁷ Inclusion criteria were: 1) age 18 years or older; 2) chronic heart failure (> 3 months from the last decompensated heart failure) with reduced LVEF $< 50\%$ as measured at initial TTE; and 3) ischemic etiology of LV dysfunction, defined as the presence of 1 of the following criteria: a) previous percutaneous coronary intervention or coronary artery bypass grafting; b) angiographic evidence of coronary artery disease with $\geq 70\%$ stenosis in ≥ 1 epicardial vessel or a significant lesion of the left main coronary artery or proximal left anterior descending coronary artery; and c) evidence of ischemic scar at late gadolinium enhancement (LGE) imaging in a specific coronary perfusion territory involving at least 2 contiguous myocardial segments according to American Heart Association LV segmentation.¹⁸ Exclusion criteria were severe valvular diseases, primary or secondary cardiomyopathies other than ICM, acute coronary syndromes within 40 days of admission, and congenital heart diseases. According to the inclusion and exclusion criteria, 861 patients with ICM were

enrolled in this study (Figure 1). The study conforms to the principles of the Declaration of Helsinki.

CLINICAL PATIENT ASSESSMENT AND DATA COLLECTION. The following clinical information was collected: demographic characteristics; medical history, with particular regard to signs and symptoms of heart failure; cardiovascular risk factors; and medical therapy. Standardized definitions for cardiovascular risk factors were used as follows: 1) family history of coronary artery disease in first-degree relatives; 2) current or previous smoking; 3) hyperlipidemia (low-density lipoprotein cholesterol >40 mg/dL); 4) diabetes mellitus (fasting glucose level >110 mg/dL or need for insulin or oral hypoglycemic drugs); and 5) hypertension (blood pressure >140/90 mm Hg or use of antihypertensive agents). All data were recorded in a standardized case report form.

TTE PROTOCOL PERFORMANCE AND ANALYSIS. TTE was performed with patients in left lateral decubitus in the parasternal (long- and short-axis) and apical (4-, 2-, and 3-chamber) views. For each patient the following measurements were acquired and collected: left ventricle end-diastolic and end-systolic volumes, LVEF calculated from the Simpson method, diastolic function, tricuspid annular plane systolic excursion, and pulmonary artery systolic pressure.¹⁹

CMR PROTOCOL PERFORMANCE AND ANALYSIS. After the acquisition of localizers, breath-hold cine steady-state free precession (SSFP) sequences were used for functional analysis with the following minimum requirements: in-plane spatial resolution of <2.0 mm × <2.0 mm, slice thickness ≤8 mm, gap 0-2 mm, and temporal resolution 35-50 ms. Cine-SSFP were acquired in long-axis views, and a base-to-apex stack of short axis images was used to quantify LV volumes, mass, and LVEF. Ten to 15 minutes after an intravenous bolus of 0.1-0.2 mmol/kg gadolinium-based contrast agent according to the local acquisition protocol, late gadolinium enhancement (LGE) was acquired according to each center's protocol, using segmented phase-sensitive gradient-echo inversion-recovery sequences. LGE imaging was carried out in the same orientation as the cine-SSFP images, and the inversion time was adjusted on magnitude images to null normal myocardium.²⁰ The CMR data set was transferred to the core laboratory and centrally evaluated by 1 certified expert reader with more than 5 years of experience. Analysis of CMR was blinded to the patients' history, demographic data, echocardiographic data, and outcome as previously described.^{21,22} The following

parameters were collected employing a segmentation process using CVI 4.2 (5.11.2) software (Circle Software) by using automatic segmentation followed by manual correction: 1) standard left ventricle (LV) and right ventricular (RV) volumetric parameters: LV end-diastolic volume, LV end-systolic volume, LV stroke volume, LVEF, LV mass, RV end-diastolic volume, RV end-systolic volume, RV stroke volume, and RVEF; and 2) for LGE, the analysis was performed defining hyperenhanced myocardium as any myocardial segment with a signal intensity increase >5 SD above the mean signal intensity of remote myocardium. According to the definition, the number of myocardial segments with LGE and absolute LGE mass were calculated as previously described.^{16,22} For each patient, the number of myocardial segments involved by LGE was counted according to the American Heart Association myocardial segments classification.¹⁸

FOLLOW-UP AND CLINICAL OUTCOME. Patient follow-up was performed at each local institution, by dedicated personnel. The combined endpoint consisted of major adverse arrhythmic cardiac events (MAACE), defined as the combination of SCD, aborted SCD event, and sustained ventricular tachycardia. In patients with devices and history of ICD shock, electrograms were reviewed to determine arrhythmias and to decide whether delivered shocks were appropriate or inappropriate.

Event ascertainment was determined by direct interview during office visits or telephone contact with the patient or a close family member, patient's cardiologist, or general physician in case of death. Moreover, referral physician or cardiologist and review of the patient's medical records represented further means of information (eg, ICD interrogation and 24-hour electrocardiogram [ECG]-Holter monitoring). A monitoring plan was applied for the processing and quality control of all data recorded in the case report forms.

STATISTICAL METHOD. Statistical analysis was performed using SPSS 25 (SPSS Inc), R version 3.3 and Stata version 14 (StataCorp LLC). Continuous variables were expressed as mean ± SD or median (25th-75th percentile) as appropriate and discrete variables as absolute numbers and percentages. Student's *t*-test or Mann-Whitney tests were used as appropriate to compare continuous variables between patients with and without MAACE. Comparisons between groups of discrete variables were performed by chi-square or Fisher exact test if the expected cell count was <5. Univariate Cox proportional hazard

models were used to identify predictors for study endpoints. All TTE and CMR variables with $P < 0.05$ at univariate analysis were considered for inclusion in multivariate Cox proportional hazard models after excluding collinear predictors based on the variance inflation factor. According to the Cox proportional hazard models TTE and CMR weighted scores were calculated. The discriminatory and risk reclassification ability of the developed CMR multivariable model was compared with the standard of care model including the TTE-LVEF cutoff of 35% and the developed TTE multivariable model using the NRI index, respectively. Finally, the Kaplan-Meier method and survival curves estimated event-free survival related to the study endpoints. All results were considered significant with values of $P < 0.05$.

RESULTS

The study cohort consisted of 861 subjects (mean age: 65 ± 11 years; male: 739 [86%]). Patient baseline characteristics are listed in **Table 1**. TTE and CMR tests were performed successfully in all patients with a median interval of 3 days (25th-75th percentile: 2-5 days), and TTE and CMR baseline characteristics are listed in **Table 2**. The median follow-up time was 1,054 days (25th-75th percentile: 562-1,583 days). MAACE occurred in 88 (10.2%) patients, respectively. Cardiovascular death, SCD event, aborted SCD event, and sustained ventricular tachycardia occurred in 77 (9%), 10 (1%), 16 (6%), and 63 (7%), respectively. The sum of events exceeded the overall number of MAACE because several events could occur in the same patients but only the first one was counted for MAACE.

Patients who experienced MAACE showed a higher use of angiotensin-converting enzyme (ACE) inhibitors-AT1 blockade and antiarrhythmic therapy and a lower use of antithrombotic agents compared with patients who did not experience MAACE (**Table 1**). Moreover, higher LV end-diastolic volume index ($P < 0.01$), LV end-systolic volume index ($P < 0.01$), and lower LVEF ($P < 0.01$) was observed in patients with MAACE compared with patients without MAACE, regardless of the imaging modality used (**Table 2**). Finally, patients who experienced MAACE showed a higher number of myocardial segments with LGE ($P = 0.026$) and higher LGE mass ($P < 0.001$) compared with patients without MAACE, respectively (**Table 2**).

Univariable analysis for MAACE prediction is shown in **Table 3**. LV end-diastolic volume index, LV end-systolic volume index, and LVEF were all

TABLE 1 Baseline Characteristics

	All Patients (N = 861)	No MAACE (n = 773)	MAACE (n = 88)	P Value
Demographic characteristics				
Age, y	65 ± 11	65 ± 11	67 ± 10	0.189
Male	739 (86)	663 (86)	76 (86)	0.880
BSA, m ²	1.91 ± 0.21	1.91 ± 0.20	1.93 ± 0.22	0.317
Cardiovascular risk factor				
Family history of coronary artery disease	279 (32)	250 (32)	29 (34)	0.907
Smoking history	405 (47)	369 (48)	36 (40)	0.224
Hypertension	562 (65)	500 (65)	62 (71)	0.281
Hyperlipemia	531 (62)	482 (62)	49 (56)	0.223
Diabetes	275 (32)	249 (32)	26 (30)	0.611
NYHA functional class				0.190
I-II	637 (74)	577 (75)	60 (68)	
III-IV	224 (26)	196 (25)	28 (30)	
Medical therapy				
Beta-blockade	761 (88)	683 (88)	78 (89)	0.938
Ivabradine	72 (8)	67 (9)	5 (6)	0.338
ACE inhibitors/AT1 blockade	714 (83)	634 (82)	80 (91)	0.036
Diuretic agents	625 (73)	558 (72)	67 (76)	0.431
Calcium blockade	74 (9)	68 (9)	6 (7)	0.530
Antithrombotic agents	728 (85)	661 (86)	67 (76)	0.021
Anticoagulant therapy	227 (26)	197 (26)	30 (34)	0.083
Nitrates	135 (16)	117 (15)	18 (21)	0.194
Statins	666 (77)	601 (78)	65 (74)	0.409
Amiodarone/other antiarrhythmics	195 (23)	165 (21)	30 (34)	0.007

Values are mean ± SD or n (%). **Bold** values indicate $P < 0.05$.
 ACE = angiotensin-converting enzyme; BSA = body surface area; MAACE = major adverse arrhythmic cardiac events.

predictors of MAACE ($P < 0.01$) for both TTE and CMR imaging modalities. In addition, both the number of myocardial segments with LGE ($P = 0.05$) and LGE mass ($P = 0.001$) were predictors of MAACE, as well. Multivariable analysis for MAACE prediction is shown in **Table 4**. For the TTE model, both LVEDVI ($P = 0.045$) and LVEF ($P = 0.023$) were associated with MAACE. Similar to the TTE model, both LVEDVI ($P = 0.05$) and LVEF ($P = 0.045$) as detected by CMR were independent predictors of MAACE. In addition, LGE mass ($P = 0.015$) was associated with MAACE. Based on the multivariable analysis, TTE and CMR weighted risk scores were developed according to the following equation: $0.007 \times \text{EDV/body surface area (BSA)} (\text{mL/m}^2) - 0.032 \times \text{LVEF} (\%)$ and $0.005 \times \text{EDV/BSA} (\text{mL/m}^2) - 0.029 \times \text{LVEF} (\%) + 0.010 \times \text{LGE scar mass (g)}$ for TTE and CMR, respectively.

Based on these results, the study population was divided for both TTE and CMR scores into 4 quartiles by considering low-, intermediate- and high-risk patients who fell into the first (Q1), second to third (Q2-Q3), and fourth quartiles (Q4), respectively.

Figures 2 and 3 show the comparison between the CMR risk score vs the model based on a TTE-LVEF

TABLE 2 TTE and CMR Baseline Characteristics

	All Patients (N = 861)	No MAACE (n = 773)	MAACE (n = 88)	P Value
TTE				
LVEDVI, mL/m ²	91 ± 32	90 ± 32	101 ± 33	0.006
LVESVI, mL/m ²	61 ± 27	60 ± 26	71 ± 28	0.001
LVEF, %	34 ± 10	34 ± 10	31 ± 10	0.001
LVEF <35%	500/861 (58)	438/773 (57)	62/88 (70)	0.012
CMR				
LVEDVI, mL/m ²	124 ± 43	122 ± 41	143 ± 50	<0.001
LVESVI, mL/m ²	91 ± 39	89 ± 37	111 ± 46	<0.001
LVEF, %	28 ± 10	29 ± 10	24 ± 10	<0.001
LVEF <21%	241/861 (28)	199/773 (26)	42/88 (48)	<0.001
LVSV, mL	33 ± 12	33 ± 12	32 ± 12	0.370
LV mass/BSA, g/m ²	75 ± 25	74 ± 25	81 ± 25	0.011
RVEDVI, mL/m ²	69 ± 31	69 ± 31	69 ± 27	0.947
RVESVI, mL/m ²	40 ± 25	40 ± 25	41 ± 25	0.683
RVEF, %	44 ± 16	44 ± 16	43 ± 16	0.518
RVSV, mL	52 ± 22	52 ± 22	52 ± 21	0.943
LGE, n° of segments	7.2 ± 4.0	7.1 ± 4.0	8.2 ± 3.4	0.026
LGE mass, gr	27.4 ± 20.8	26.5 ± 19.9	35.0 ± 26.0	0.001

Values are mean ± SD or n/N (%). **Bold** values indicate $P < 0.05$.

CMR = cardiac magnetic resonance; LGE = late gadolinium enhancement; LV = left ventricle; LVEDVI = left ventricle end diastolic volume indexed; LVEF = left ventricle ejection fraction; LVSV = left ventricle stroke volume; LVESVI = left ventricle end systolic volume indexed; RVEDVI = right ventricle end diastolic volume indexed; RVEF = right ventricle ejection fraction; RVESVI = right ventricle end systolic volume indexed; RVSV = right ventricle stroke volume; TTE = transthoracic echocardiography; other abbreviation as in Table 1.

cutoff of 35% and CMR risk score vs TTE risk score with a NRI of 31.7% and 29.6%, respectively.

The redistribution of the event rate (per 100 person-years) according to the CMR predictive model is represented in Figure 4, with evidence of how the CMR predictive model can estimate the prevalence of MAACE independently of the value of TTE-LVEF. Figure 5 shows 2 case examples.

DISCUSSION

The main results of our study are as follows: TTE and CMR parameters were the only independent predictors of MAACE over clinical data in patients with ICM; LGE quantification was an independent predictor of MAACE beyond LVEF; a multiparametric CMR weighted predictive derived score including LVEDV, CMR-LVEF; and the amount of LGE identifies subjects at high risk for MAACE compared with TTE-LVEF cutoff of 35% with a NRI of 31.7% ($P = 0.007$).

Initially, following consistent evidence, LVEF has been considered the strongest independent predictor of SCD events with values below the cutoff of 30% to 35%, indicating a high-risk condition.^{2,3,23-25}

Theoretically, this implies that ICD placement in patients with low LVEF would lead to the prevention of both SCD events and all-cause mortality and, on the opposite, that patients with moderate-to-high LVEF would not need ICD implantation because they are at very low risk. However, more recent analysis showed that this simple and linear equation is not representative of the real world. Indeed, LVEF represents a global estimation of LV systolic function but is poorly related to the myocardial substrate underlying malignant ventricular tachyarrhythmias. To date, the standard of care evaluation for primary prevention ICD therapy is based on LVEF $\leq 35\%$ and NYHA functional class II or III class for both NICM and ICM.⁵⁻⁷ Although widely applied in a routine work-up, this strategy holds 2 major limitations. First, only a relatively small proportion of patients receiving ICD for primary prevention of SCD events benefit from this treatment, while still incurring a substantial risk of short- and long-term device-related complications. In this regard, a post hoc analysis of the MADIT II (Multicenter Automatic Defibrillator Implantation Trial II) showed that only 30% of ICD recipients has benefit from appropriate therapy within 3 years of follow-up after implantation, and a European registry demonstrated that among almost 5,000 patients who underwent primary-prevention ICD therapy, two-thirds died without any beneficial intervention from the device.²⁶ Moreover, up to one-fourth of patients with ICD experience inappropriate shocks, which significantly affects quality of life and is a cause of morbidity and mortality.⁴ In addition, most patients will need at least 1 ICD replacement over their lifetimes, with 40% requiring 2 replacements, with consequent additional complications and costs.²⁷ Second, SCD events may also occur in patients with normal to moderately depressed LVEF, which is particularly relevant, as it represents the most prevalent population of patients exposed to increased risks of SCD events.¹⁰ Therefore, novel prognostic stratification strategies are needed to improve the delivery of ICD therapy to patients who may benefit from it while withholding device implantation in those at low risk of SCD events.

CMR imaging is a standardized technique that represents the reference standard for LV volumes and LVEF measurement due to its high spatial resolution and independence from geometrical assumptions.^{28,29} In particular, several studies demonstrated an overestimation of LVEF assessment by TTE compared with CMR, mainly when an automatic myocardial segmentation is used.^{16,30}

TABLE 3 Univariable Analysis of MAACE

	Univariate Analysis	
	HR (95% CI)	P Value
Demographic characteristics		
Age, y	1.017 (0.996-1.037)	0.106
Male	1.115 (0.606-2.051)	0.726
BSA, m ²	1.710 (0.596-4.907)	0.318
Cardiovascular risk factor		
Family history of coronary artery disease	1.152 (0.738-1.799)	0.534
Smoking history	0.745 (0.486-1.142)	0.177
Hypertension	1.374 (0.869-2.174)	0.174
Hyperlipemia	0.715 (0.469-1.09)	0.118
Diabetes	0.951 (0.601-1.504)	0.831
NYHA functional class III-IV	1.49 (0.950-2.338)	0.083
TTE		
LVEDVI, mL/m ²	1.009 (1.003-1.015)	0.002
LVESVI, mL/m ²	1.013 (1.006-1.020)	<0.001
LVEF, %	0.964 (0.942-0.986)	0.002
LVEF <35%	1.930 (1.204-3.093)	0.006
CMR		
LVEDVI, mL/m ²	1.009 (1.005-1.014)	<0.001
LVESVI, mL/m ²	1.011 (1.007-1.016)	<0.001
LVEF, %	0.954 (0.931-0.977)	<0.001
LVSV, mL	0.990 (0.972-1.009)	0.309
LV mass/BSA, g/m ²	1.009 (1.001-1.016)	0.024
RVEDVI, mL/m ²	1.001 (0.994-1.008)	0.723
RVESVI, mL/m ²	1.003 (0.995-1.011)	0.433
RVEF, %	0.994 (0.981-1.007)	0.390
RVSV, mL	1.000 (0.990-1.010)	0.996
LGE, n° of segments	1.057 (1.000-1.117)	0.050
LGE mass, g	1.014 (1.006-1.022)	0.001

Bold values indicate $P < 0.05$.
 Abbreviations as in [Tables 1 and 2](#).

A strength of CMR consists in the possibility to evaluate the tissue characterization of the myocardium, thanks to its ability to identify edema, interstitial fibrosis, and irreversible myocardial scar by LGE imaging. It is well known that the fibrous

tissue may result from the healing process after myocardial infarction or inflammatory processes and can induce re-entry phenomena.^{12,13} In keeping with this cause-and-effect mechanism, the evidence of LGE through the use of CMR could correlate with patient mortality and, in particular, with arrhythmic major cardiac events, opening a new scenario in the evaluation of patients for prophylactic ICD therapy. In particular, Pontone et al¹⁶ have concluded a study on 409 consecutive patients with ICM and dilated cardiomyopathy with chronic heart failure referred for evaluation of prophylactic ICD placement. The study demonstrated that the addition of the presence of LGE to the model including clinical data, TTE-LVEF, and CMR-LVEF provided a significant improvement in the outcome prediction. The current analysis reinforces the strength of previous reports regarding the importance of employing a multiparametric imaging approach able to provide information on tissue characterization, together with precise functional assessment. Notwithstanding, the dichotomic presence or absence of LGE misses the possibility of estimating the risk prediction according to quantitative data and topographic and structural features of fibrosis itself. Moreover, the limited number of patients and the methods of the study did not allow us to make prognostic considerations related to the pathogenetic nature of the cardiomyopathy.

Of note, RV parameters did not predict outcome as previously reported.³¹ However, some reasons could explain this apparent discrepancy. First, only ischemic ICM was included in our registry compared with previous reports including idiopathic cardiomyopathy. Indeed, it is well known from the published reports that RV dysfunction is more associated with heart failure death rather than with arrhythmic events. Second, in the majority of studies, all-cause mortality was used as endpoint, whereas, in our paper, only adverse arrhythmic cardiac events were considered. Finally, the mean RVEF of our study population was 44%, suggesting a population with mild reduction of RV function.

In contrast to the previous studies, the current international, multicenter, observational study included a population of patients with ICM and a broad range of LV dysfunction (LVEF <50%) and highlights the value of a multiparametric approach in decision making about ICD therapy.

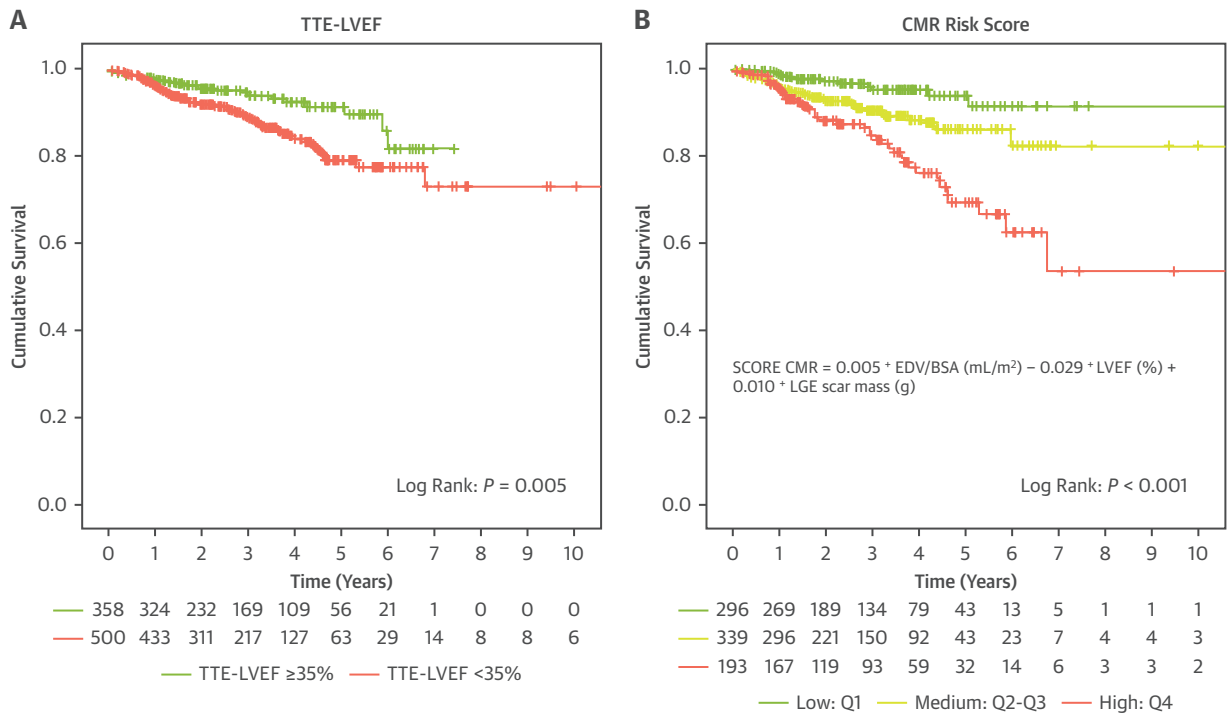
Further data will be generated by the PROFID (Implementation of Personalised Risk Prediction and Prevention of Sudden Cardiac Death After Myocardial Infarction) project³² funded by the European Union in the setting of Horizon 2020 program. This project

TABLE 4 Multivariate TTE and CMR Analysis of MAACE

	Multivariate Analysis	
	HR (95% CI)	P Value
TTE model		
LVEDVI, mL/m ²	1.007 (1.000-1.013)	0.045
LVEF, %	0.968 (0.942-0.996)	0.023
CMR model		
LVEDVI, mL/m ²	1.005 (1.000-1.011)	0.050
LVEF, %	0.972 (0.945-0.999)	0.045
LGE mass, g	1.010 (1.002-1.018)	0.015

Bold values indicate $P < 0.05$.
 Abbreviations as in [Table 2](#).

FIGURE 2 Comparison Between CMR Risk Score vs Model Based on a TTE-LVEF Cutoff of 35%



C

		Model Based on Composite CMR Risk Score		
		Low Risk	High Risk	% Reclassified
Model Based on TTE-LVEF	No MAACE			
	Low Risk	271	22	8
	High Risk	245	154	61
	MAACE			
	Low Risk	18	4	18
	High Risk	24	33	42

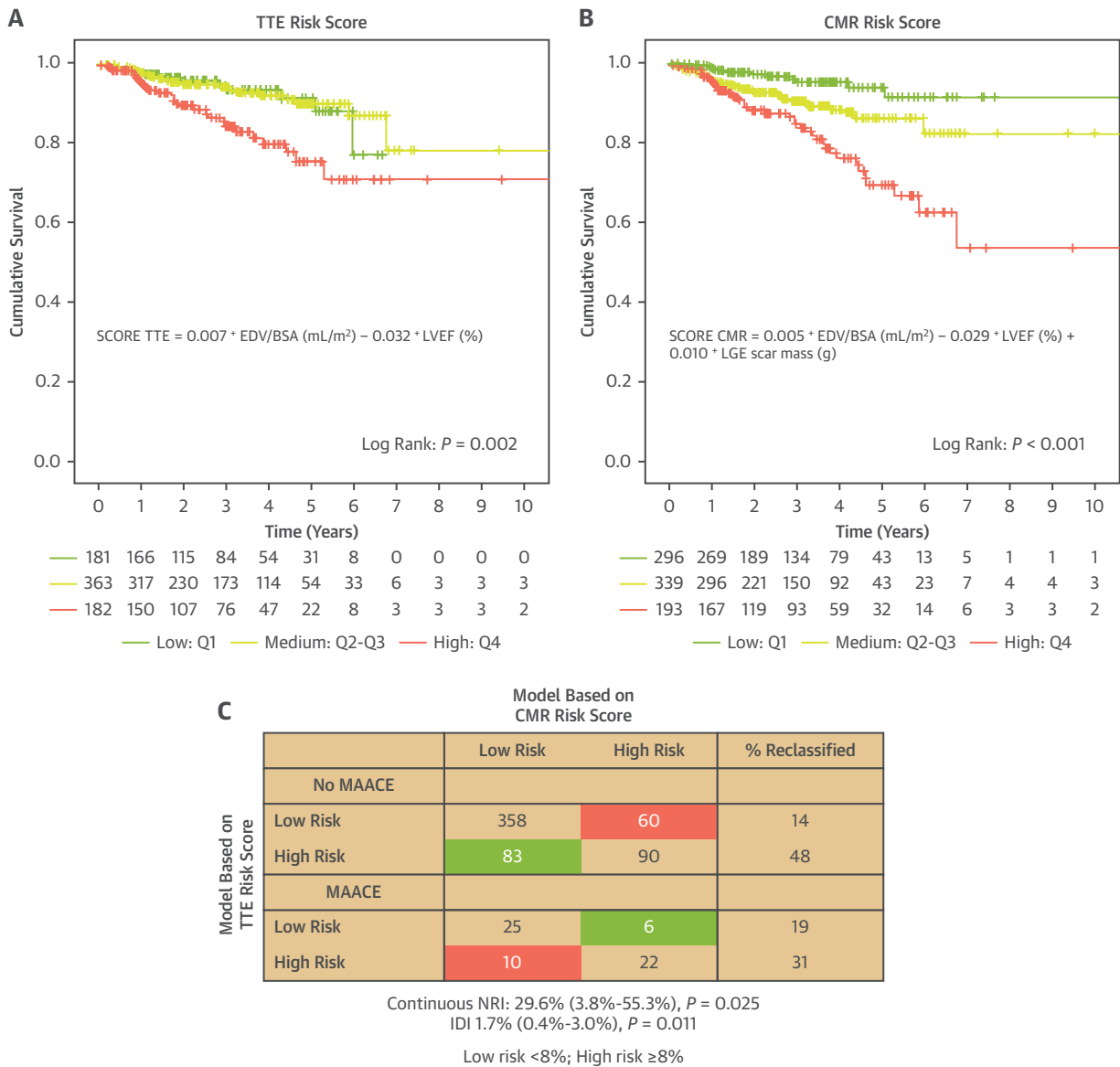
Continuous NRI: 31.7% (8.6%-54.8%), $P = 0.007$
 IDI 2.1% (1.0%-3.3%), $P < 0.001$
 Low risk <8%; High risk ≥8%

(A) Kaplan-Meier curves according to the guidelines-based TTE-LVEF model. (B) Kaplan-Meier curves according to the CMR weighted score as derived from multivariate analysis. (C) Table of reclassification of the CMR vs TTE predictive model. CMR = cardiac magnetic resonance; IDI = integrated discrimination index; LVEF = left ventricular ejection fraction; LVEDVI = left ventricular end diastolic volume indexed; NRI = net reclassification index; Q1 = first quartile; Q2 = second quartile; Q3 = third quartile; Q4 = fourth quartile; TTE = transthoracic echocardiography.

consists of 2 steps: 1) analysis of existing evidence from a large variety of different data sources, including national registries of postinfarction patients, registries of primary prevention ICD

placement, electronic health records, and claims databases by a combination of traditional statistical methods and machine-learning techniques to develop an individual risk predictive model for SCD events;

FIGURE 3 Comparison Between CMR Risk Score vs TTE Risk Score

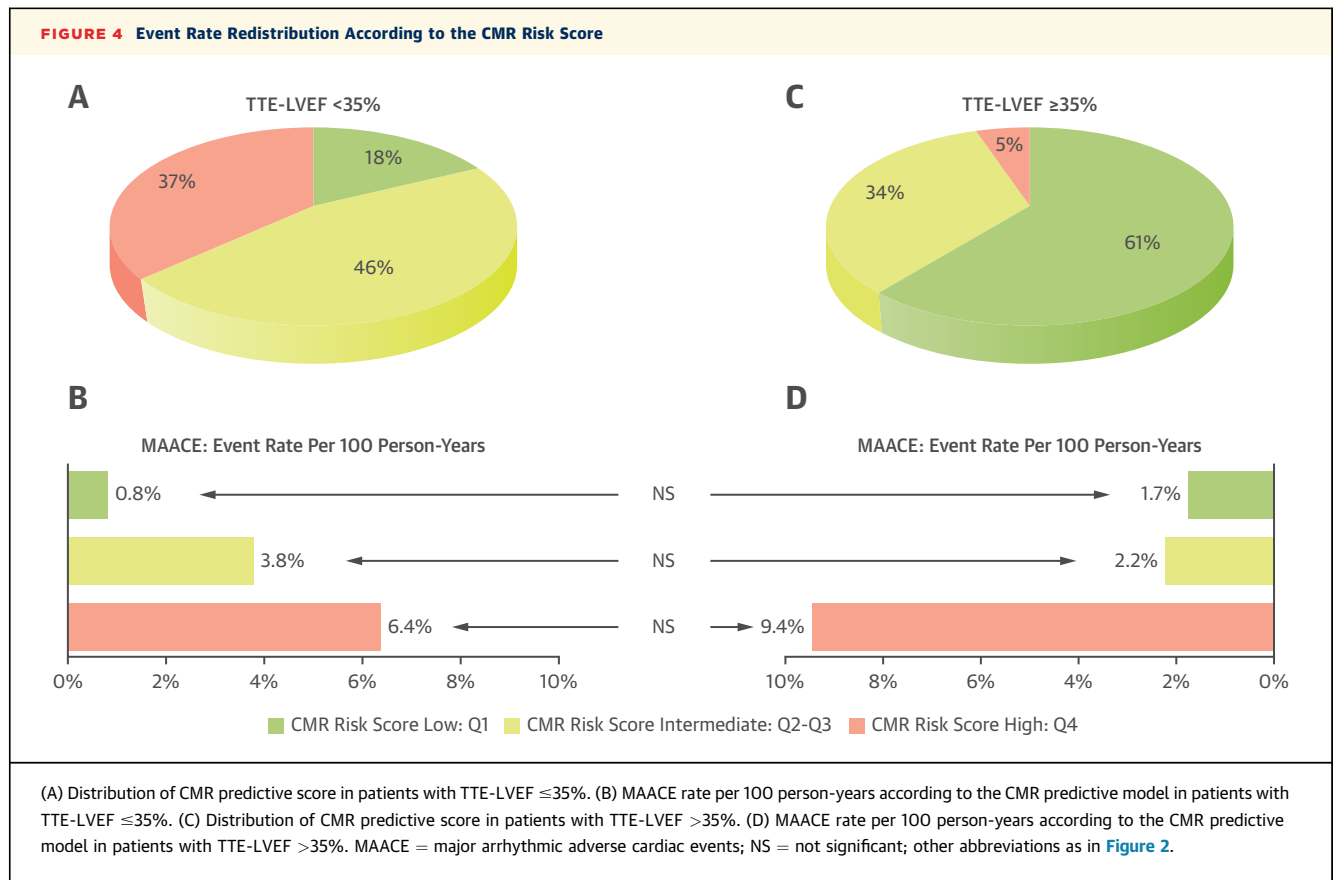


(A) Kaplan-Meier curves according to the TTE weighted score as derived from multivariate analysis. (B) Kaplan-Meier curves according to the CMR weighted score as derived from multivariate analysis. (C) Table of reclassification of the CMR vs TTE predictive model. Abbreviations as in Figure 2.

and 2) this model will be applied to large randomized clinical trials in patients with lower than and higher than 35% LVEF.

STUDY LIMITATIONS. This study is based on a prospective registry; therefore, unlike randomized control trials (RCTs), the current study is subject to

referring biases (which are not corrected by randomization), and, consequently, it cannot, for example, explore disease pathomechanisms, and it cannot compare with a control group. However, the large registry structure allows for assessing the impact of CMR on risk stratification in a real-world routine



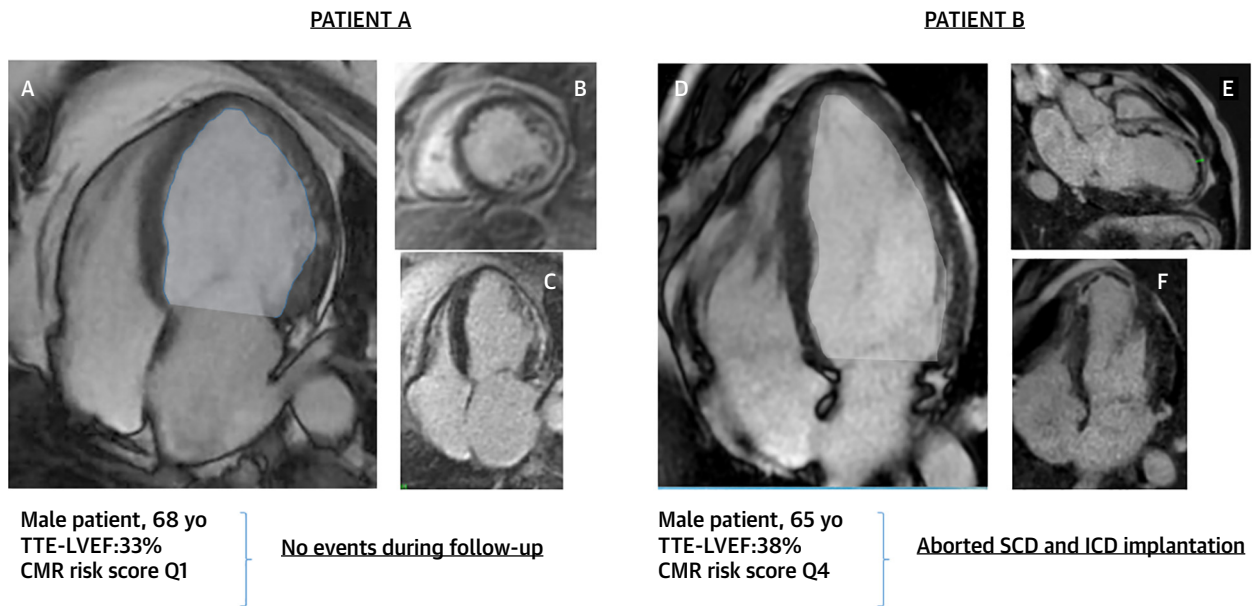
situation involving multiple centers and multiple CMR protocols and magnetic resonance imaging machine vendors. Despite this variability, a strong prognostic power is documented for LGE-CMR in our large study population, which should further increase the generalizability of the result.³³ In this context, the judgment of authoritative published reports—stating that there is no significant difference between the estimates provided by RCTs vs well-conducted observational studies—is important to consider. Accordingly, the adoption of CMR-derived information by international recommendations for ICD placement in patients with ICM should not be avoided despite the lack of RCT results. Second, physicians referred the enrolled patients for potential ICD placement, and this might have introduced a selection bias. In this regard, given both TTE and CMR were done clinically on all patients, and their results were not blinded, the effects of association with outcomes likely is a mixture of the diagnostic values of both tests, and their impact cannot be easily separated, as they are not independent strategies.

However, this approach reflects the real-world experience in which the interaction of different imaging modalities is the standard in the clinical decision-making process.

Third, our reference model based on LVEF cutoff as detected by TTE could be considered too simplistic. However, this kind of reference is still considered a unique criterion for primary prevention ICD therapy. Therefore, we have decided to calculate the additional value of a CMR-based model on top of reference according to actual guidelines. However, a head-to-head comparison between both TTE and CMR weighted derived score was also performed to overcome this potential bias, confirming a CMR additional value.

Fourth, in this wide registry, a relatively low rate of MAACE was observed. By purpose, the registry also included patients with LVEF up to 50%: ie, also patients with LVEF higher than 35% to test whether a novel risk prediction model can identify high-risk patients in the population with LVEF $\geq 35\%$ in the population currently not fulfilling the guideline-

FIGURE 5 Clinical Cases



(A to C) Patient with TTE-LVEF of 33% (ie, fulfilling current guidelines criteria for ICD implantation) showing a Q1 CMR risk score according to LVEDVI (A) and LGE extent inversion recovery CMR images (B to C). According to the CMR predictive model the patient does not satisfy any CMR criteria suggestive of high risk for SCD event and indeed no events were recorded during the follow-up. (D to F) Patient with TTE-LVEF of 38% (ie, not fulfilling current guidelines criteria for ICD placement), showing a Q4 CMR risk score according to LVEDVI (D) and LGE extent (E to F). According to the CMR predictive model, the patient satisfies criteria suggestive of high risk for SCD event, and, indeed, aborted SCD event after ICD placement was recorded during the follow-up. Abbreviations as in [Figure 2](#).

based criteria for ICD placement. Along this line, also patients without history of ventricular arrhythmias were enrolled, which is likely to affect the rate of arrhythmic outcomes.

Fifth, in our predictive model, the LGE quantification plays a pivotal role. However, the detection of absolute amount of LGE is strongly dependent on many factors such as the type of contrast agent, the absolute injected dose, and the administration regimen. Unfortunately, all of this information was not collected in detail in this registry, and therefore the impact of contrast agent injection protocol on our model cannot be evaluated

Finally, no validation cohort was included in this registry. Therefore, further studies are required to confirm our findings in an independent cohort of patients with similar baseline characteristics.

CONCLUSIONS

In this large multicenter multivendor setting, we showed that a CMR risk score identifies over the TTE

parameters, a subset of patients with TTE-LVEF <35% at low risk of SCD events, and, on the other side, it identifies a subset of patients who are at high risk of MAACE despite TTE-LVEF \geq 35%. The incremental value of this score is mainly related to the integration of LGE quantification in a model including LV volume and function that is a unique prerogative of CMR ([Central Illustration](#)). Further randomized trials to test a CMR-guided strategy for ICD implantation vs standard of care are now needed.

ACKNOWLEDGMENTS The authors thank Giacomo Guasti, Gianmarco Avanzini, Viviana Pignatelli, Carlotta Marzi, Carlotta Milani, Francesco Bottazzo, Michael Orlandi, and Rosa Rendina (Parma); Caroline Ball (Chicago); Gerardo Ansalone (Rome); Guillem Casas (Barcelona); Riccardo Bentivegna (Palermo); Pavesi Claudia (Pavia); Toufic Khouri (Monza); Elisabetta Tonet (Ferrara); Tondi Lara (Milan); Luca Macarini (Foggia); Giovanni Rinaldi (Rimini); Renato Valenti (Florence); Benedetta Maria Natali (Siena); Claudia Zanetti (Padova); and Monia Minati (Rome).

CENTRAL ILLUSTRATION MAACE Prediction Based on CMR in ICM Patients

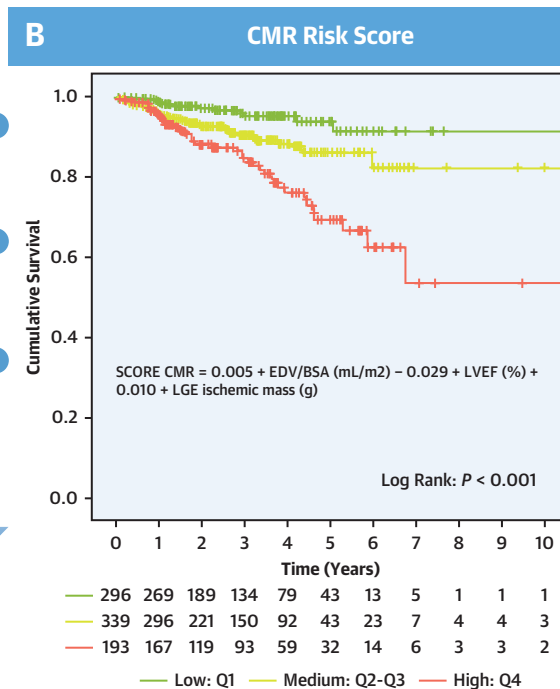
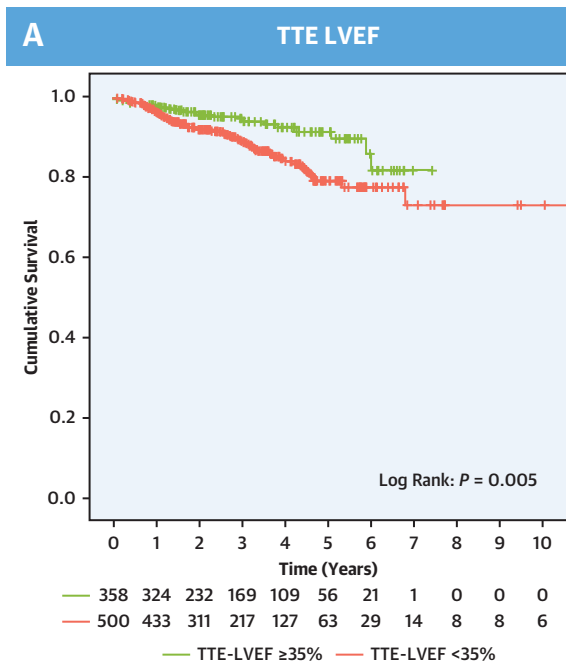


Transthoracic Echocardiogram

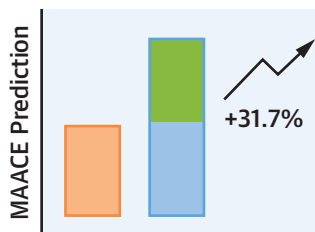


Cardiac Magnetic Resonance

VS



Net Reclassification Improvement (NRI)



Pontone G, et al. *J Am Coll Cardiol Img.* 2023;16(11):1387-1400.

A multiparametric CMR predictive model identifies subjects at high risk for MAACE, regardless of the TTE-LVEF with a NRI of 31.7%. BSA = body surface area; CMR = cardiac magnetic resonance; EDV = end diastolic volume; ICM = ischemic cardiomyopathy; LGE = late gadolinium enhancement; LVEF = left ventricle ejection fraction; MAACE = major arrhythmic adverse cardiac events; NRI = net reclassification index; Q1 = first quartile; Q2 = second quartile; Q3 = third quartile; Q4 = fourth quartile; TTE = transthoracic echocardiography.

The authors extend a personal tribute to Dr Silvia Pica: a great doctor, imager, and woman.

FUNDING SUPPORT AND AUTHOR DISCLOSURES

The Italian Ministry of Health, Rome, Italy (RC 2017 R659/17-CCM698) has provided funding for this study. Dr De Cecco has received a grant from Siemens. Dr Pontone has received institutional fees from General Electric, Bracco, Heartflow, Medtronic, Bayer, and Bhoeringher. Dr Schwitter has received research support from Bayer Healthcare Switzerland. Dr Schoepf has received grants from Astellas, Bayer, General Electric, and Siemens Healthcare; personal fees from Guerbet; and speaking honoraria from Heartflow. Dr Varga-Szemes has received grants from Siemens Healthcare and personal fees from Elucid Bioimaging. All other authors have reported that they have no relationships relevant to the contents of this paper to disclose.

ADDRESS FOR CORRESPONDENCE: Dr Gianluca Pontone, Centro Cardiologico Monzino IRCCS, Via Carlo Parea 4, 20138 Milan, Italy. E-mail: gianluca.pontone@ccfm.it.

PERSPECTIVES

COMPETENCY IN MEDICAL KNOWLEDGE: ICD in primary prevention has been demonstrated to reduce the rate of sudden cardiac deaths in ICM.

COMPETENCY IN PATIENT CARE AND PROCEDURAL SKILLS: The prediction of arrhythmic risk is suboptimal because of the absence of appropriate interventions after ICD placement and of the exclusion of patients incorrectly considered to be at low risk with current methods.

TRANSLATIONAL OUTLOOK: By comparing the standard of care evaluation vs a CMR-guided strategy for ICD therapy, the DERIVATE-ICM registry shows a better stratification of arrhythmic risk, especially in the population that currently does not fulfil the implantation criteria.

REFERENCES

1. Adabag AS, Luepker RV, Roger VL, Gersh BJ. Sudden cardiac death: epidemiology and risk factors. *Nat Rev Cardiol*. 2010;7:216-225.
2. Moss AJ, Zareba W, Hall WJ, et al. Prophylactic implantation of a defibrillator in patients with myocardial infarction and reduced ejection fraction. *N Engl J Med*. 2002;346:877-883.
3. Kadish A, Dyer A, Daubert JP, et al. Prophylactic defibrillator implantation in patients with non-ischemic dilated cardiomyopathy. *N Engl J Med*. 2004;350:2151-2158.
4. Reynolds MR, Cohen DJ, Kugelmass AD, et al. The frequency and incremental cost of major complications among Medicare beneficiaries receiving implantable cardioverter-defibrillators. *J Am Coll Cardiol*. 2006;47:2493-2497.
5. Yancy CW, Jessup M, Bozkurt B, et al. 2013 ACCF/AHA guideline for the management of heart failure: a report of the American College of Cardiology Foundation/American Heart Association Task Force on practice guidelines. *J Am Coll Cardiol*. 2013;62(16):e147-e239.
6. Priori SG, Blomstrom-Lundqvist C, Mazzanti A, et al. 2015 ESC guidelines for the management of patients with ventricular arrhythmias and the prevention of sudden cardiac death: the Task Force for the Management of Patients with Ventricular Arrhythmias and the Prevention of Sudden Cardiac Death of the European Society of Cardiology (ESC). Endorsed by: Association for European Paediatric and Congenital Cardiology (AEPC). *Eurpace*. 2015;36:2793-2867.
7. Ponikowski P, Voors AA, Anker SD, et al. 2016 ESC guidelines for the diagnosis and treatment of acute and chronic heart failure: the Task Force for the diagnosis and treatment of acute and chronic heart failure of the European Society of Cardiology (ESC) Developed with the special contribution of the Heart Failure Association (HFA) of the ESC. *Eur Heart J*. 2016;37:2129-2200.
8. McDonagh TA, Metra M, Adamo M, et al. 2021 ESC guidelines for the diagnosis and treatment of acute and chronic heart failure. *Eur Heart J*. 2021;42:3599-3726.
9. Kober L, Thune JJ, Nielsen JC, et al. Defibrillator implantation in patients with nonischemic systolic heart failure. *N Engl J Med*. 2016;375:1221-1230.
10. Stecker EC, Vickers C, Waltz J, et al. Population-based analysis of sudden cardiac death with and without left ventricular systolic dysfunction: two-year findings from the Oregon Sudden Unexpected Death Study. *J Am Coll Cardiol*. 2006;47:1161-1166.
11. Pontone G, Guaricci AI, Andreini D, et al. Prognostic Stratification of Patients With ST-Segment-Elevation Myocardial Infarction (PROSPECT): a cardiac magnetic resonance study. *Circ Cardiovasc Imaging*. 2017;10.
12. Bolick DR, Hackel DB, Reimer KA, Ideker RE. Quantitative analysis of myocardial infarct structure in patients with ventricular tachycardia. *Circulation*. 1986;74:1266-1279.
13. Disertori M, Rigoni M, Pace N, et al. Myocardial fibrosis assessment by LGE is a powerful predictor of ventricular tachyarrhythmias in ischemic and nonischemic LV dysfunction: a meta-analysis. *J Am Coll Cardiol Img*. 2016;9:1046-1055.
14. Bello D, Fieno DS, Kim RJ, et al. Infarct morphology identifies patients with substrate for sustained ventricular tachycardia. *J Am Coll Cardiol*. 2005;45:1104-1108.
15. Boye P, Abdel-Aty H, Zacharzowsky U, et al. Prediction of life-threatening arrhythmic events in patients with chronic myocardial infarction by contrast-enhanced CMR. *J Am Coll Cardiol Img*. 2011;4:871-879.
16. Pontone G, Guaricci AI, Andreini D, et al. Prognostic benefit of cardiac magnetic resonance over transthoracic echocardiography for the assessment of ischemic and nonischemic dilated cardiomyopathy patients referred for the evaluation of primary prevention implantable cardioverter-defibrillator therapy. *Circ Cardiovasc Imaging*. 2016;9(10):e004956.
17. Guaricci AI, Masci PG, Lorenzoni V, Schwitter J, Pontone G. CarDiac MagnEtic Resonance for Primary Prevention Implantable Cardioverter Defibrillator Therapy international registry: design and rationale of the DERIVATE study. *Int J Cardiol*. 2018;261:223-227.
18. Cerqueira MD, Weissman NJ, Dilsizian V, et al. Standardized myocardial segmentation and nomenclature for tomographic imaging of the heart: a statement for healthcare professionals from the Cardiac Imaging Committee of the Council on Clinical Cardiology of the American Heart Association. *Circulation*. 2002;105:539-542.
19. Lang RM, Bierig M, Devereux RB, et al. Recommendations for chamber quantification: a report from the American Society of Echocardiography's Guidelines and Standards Committee and the Chamber Quantification Writing Group, developed in conjunction with the European Association of Echocardiography, a branch of the European Society of Cardiology. *J Am Soc Echocardiogr*. 2005;18:1440-1463.
20. Kramer CM, Barkhausen J, Flamm SD, Kim RJ, Nagel E. Standardized cardiovascular magnetic resonance (CMR) protocols 2013 update. *J Cardiovasc Magn Reson*. 2013;15:91.
21. Schwitter J, Nagel E. Volumes, function and deformation: left and right ventricles and atria. In: Schwitter J, ed. *CMR-Update*. 3rd ed. www.herz-mri.ch; 2020;6-28.
22. Masci PG, Doulatpis C, Bertella E, et al. Incremental prognostic value of myocardial fibrosis in patients with non-ischemic cardiomyopathy

without congestive heart failure. *Circ Heart Fail*. 2014;7:448-456.

23. Buxton AE, Lee KL, Fisher JD, Josephson ME, Prystowsky EN, Hafley G. A randomized study of the prevention of sudden death in patients with coronary artery disease. Multicenter Unsustained Tachycardia Trial Investigators. *N Engl J Med*. 1999;341:1882-1890.

24. Bardy GH, Lee KL, Mark DB, et al. Amiodarone or an implantable cardioverter-defibrillator for congestive heart failure. *N Engl J Med*. 2005;352:225-237.

25. Goldberger JJ, Cain ME, Hohnloser SH, et al. American Heart Association/American College of Cardiology Foundation/Heart Rhythm Society Scientific Statement on noninvasive risk stratification techniques for identifying patients at risk for sudden cardiac death: a scientific statement from the American Heart Association Council on Clinical Cardiology Committee on Electrocardiography and Arrhythmias and Council on Epidemiology and Prevention. *J Am Coll Cardiol*. 2008;52:1179-1199.

26. Seegers J, Bergau L, Tichelbacker T, Malik M, Zabel M. ICD risk stratification studies: EU-CERT-

ICD and the European perspective. *J Electrocardiol*. 2016;49:831-836.

27. Poole JE, Gleva MJ, Mela T, et al. Complication rates associated with pacemaker or implantable cardioverter-defibrillator generator replacements and upgrade procedures: results from the REPLACE registry. *Circulation*. 2010;122:1553-1561.

28. Bellenger NG, Burgess MI, Ray SG, et al. Comparison of left ventricular ejection fraction and volumes in heart failure by echocardiography, radionuclide ventriculography and cardiovascular magnetic resonance; are they interchangeable? *Eur Heart J*. 2000;21:1387-1396.

29. Maffei E, Messalli G, Martini C, et al. Left and right ventricle assessment with cardiac CT: validation study vs. cardiac MR. *Eur Radiol*. 2012;22:1041-1049.


30. Rayatzadeh H, Patel SJ, Hauser TH, et al. Volumetric left ventricular ejection fraction is superior to 2-dimensional echocardiography for risk stratification of patients for primary prevention implantable cardioverter-defibrillator implantation. *J Am Coll Cardiol*. 2013;111:1175-1179.

31. Merlo M, Gobbo M, Stolfo D, et al. The prognostic impact of the evolution of RV function in idiopathic DCM. *J Am Coll Cardiol Img*. 2016;9:1034-1042.

32. Dagues N, Peek N, Leclercq C, Hindricks G. The PROFID project. *Eur Heart J*. 2020;41:3781-3782.

33. Concato J, Shah N, Horwitz RI. Randomized, controlled trials, observational studies, and the hierarchy of research designs. *N Engl J Med*. 2000;342:1887-1892.

KEY WORDS cardiac magnetic resonance, heart failure, implantable cardioverter-defibrillator, ischemic dilated cardiomyopathy, primary prevention



Go to <http://www.acc.org/jacc-journals-cme> to take the CME/MOC/ECME quiz for this article.