

© 2016. This manuscript version is made available under the CC-BY-NC-ND 4.0 license

<http://creativecommons.org/licenses/by-nc-nd/4.0/>

Il presente lavoro è stato pubblicato su *Microchemical Journal*, 129, 2016, 123-132 con doi

<https://doi.org/10.1016/j.microc.2016.06.020>

Title

Pigments Checker version 3.0, a handy set for conservation scientists: free online Raman spectra database.

Authors

M.C. Caggiani*, A. Cosentino**, A. Mangone*

Affiliations

* Department of Chemistry, Università degli Studi di Bari “Aldo Moro”

** Cultural Heritage Science Open Source, CHSOS, Viagrande, Italy

Corresponding author *

Antonino COSENTINO Email: antoninocose@gmail.com

Tel: 0039 3283211186

Abstract

Pigments Checker is a collection of swatches of historical and modern pigments that offers art professionals, conservation scientists, conservators and fine art photographers, a tool to evaluate and test their imaging and spectroscopic methodologies for pigment identification. “Pigments Checker Free Spectra Database” is an ongoing project to thoroughly characterize each pigment in the collection with a series of spectroscopic and imaging techniques and to make the data open access. This paper presents the free and downloadable database of Raman spectra, adding to the reflectance spectral database already published. The Raman analysis is in agreement with the information provided by the pigments’ manufacturers since most of the pigments could be identified by their Raman spectra which were consistent with the expected content reported in literature.

Keywords

Pigments, database, pigments checker, Raman, spectroscopy, art conservation

1. INTRODUCTION

Museums, libraries, historical archives and conservation laboratories are in need of scientific examination performed on their art, archaeology and archival collections in order to gain information of their constituent materials. These data allow to understand how, when and where they were made, and they are of great interest to art historians and curators which can have unprecedented insights into their collections. Conservators use this information to devise more effective preservation procedures. There are plenty of scientific analytical techniques which have been tested on museums’ collections and among them non-invasive and non-destructive methods are particularly appreciated since they do not require any sampling and do not cause any damage to the objects. Conservation scientists are specialized in art and archaeology examination and they use both Spectroscopy (such as Raman spectroscopy [1], XRF spectroscopy [2], neutron spectroscopy [3]) and Imaging methods (such as Technical photography [4], Terahertz [5] and Multispectral Imaging (MSI) [6]). Raman Spectroscopy has proved to be one of the most valuable methods to determine provenance and authenticity of artefacts of artistic, archaeological or historical significance. It is used to characterize very diverse objects, from biological materials to jewellery, and to comprehend their degradation processes. Its more popular application is for the identification of dyes and pigments. Raman spectroscopy is non-destructive, non-invasive and can be implemented as mobile and relatively lightweight equipment.

In the late 1990' when Raman spectroscopy started to show its potential in art conservation, a major issue was the lack of databases of reference Raman spectra which are necessary to compare spectra of unknown materials and properly interpret spectral features. Spectral libraries were published on scientific journals since then [7, 10] and even recently new libraries on more specific pigments and dyes collections have been presented [11].

Only in the early 2000' the first Raman databases of pigments were available online. University College London [12] was among the first to upload on their website a collection of spectra acquired with dispersive Raman at 514 nm and 632 nm; IRUG (Infrared and Raman users group) [13] is certainly the most extensive database with a supporting community submitting new spectra acquired with different equipment from the numerous partner institutions; E-Visart [14] is a database developed by University of the Basque Country (Spain) and it covers pigments and archeological materials with FT-Raman and dispersive Raman with excitation at 780 nm. The Romanian Database of Raman Spectroscopy [15] uses a 532 nm laser. Some Institutions also published large databases of minerals including pigments, such as University of Arizona [16] and University of Parma [17].

This paper presents and discusses a new online Raman database of the pigments contained in Pigments Checker [18], a collection of swatches of standard historical and modern pigments (fig. 1). The pigments are milled into the binder (acrylic) which is added as needed for each pigment and applied with brush. Among all the pigments and their varieties ever used in art these selected pigments represent the most used ones from antiquity to early 1950's. A swatch of just gum arabic is added as a reference. Pigments are painted over a cellulose and cotton cardboard, which is acid and lignin free, not treated with optical brighteners, slightly fluorescent in the UV and reflects infrared radiation. Two cross-hairs (0,2 mm) are printed on each swatch of cardboard before paint application in order to evaluate each pigment's transparency to infrared imaging.

Pigments Checker is an ongoing project which aims to select the best quality of the pigments and add new ones to the collection after careful research. Started in 2014, Pigments Checker has now reached version 3.0. Pigments Checker's project is pursued by CHSOS (Cultural Heritage Science Open Source), an initiative to promote innovative, affordable and sustainable technologies for art examination for the art professional community.

"Pigments Checker Free Spectra Database" is a collaborative effort to develop a free and downloadable spectral database of the pigments contained in Pigments Checker: Reflectance, XRF and Raman. The Reflectance spectra database [19] is already available for download. This paper presents the new Raman database and discusses the results.

The goals of the "Pigments Checker Free Spectra Database" are:

1. Define a standard set of historical and modern pigments. All of the Raman databases introduced so far have been collected on samples of different origins. Some pigments belong to collections owned by some institutions, others are manufactured by companies specialized in historical pigments, while others are minerals collected over different geographical locations. Such a variety implies that the pigments' chemical composition could be different due to a number of factors. For example, mineral pigments usually have specific impurities related to different origins and artificial pigments can have been produced with slightly different formulations, as often happened across their history. Pigments Checker provides a standard set of historical pigments that can be used by researchers and art professionals across different institutions and geographical locations to evaluate and practice their diagnostic methods.

2. Provide a complete characterization of Pigments Checker's samples. The set of Reflectance, Raman and XRF spectra will provide deep understanding of the chemical composition of the set of standard pigments and will allow to confirm their composition.

3. Test different wavelength excitations. Pigments have been tested with 3 lasers and the database shows how each pigment responds to the 3 excitations. This information is useful to inform an actual analysis of the pigments on works of art.

2. MATERIALS AND METHODS

Pigments

Raman spectra were collected on the 54 pigments in Pigments Checker v.2 and on 4 pigments that have been added to v. 3. The 58 pigments are listed in Table 1.

Raman spectroscopy

The samples were analyzed in powder by means of the Xplora (Horiba) spectrometer (spectral resolution 2 cm^{-1}) equipped with 532, 638 and 785 nm lasers and an Olympus microscope (spatial resolution $2\text{ }\mu\text{m}$) using an Olympus objective 50X (N.A= 0.75). All the spectra were acquired in the spectral range $100\text{-}3200\text{ cm}^{-1}$ with all the 3 laser excitations. The excitation power was chosen depending on the wavelength used and the analyzed pigment, starting from very low values and increasing it gradually where possible. Time and accumulations were optimized for each sample. Calibration was performed using a Si wafer and a linear baseline was subtracted by means of the LabSpec6 software.

When the pigments are applied with a binder and a varnish, their identification becomes much more difficult than that achieved on pure powder samples, as done for this database. Indeed, these organic materials generate a strong fluorescence emission which covers the weak Raman peaks emitted by the pigments and often even the stronger ones, making it impossible their identification. However, it is possible to improve the signal-to-noise ratio by using a specific excitation wavelength which weakens the fluorescence emission or increase the Raman signal. The most effective wavelength depends on each combination of pigments and binders.

There are some Raman databases which report the spectra of the powder pigments acquired with different lasers [7, 8, 16] and it was also compiled a database of a collection of 99 pigments applied with different painting binders (fresco, egg tempera, casein tempera and linseed oil) and with 3 different excitation wavelengths [20]. That study showed that a Raman system equipped with three lasers (532, 638 and 785 nm), allows the characterization of a larger number of pigments than it is possible with two or only one laser. Since the choice of the excitation wavelength is too pivotal to the success of a Raman examination, our database provides the spectra of each pigment acquired with the 3 most used lasers in Raman spectroscopy, 532, 638 and 785 nm.

3. RESULTS AND DISCUSSION

Pigments have been tested as dry powder. In this section the Raman spectra of the 58 pigments are discussed and compared with information in the literature regarding each pigment in order to evaluate how each one complies with the expected chemical composition. It was also acquired the spectrum of the gum arabic used as a binder for the swatches in Pigments Checker v.2. It shows only a broadband at 2930 cm^{-1} , as previously found with FT-Raman [8]. This information is provided since it is necessary when the Pigments Checker swatches are analyzed by other users so they know what the contribution of the binder would be in their Raman spectra.

Table 2 shows a qualitative evaluation of the efficacy of each laser to identify the pigments. The 532 nm excitation laser is the most useful since it allows the characterization of 34 pigments, while excitation with the 785 nm laser permits to gather spectra only from 25 pigments. The 638 nm laser is the less effective allowing the identification of only 14 pigments. Table 2 summarizes which excitation provided the best spectrum for each pigment. Fig.2 shows as an example, the spectra of Prussian blue acquired with the 3 lasers. The 532 nm excitation easily allows the identification of the pigment thanks to the peaks at 272, 528, 946, 1865, 2094, 2157 and 2431 cm^{-1} [7]. The same signals in a noisy spectrum can be read when the 638 nm laser is used, whilst that obtained with the 785nm laser is of difficult interpretation.

Among the 58 pigments only 2: madder lake and yellow lake reseda did not provide any peaks. Indeed, we did not expect any signals with our system since, to overcome fluorescence, a far infrared excitation is required (see for example the results obtained on lakes [8, 21]).

Black pigments

The Raman spectrum of amorphous carbon is characterized by broad bands around 1350 (D band) and 1550 (G band) cm^{-1} with a large variability in the actual positions of these two signals [22]. All the four black pigments show these two bands and confirm to be carbon-based (fig 3).

Green pigments

Cobalt titanate green is a solid salts solution and the variation in manufacturing processes and composition is reflected in a slight variability in its spectra. It is characterized by its strongest peak centered at about 712 cm^{-1} and assigned to the symmetric stretching mode of CoO_6 in Co_2TiO_4 [23].

Viridian's spectrum reveals peaks of chromium oxide hydrate (262, 487, 584 cm^{-1}) [24]. Malachite shows its four fundamental modes and OH stretching modes at 534, 430, 270 and 219 cm^{-1} [25]. Cadmium green is a mixture of barium sulfate, cadmium yellow and phthalocyanine blue but its Raman spectrum can reveal just the numerous peaks of the blue component. Verdigris is characterized by its $\nu(\text{CuO})$ (228 and 318 cm^{-1}) and $\nu(\text{CC})$ (950 cm^{-1}) bands. Chrome green proved to be a real chrome (III) oxide with bands around 340, 538 and 595 cm^{-1} and not the intimate mixture of chrome yellow and prussian blue, which is often called with the same name [26]. Phthalo green is a modern pigment whose numerous peaks are in accordance with literature [27]. In the green earth the Raman peaks at 180, 275, 556 and 667 cm^{-1} indicate celadonite, its main mineral component.

Red pigments

The red organic colors are the most challenging to be analyzed with our system. Notwithstanding, lac dye and carmine lake, both from scale insects, provided peaks comparable to those collected with a 1064 excitation laser [21]. No signal could be instead detected for madder lake. Alizarin (organic synthetic monoazo, naphthol) spectrum shows numerous characterizing peaks among which 1290, 1365, and 1585 cm^{-1} [28]. Vermilion has its strong peaks at 252, 283 and 343 cm^{-1} [29]. The natural red ochre sample features the weak narrow doublet at 225 and 290 cm^{-1} of haematite. For red lead the acquisitions gave useful results with the red and near-infrared exciting wavelengths, which gave the red lead spectrum according to literature with its characterizing peaks at 120, 148, 225, 388, and 548 cm^{-1} [7, 30]. On the other hand, the spectrum with the green excitation laser highlights that a transformation occurs in the pigment even if it does not show any burning or colour change under visual inspection with the microscope. This degradation process is a well known phenomenon [31]. Using the green laser, a spectrum from red lead was obtained only with an excitation power higher than 1,5 mW which already causes the degradation. The spectrum of the altered red lead is provided in the database since it is useful for its identification when the examination has to be performed with a green laser excitation (Fig.4).

For cadmium red, the only useful Raman spectrum was obtained with the 638 nm laser and its spectrum (136, 200, 296, 361, 488 and 587 cm^{-1}) is in accordance with literature [32] with no trace of the maximum at 988 cm^{-1} due to the barium sulfate filler found in other samples [8].

Brown pigments

For van dyke brown and bitumen it was possible to see the broad bands around 1350 (D band) and 1550 (G band) cm^{-1} [22] with the 532 nm laser. Raw umber shows peaks of hydrated ferric oxide at 304 and 400, and a band at 640 cm^{-1} that can be attributed to black MnO_2 [33]. Burnt umber shows a signals at 590 cm^{-1} resulting from MnO_2 and

the increased presence of anhydrous ferric oxide. As expected [33] raw sienna's spectrum resembles that of limonite, the yellow mineral of yellow ochre (peaks at 238, 300, 391, 477, 555, 681 cm^{-1}) while burnt sienna, due to the calcination of the pigment, has peaks of anhydrous iron oxides (224, 290, 406 cm^{-1}) (fig.5).

White pigments

White pigments are the most easy to identify and their spectra obtained with the 532 nm excitation are shown in figure 6. Chalk is calcium carbonate (154, 278, 1086 cm^{-1}) [7] while gypsum is hydrated calcium sulfate (181, 415, 493, 617, 670, 1008, 1134 cm^{-1}) [7]. Zinc white has its characterizing peaks at 330, 381 and 435 cm^{-1} [7]. Titanium white shows peaks of its two crystal forms of titanium oxide, anatase (143 cm^{-1}) and rutile (450, 615 cm^{-1}) [34, 35]. Lithopone is a mixture of zinc sulfide (peaks at 215 and 278 cm^{-1}) and barium sulfate (peaks at 454, 460, 988 cm^{-1}) [16]. Lead white shows peaks of its main component, hydrocerussite (965, 1050, 1372 cm^{-1}) [16].

Blue pigments

Four blue pigments and one violet are based on cobalt: cobalt cerulean blue has its characterizing peaks at 495, 533, 670 cm^{-1} (excitation 785nm) [7]; cobalt blue is identified (excitation at 532 nm) by its 2 peaks at 202 and 514 cm^{-1} [36, 37] while cerulean blue (cobalt chromite) by its peaks (excitation 532 nm) at 510 and 626 cm^{-1} [28]; the same cobalt violet pigment in Pigments Checker has been thoroughly characterized with XRD and FT-IR [32] and has a characterizing peak at 953 cm^{-1} ; finally, the smalt's signals shows the glass bands - this pigment being made of glass - centered at 550 and 1093 cm^{-1} . Concerning ultramarine blue, the pigment results heterogeneous, mostly blue, with white and brown spots. The acquisitions on the blue parts gave better results for the analysis carried out with the resonant green laser. It is well known that, if a resonant wavelength is used, it is easy to obtain a resonant Raman spectrum of lazurite blue chromophores S_3^- (260 and 285 cm^{-1} (bending), 548 cm^{-1} (stretching)) and S_2^- (583 cm^{-1}) radical ions. The shoulders at ca. 285 and 583 cm^{-1} may be due to asymmetric bending and stretching modes; the Raman spectrum also shows harmonics (548 x 2 = 1096, 548 x 3 = 1644 cm^{-1} , etc.) and combinations (260 + 548 = 808 cm^{-1} , etc.), characteristic of the Raman resonance phenomenon. The analyses on the white and brown areas highlight the presence of diopside (136, 323, 390, 665, 1009 cm^{-1}) and hematite (217, 288, 401, 1330 cm^{-1}) respectively, other two minerals present in the rock lapis lazuli together with the blue lazurite (fig.7). Indigo is revealed by the 532 nm laser with peaks at 248, 547, 599, 1310, 1572, 1584 cm^{-1} [7] and Maya blue, made of indigo inserted in a silicic matrix, is unambiguously identified by its numerous peaks with the 532 nm excitation 548, 599, 668, 755, 1104, 1149, 1251, 1318, 1362, 1463, 1493, 1576 cm^{-1} [38]. Egyptian blue has 4 characterizing peaks, 375, 430, 475 and 1084 cm^{-1} [7]. Phthalocyanine blue has numerous peaks, among the strongest: 590, 680, 1451 and 1527 cm^{-1} [8]. Strong peaks at 2094 and 2154 cm^{-1} identify prussian blue [7]. Excitation at 532 nm reveals the peaks of azurite at 247, 399, 762, 834, 1094, 1429, 1577 cm^{-1} and signals in similar positions are found for blue bice, the artificial form of azurite.

Yellow pigments

Among the organic yellow colorants, the best results were obtained for gamboge which shows peaks (excitation at 785 nm) at 1250, 1437, 1594, 1637 cm^{-1} [7]; saffron (curcuma longa root extract) does show its characteristic strong peaks at 1604 and 1630 cm^{-1} attributed to the benzene ring [39]. Whilst, as expected, yellow lake reseda did not provide any peaks with our dispersive Raman system. Concerning inorganic pigments, three of the lead-based compounds: Naples yellow, lead tin yellow I and lead tin yellow II have very similar spectra (fig.8), especially for the maximum at around 135 cm^{-1} , but they can be distinguished for the minor signals with all the 3 lasers [7]. Also massicot, lead oxide, is clearly identifiable with all the 3 excitations thanks to its signals at 145, 287 and 383 cm^{-1} [7]. Realgar and Orpiment, both arsenic sulfides, respectively As_4S_4 and As_4S_6 , can be easily distinguished: the former has characterizing peaks (excitation at 785 nm) at 145, 172, 185, 192, 224, 237, 345 cm^{-1} [40], the latter is identified by all the excitations with the bands at 134, 150, 178, 200, 288, 308, 353 cm^{-1} [40]. Cadmium yellow is

identified by its two peaks at 309 and 615 cm^{-1} (excitation 532 nm) [41]. Cobalt yellow has (excitation 532 nm) characterizing peaks at 179, 266, 296, 820, 835, 1325 cm^{-1} [7]. Chrome yellow shows its peaks (excitation 638 nm) at 336, 355, 372 and 401 cm^{-1} [7]. In the case of yellow ochre, the hydrated iron oxide (limonite) accounts for the bands at 205, 247, 300, 400, 487, 557, 681 cm^{-1} [33].

4. CONCLUSIONS

This work provided the Raman spectroscopic characterization of the 58 pigments used in Pigments Checker. Only 2 pigments (madder lake and yellow lake reseda) did not provide any peaks, as it was expected for the used Raman dispersive system. The composition of the pigments was discussed and compared with known standards in literature and all the samples were found compatible with the compositions declared by the manufacturers.

This study contributes to the “Pigments Checker Free Spectra Database” project for the definition of a standard set of historical pigments for research and scientific education related to art conservation.

References

1. H. Edwards, J.M. Chalmers, *Raman Spectroscopy in Archaeology and Art History*, RSC Analytical Spectroscopy Series, The Royal Society of Chemistry, London, 2005.
2. A. Cosentino, S. Stout, C. Scandurra, Innovative Imaging Techniques for Examination and Documentation of mural paintings and historical graffiti in the catacombs of San Giovanni, Syracuse, *International Journal of Conservation Science* 6(1) (2015) 23-34.
3. V.R. Bom, A. Cosentino, M. Seracini, R. Rosa, Neutron back scattering for the search of the Battle of Anghiari, *Applied Radiation and Isotopes* 68 (2010) 66–70.
4. A. Cosentino, Identification of pigments by multispectral imaging; a flowchart method, *Heritage Science* 2:8 (2014). DOI: 10.1186/2050-7445-2-8.
5. A. Cosentino A., Terahertz and Cultural Heritage Science Examination of Art and Archaeology, *Technologies* 4 6 (2016). doi:10.3390/technologies4010006.
6. A. Cosentino, Panoramic, Macro and Micro Multispectral Imaging: An Affordable System for Mapping Pigments on Artworks, *Journal of Conservation and Museum Studies* 13(1) 6 (2015) 1–17.
7. I.M. Bell, R.J.K. Clark, P.J. Gibbs, Raman Spectroscopic Library of Natural and Synthetic Pigments (pre- ~1850 AD), *Spectrochimica Acta A* 53A (1997) 2159-2179.
8. L. Burgio, R.J.H. Clark, Library of FT-Raman spectra of pigments, minerals, pigment media and varnishes, and supplement to existing library of Raman spectra of pigments with visible excitation, *Spectrochim. Acta A* 57 (2001) 1491-1521.
9. P. Vandenabeele, L. Moens, H.G.M. Edwards, R. Dams, Raman spectroscopic database of Azopigments and application to modern art studies, *Journal of Raman Spectroscopy* 31 (6) (2000) 509-517.
10. M. Bouchard, D.C. Smith, Catalogue of 45 Reference Raman Spectra of Minerals Concerning Research in Art History or Archaeology, Especially on Corroded Metals and Coloured Glass, *Spectrochimica Acta Part A: Molecular and Biomolecular Spectroscopy* 59 10 (2003) 2247 – 2266. doi:http://dx.doi.org/10.1016/S1386-1425(03)00069-6.
11. F. Pozzi, J.R. Lombardi, M. Leona, Winsor & Newton original handbooks: a surface-enhanced Raman scattering (SERS) and Raman spectral database of dyes from modern watercolor pigments, *Heritage Science* (2013) 1:23.
12. <http://www.chem.ucl.ac.uk/resources/raman/> (accessed 24.03.2016).
13. <http://www.irug.org/> (accessed 24.03.2016).
14. K. Castro, M. Pérez-Alonso, M.D. Rodríguez-Laso, L.A. Fernández, J.M. Madariaga, On-Line FT-Raman and Dispersive Raman Spectra Database of Artists' Materials (e-VISART Database), *Analytical and Bioanalytical Chemistry* 382 2 (2005) 248–58. doi:10.1007/s00216-005-3072-0.
15. <http://rdrs.uaic.ro/index.html> (accessed 24.03.2016).
16. B. Lafuente, R.T. Downs, H. Yang, N. Stone, The power of databases: the RRUFF project. In: *Highlights in Mineralogical Crystallography*, T Armbruster and R M Danisi, eds. Berlin, Germany, W. De Gruyter, 2015, pp 1-30.
17. <https://www.fis.unipr.it/phevix/ramandb.php> (accessed 24.03.2016).
18. <http://chsopensource.org/tools-2/pigments-checker/> (accessed 24.03.2016).

19. A. Cosentino, FORS spectral database of historical pigments in different binders, *e-conservation Journal* 2 (2014) 57-68.
20. G. Burrafato, M. Calabrese, A. Cosentino, A.M. Gueli, S.O. Troja, A. Zuccarello, ColoRaman project: Raman and fluorescence spectroscopy of oil, tempera and fresco paint pigments, *Journal of Raman Spectroscopy* 35 (2004) 879-886.
21. C.M. Schmidt, K.A. Trentelman, 1064 dispersive Raman micro-spectroscopy for the in situ identification of organic red colorants, *e-Preserv. Sci.* 6 (2009) 10–21.
22. E.P. Tomasini, E.B. Halac, M. Reinoso, E.J. Di Liscia, M.S. Maier, Micro-Raman Spectroscopy of Carbon-Based Black Pigments, *Journal of Raman Spectroscopy* 43 11 (2012) 1671–75. doi:10.1002/jrs.4159.
23. F. Casadio, A. Bezúr, I. Fiedler, K. Muir, T. Trad, S. Maccagnola, Pablo Picasso to Jasper Johns: A Raman Study of Cobalt-Based Synthetic Inorganic Pigments, *Journal of Raman Spectroscopy* 43 11 (2012) 1761–71. doi:10.1002/jrs.4081.
24. S. Zumbuehl, N.C. Scherrer, A. Berger, U. Eggenberger, Early Viridian Pigment Composition. Characterization of a (hydrated) chromium oxide borate pigment, *Studies in Conservation*, 54 3 (2009) 149-159.
25. N. Buzgar, A. Buzatu, A. Apopei, V. Cotiugă, In Situ Raman Spectroscopy at the Voroneț Monastery (16th Century, Romania): New Results for Green and Blue Pigments, *Vibrational Spectroscopy* 72 (2014) 142 – 148. doi:http://dx.doi.org/10.1016/j.vibspec.2014.03.008.
26. D.A. Brown, D. Cunningham, W.K. Glass, The Infrared and Raman Spectra of Chromium (III) Oxide.” *Spectrochimica Acta Part A: Molecular Spectroscopy* 24 8 (1968) 965 – 968. doi:http://dx.doi.org/10.1016/0584-8539(68)80115-1.
27. N. Marchettini, A. Atrei, F. Benetti, N. Proietti, V. Di Tullio, M. Mascalchi, I. Osticioli, S. Siano, I. Turbanti Memmi, Non-Destructive Characterisation of Fourteenth Century Painting by Means of Molecular Spectroscopy and Unilateral NMR, *Surface Engineering* 29 2 (2013) 153–58.
- 28 F. Schulte, K. Brzezinka, K. Lutzenberger, H. Stege, U. Panne, Raman Spectroscopy of Synthetic Organic Pigments Used in 20th Century Works of Art, *Journal of Raman Spectroscopy* 39 10 (2008) 1455–63. doi:10.1002/jrs.2021.
29. D. Mancini, A. Tournié, M.C. Caggiani, P. Colomban, Testing of Raman Spectroscopy as a Non-Invasive Tool for the Investigation of Glass-Protected Miniature Portraits, *Journal of Raman Spectroscopy* 43 2 (2012) 294–302. doi:10.1002/jrs.3010.
30. C. Miguel, A. Claro, A. Pereira Gonçalves, V.S.F. Muralha, M.J. Melo, A Study on Red Lead Degradation in a Medieval Manuscript *Lorvão Apocalypse* (1189), *Journal of Raman Spectroscopy* 40 12 (2009) 1966–73. doi:10.1002/jrs.2350.
31. M.C. Caggiani, Ph. Colomban, Testing of Raman spectroscopy as a non-invasive tool for the investigation of glass-protected pastels, *J. Raman Spectrosc.* 42 4 (2011) 790-798.
- 32 C.L. Aibéo, S. Goffin, O. Schalm, G. van der Snickt, N. Laquière, P. Eyskens, K. Janssens, Micro-Raman Analysis for the Identification of Pigments from 19th and 20th Century Paintings, *Journal of Raman Spectroscopy* 39 8 (2008) 1091–98. doi:10.1002/jrs.1990.
33. D. Bikiaris, Sister Daniilia, S. Sotiropoulou, O. Katsimbiri, E. Pavlidou, A. P. Moutsatsou, Y. Chryssoulakis, Ochre-Differentiation through Micro-Raman and Micro-FTIR Spectroscopies: Application on Wall Paintings at Meteora and Mount Athos, Greece, *Spectrochimica Acta Part A: Molecular and Biomolecular Spectroscopy* 56 1 (2000) 3 – 18. doi:http://dx.doi.org/10.1016/S1386-1425(99)00134-1.

34. J. Zieba-Palus, R. Borusiewicz, Examination of multilayer paint coats by the use of infrared, Raman and XRF spectroscopy for forensic purposes, *Journal of Molecular Structure* 792-793 (2006) 286-292.
35. P. C. Ricci, C. M. Carbonaro, L. Stagi, M. Salis, A. Casu, S. Enzo, F. Delogu, Anatase-to-rutile phase transition in TiO₂ nanoparticles irradiated by visible light, *The Journal of Physical Chemistry C* 117 15 (2013) 7850-7857.
36. M. Bouchard, A. Gambardella, Raman Microscopy Study of Synthetic Cobalt Blue Spinel Used in the Field of Art, *Journal of Raman Spectroscopy* 41 11 (2010) 1477–85. doi:10.1002/jrs.2645.
37. A. Roy, “Cobalt blue” in “Artists’ Pigments, volume 4” B.H. Berrie (editor), National Gallery of Art, Washington, Archetype Publications, London, 2007.
38. M.C. Caggiani, P. Acquafredda, P. Colombari, A. Mangone, The source of blue colour of archaeological glass and glazes: the Raman spectroscopy/ SEM-EDS answers, *Journal of Raman Spectroscopy* 45 11-12 (2014) 1251-1259.
39. S. Hartwig M. Baranska, Identification and Quantification of Valuable Plant Substances by {IR} and Raman Spectroscopy, *Vibrational Spectroscopy* 43 1 (2007) 13–25. doi:http://dx.doi.org/10.1016/j.vibspec.2006.06.001.
40. R. Forneris, The Infrared and Raman Spectra of Realgar and Orpiment, *American Mineralogist* 54 (1969) 1062-1074.
41. F. Rosi, C. Grazia, F. Gabrieli, A. Romani, M. Paolantoni, R. Vivani, B.G. Brunetti, P. Colombari, C. Miliani, UV–Vis-NIR and Micro Raman Spectroscopies for the Non Destructive Identification of Cd_{1-x}Zn_xS Solid Solutions in Cadmium Yellow Pigments, *Microchemical Journal* 124 (2016) 856 – 867. doi:http://dx.doi.org/10.1016/j.microc.2015.07.025.
42. T.D. Chaplin, R.J.H. Clark, D.A. Scott, “Study by Raman microscopy of nine variants of the green–blue pigment verdigris” *J. Raman Spectrosc.* 2006, 37, 223.
43. M. San Andrés, J.M. de la Roy, V.G. Baonza, N. Sancho, Verdigris pigment: a mixture of compounds. Input from Raman spectroscopy, *J. Raman Spectrosc.* 41 (2010) 1468-1476.
44. C. Conti, J. Striova, I. Aliatis, E. Possenti, G. Massonnet, C. Muehlethaler, T. Poli, M. Positano, The Detection of Copper Resinate Pigment in Works of Art: Contribution from Raman Spectroscopy, *Journal of Raman Spectroscopy* 45 11–12 (2014) 1186–96. doi:10.1002/jrs.4455.
45. A.M. Correia, R.J.H. Clark, M.I.M. Ribeiro, M.L.T.S. Duarte, Pigment Study by Raman Microscopy of 23 Paintings by the Portuguese Artist Henrique Pousão (1859–1884), *Journal of Raman Spectroscopy* 38 11 (2007) 1390–1405. doi:10.1002/jrs.1786.
46. I. Aliatis, D. Bersani, E. Campani, A. Casoli, P.P. Lottici, S. Mantovan, I. Marino, F. Ospitali, Green Pigments of the Pompeian Artists’ Palette, *Spectrochimica Acta Part A: Molecular and Biomolecular Spectroscopy* 73 3 (2009) 532–38.
47. F. Ospitali, D. Bersani, G. Di Lonardo, P.P. Lottici, Green Earths’: Vibrational and Elemental Characterization of Glauconites, Celadonites and Historical Pigments, *Journal of Raman Spectroscopy* 39 8 (2008) 1066–73. doi:10.1002/jrs.1983.
48. B. Guineau, Non-destructive Analysis of Organic Pigments and Dyes Using Raman Microprobe, Microfluorometer, or Absorption Microspectrophotometer, *Studies in Conservation* 34 (1989) 38-44.
49. A.V. Whitney, R.P. Van Duyne, F. Casadio, An Innovative Surface-Enhanced Raman Spectroscopy (SERS) Method for the Identification of Six Historical Red Lakes and Dyestuffs, *Journal of Raman Spectroscopy* 37 10 (2006) 993–1002. doi:10.1002/jrs.1576.

50. F. Froment, A. Tournié, P. Colomban, Raman identification of natural red to yellow pigments: ochre and iron-containing ores. *J. Raman Spectrosc.* 39 (2008) 560–568. doi: 10.1002/jrs.1858.
51. R.J. Gettens, H. Kuhn, W.T. Chase “Lead white” in *Artists' Pigments: A Handbook of Their History and Characteristics*, Volume 2, National Gallery of Art, Washington, eds. Ashok Roy, 1993.
52. M. Leona, F. Casadio, M. Bacci, M. Picollo, Identification of the pre-Columbian pigment Maya blue on works of art by non-invasive UV-Vis and Raman spectroscopic techniques, *Journal of the American Institute for Conservation* 43 (2004) 39-54.
53. M. Bouchard, R. Rivenc, C. Menke, T. Learner, Micro-FTIR and micro-Raman study of paints used by Sam Francis, *e-PS* 6 (2009) 27-37.
54. C.I. Bothe, “Asphalt” in “*Artists' Pigments*, volume 4” B.H. Berrie (editor), National Gallery of Art, Washington, Archetype Publications, London, 2007.

Funding Body

None

Figures

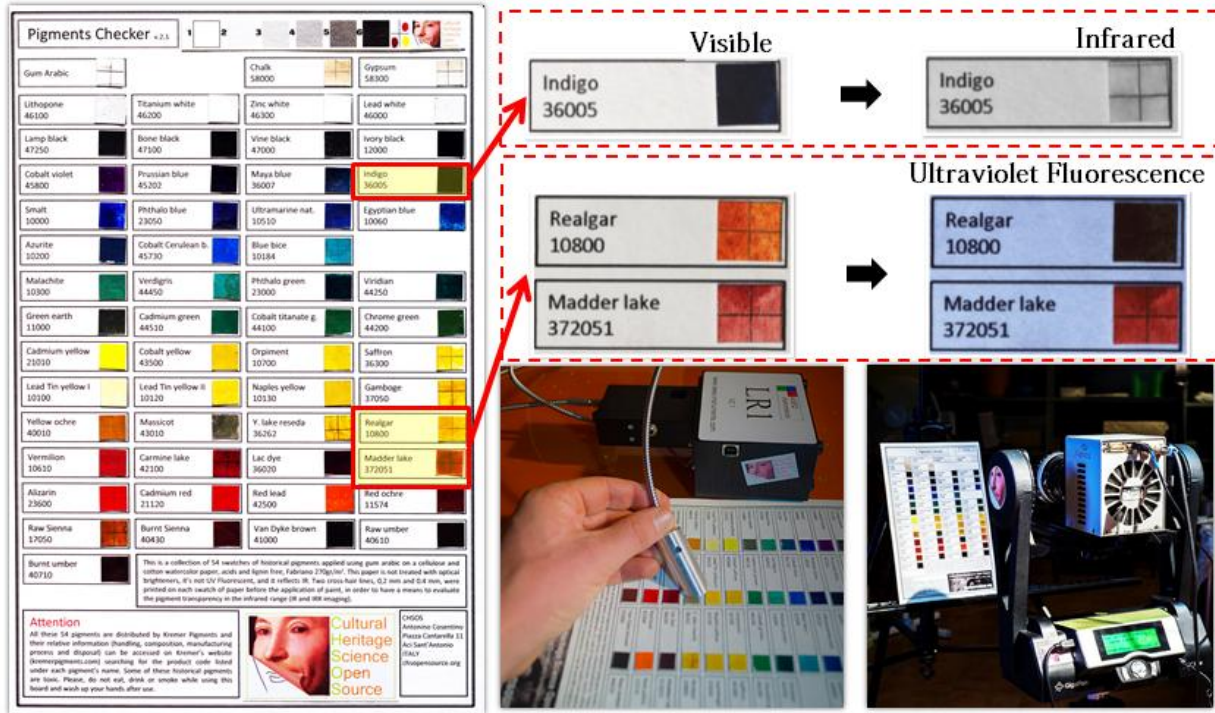


Fig. 1. Pigments Checker is a tool to evaluate and practice imaging and spectroscopic methods for pigments identification.

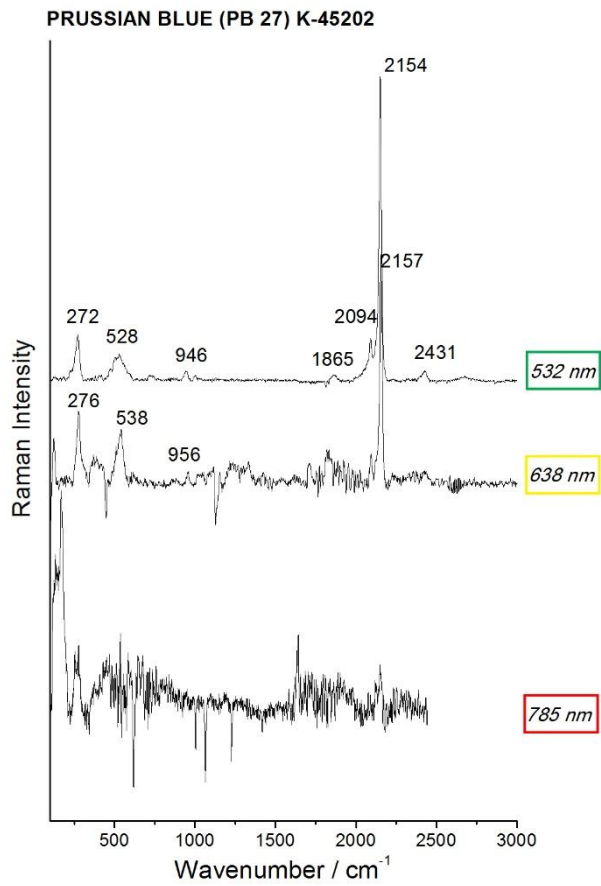


Fig.2: baseline subtracted Raman spectra of the Prussian Blue (PB27) K-45202 standard acquired with the 532, 638 and 785 nm lasers. The color code is that followed in table 2: green for the best spectrum, yellow for a noisy one, while red for a spectrum difficult to be interpreted or no spectrum at all.

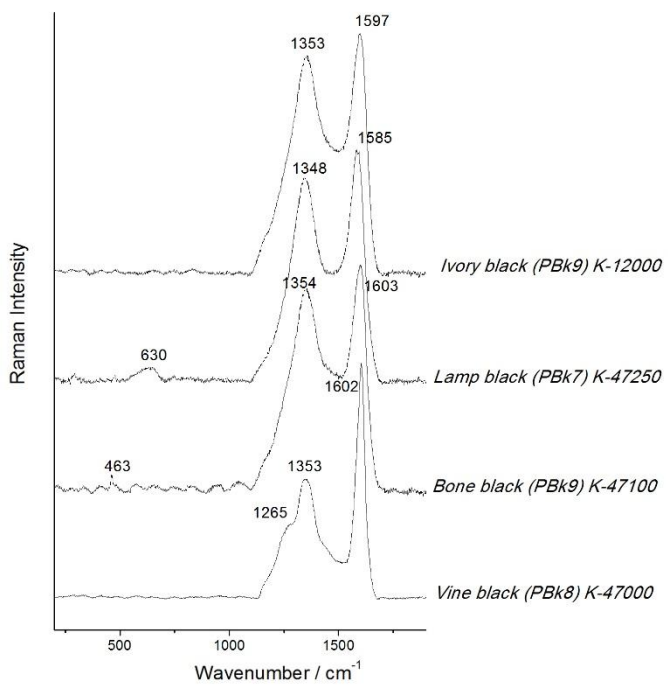


Fig.3: baseline subtracted Raman spectra of the four black carbon-based pigments showing the characterizing amorphous carbon D and G bands, acquired with the 532 nm excitation wavelength.

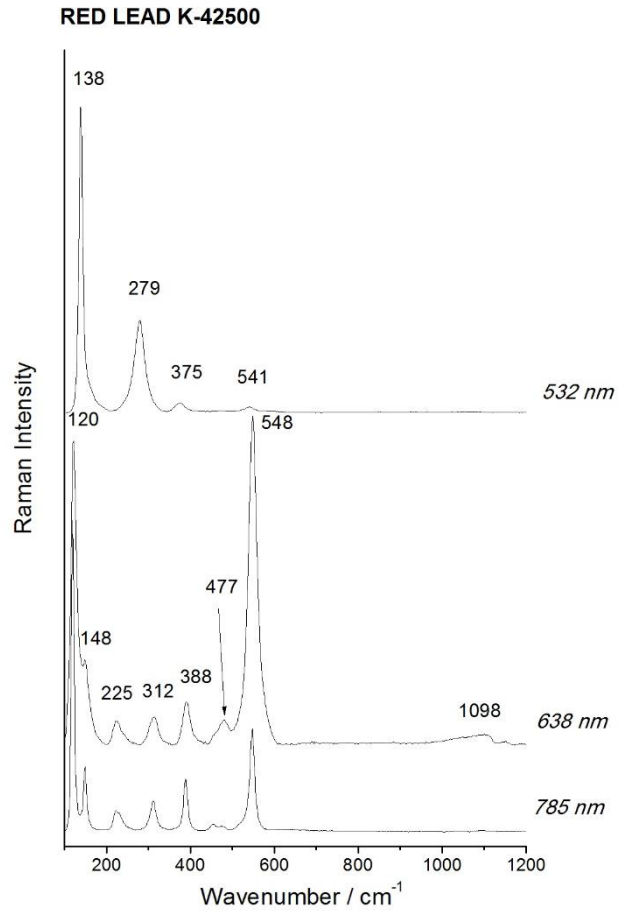


Fig.4: baseline subtracted Raman spectra of the Red Lead K-42500 standard acquired with the three lasers. The different spectrum obtained with the green, 532 nm, excitation must be noted.

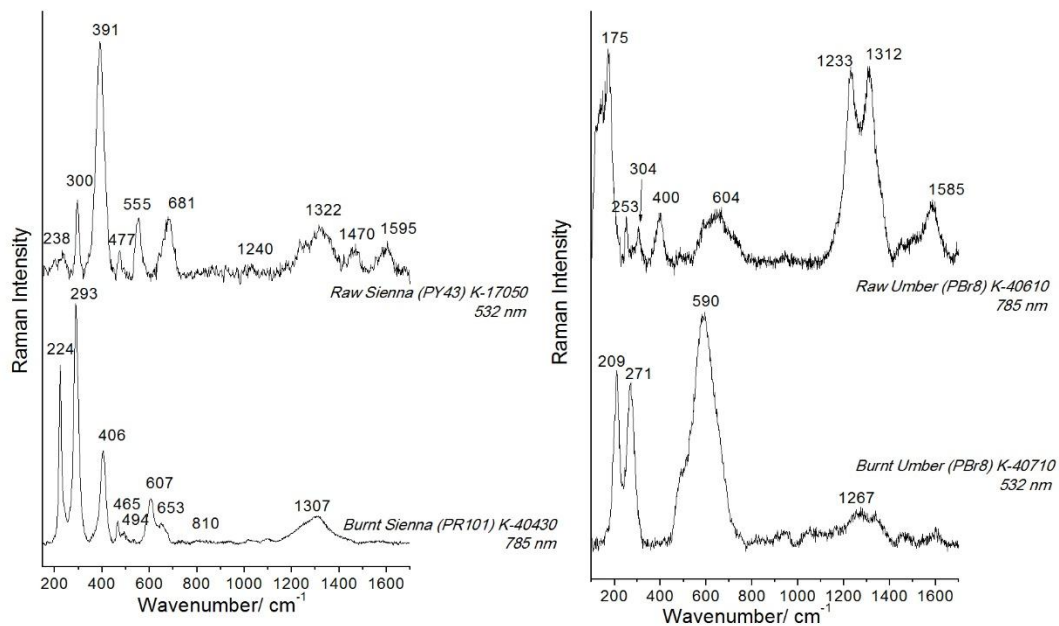


Fig.5: baseline subtracted Raman spectra of the Raw and Burnt Sienna and Umber pigments and the respective lasers used to obtain the best spectra.

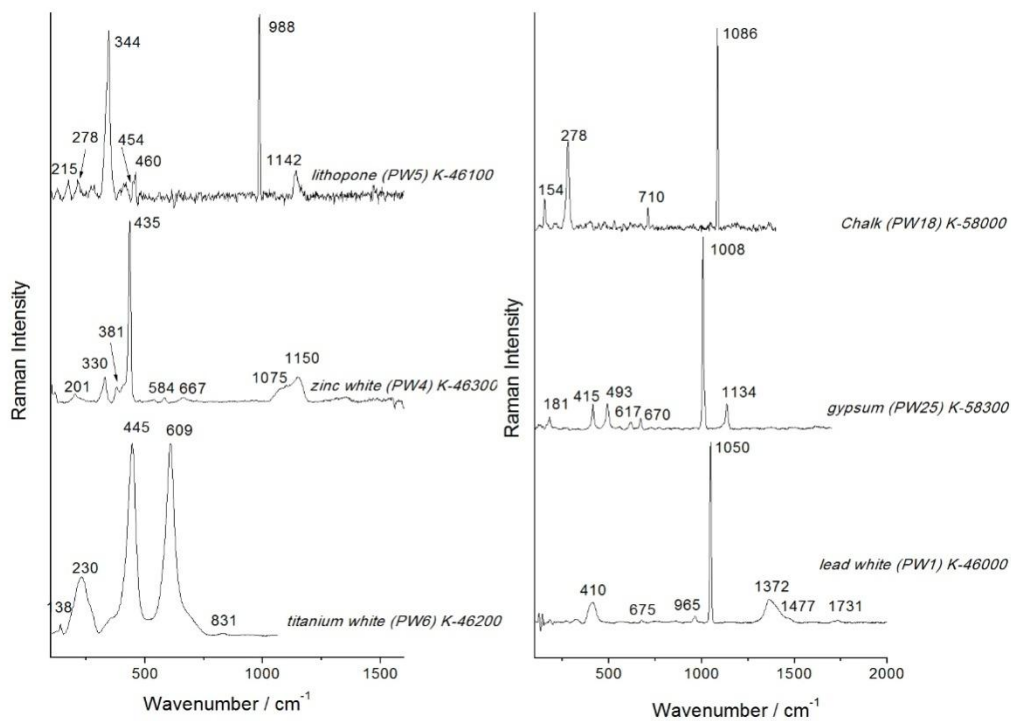


Fig.6: baseline subtracted Raman spectra of the white pigments (lithopone, zinc white, titanium white, chalk, gypsum and lead white) acquired with the 532 nm laser.

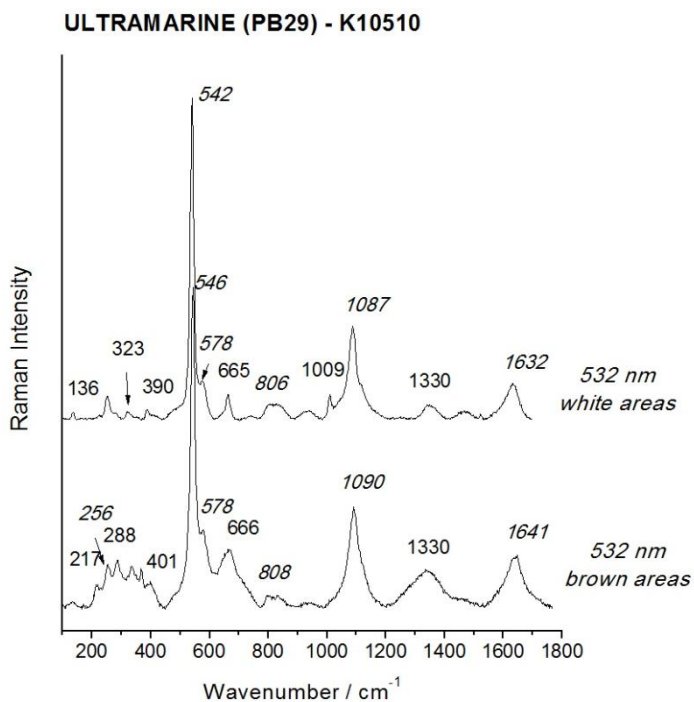


Fig.7: baseline subtracted Raman spectra acquired with the 532 nm laser on the white and brown areas found within the blue pigment Ultramarine (picks in italics), revealing respectively the presence of diopside (signals at 136, 323, 390, 665 and 1009 cm^{-1}) and hematite (signals at 217, 288, 401, 666, 1330 cm^{-1}).

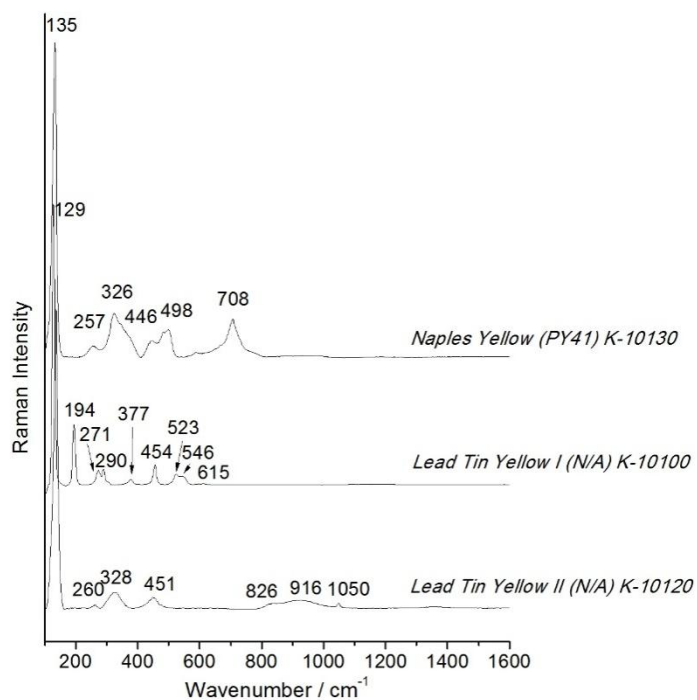


Fig.8: baseline subtracted Raman spectra of the lead-based yellow pigments: Naples Yellow, Lead Tin Yellow I and Lead Tin Yellow II, acquired with the 532 nm laser.

Tables

Table 1. *Pigments Checker. Name (product name, color index, product code), chemical name, Raman peaks, references. Pigments have been tested with all the 3 laser excitations and when one or more lasers were successful to provide peaks they are reported in the table. Suffix to the product code K, C, or Z indicate respectively Kremer, Cornelissen and Zecchi, pigments sellers.*

Name / product code	Composition	Principal Raman signals [cm ⁻¹]	Ref.
BLACK			
vine black (PBk8) K-47000	amorphous C	532 nm: 1265, 1353, 1602	22
		638 nm: 1265, 1353, 1514, 1602	
		785 nm: 1265, 1340, 1593	
lamp black (PBk7) K-47250	amorphous C	532 nm: 630, 1348, 1585	7, 22
		638 nm: 1333, 1598	
ivory black (PBk9) K-12000	amorphous C	532 nm: 1353, 1597	7, 22,
		638 nm: 1344, 1514, 1602	
		785 nm: 1348, 1496, 1585	
bone black (PBk9) K-47100	amorphous C	532 nm: 463, 1354, 1603	22
		638 nm: 1336, 1515, 1603	
		785 nm: 463, 1331, 1594	
GREEN			
cobalt titanate green. K-44100	cobalt titanate green spinel	532 nm: 118, 173, 340, 480, 530, 712, 984, 1400	23
		638 nm: 174, 705, 979, 1400	
		785 nm: 118, 173, 237, 338, 480, 530, 547, 608, 712, 984, 1400	
viridian K-44250	hydrated chromium oxide	532 nm: 262, 487, 584, 618	7, 24
malachite K-10300	basic copper(II) carbonate	532 nm: 153, 178, 219, 270, 350, 430, 508, 534, 564, 596, 717, 749, 1059, 1096, 1368, 1460, 1494	7, 16, 25
cadmium green K-44510	barium sulfate, cadmium yellow, phthalocyanine blue	532 nm: 231, 255, 598, 680, 842, 951, 1034, 1138, 1341, 1447, 1527, 1590, 2672, 2870, 2974, 3056	
		638 nm: 480, 588, 675, 747, 838, 951, 1139, 1202, 1335, 1443, 1527, 1610, 2006, 2198, 2265, 2661, 2862, 2966, 3046	
		785 nm: 258, 480, 594, 679, 752, 842, 950, 1143, 1338, 1447, 1526	
verdigris K-44450	copper-(II)-acetate-1- hydrate	532 nm: 180, 228, 318, 477, 630, 702, 945, 1052, 1358, 1418, 1442, 1536, 2431, 2938, 2980, 3022	42-44
chrome oxide green K-44200	chromium(III)-oxide	532 nm: 301, 340, 388, 538, 595, 1355	14, 26
phthalo green K-23000	copper-phthalocyanine	532 nm: 142, 162, 230, 505, 685, 770, 818, 978, 1080, 1200, 1284, 1340, 1388, 1503, 1536	8, 27
		638 nm: 199, 258, 282, 358, 683, 700,	

		738, 775, 817, 975, 1080, 1214, 1292, 1339, 1392, 1443, 1538, 1899, 2825, 2875, 3077	
		785 nm: 176, 350, 688, 744, 784, 1217, 1297, 1347, 1540	
green earth K-11000	glauconite and celadonite	532 nm: 145, 180, 275, 345, 405, 556, 667	45-47
RED			
lac dye K-36020	laccaic acid	638 nm: 367, 412, 454, 478, 661, 800, 967, 1012, 1054, 1102, 1183, 1231, 1318, 1384, 1466, 1579, 1642	21, 48
madder lake C-LC12061A	rubia tinctorum	No signal - fluorescence	8, 21, 48, 49
carmine lake K-42100	carminic acid	532, 785 nm: 1318, 1483	21,48
Alizarin (naphthol red) K-23600	Organic synthetic monoazo. Naphthol;	532 nm: 967, 1062, 1108, 1159, 1230, 1242 1282, 1355, 1372, 1388, 1483, 1580, 1605	28
		785 nm: 153, 198, 253, 304, 353, 395, 433, 445, 474, 533, 577, 621, 686, 733, 754, 819, 901, 975, 1069, 1116, 1166, 1237, 1290, 1365, 1381, 1399, 1466, 1493, 1560, 1585	
vermilion K-10610	mercury sulfide	532, 638, 785 nm: 252, 283, 343	7, 29
cadmium red K-21120	cadmium selenosulfide	638 nm: 136, 200, 296, 361, 488, 587	41
red ochre K-11574	iron oxides	532, 785 nm: 225, 290, 405	7, 33, 50
red lead K-42500	lead(II,IV) oxide	532 nm: 138, 279, 375, 541	7, 31, 10, 30
		638 nm: 120, 148, 225, 312, 388, 477, 548, 1098	
		785 nm: 120, 148, 225, 312, 388, 477, 548	
BROWN			
van dyke brown (NBr8) K-41000	humic acids, iron oxide	532 nm: 1358, 1600	7
burnt umber (PBr8) K-40710	manganese and iron oxides	532 nm: 209, 271, 590, 1267	33
		638 nm: 224, 296, 410, 649, 1227, 1317	
raw umber (PBr8) K-40610	manganese and iron oxides	532 nm: 298, 398, 635	33
		785 nm: 175, 253, 304, 400, 640, 1233, 1312, 1585, 1730	
raw sienna (PY 43) K-17050	iron oxides	532 nm: 238, 300, 391, 477, 555, 681, 1240, 1322, 1470, 1595	33
		638 nm: 238, 300, 395, 477, 555, 681	
		785 nm: 302, 402	
burnt sienna (PR101) K-40430	iron oxides	532 nm: 212, 273, 400, 465	33
		785 nm: 224, 293, 406, 465, 494, 607, 653, 810, 1307	

WHITE			
chalk (PW18) K-58000	calcium carbonate	532 nm: 154, 278, 710, 1086	7, 8, 16
		785 nm: 280, 1088	
zinc white (PW4) K-46300	zinc oxide	532 nm: 201, 330, 381, 435, 584, 667, 1075, 1150	7
gypsum (PW25) K-58300	hydrated calcium sulfate	532 nm: 181, 415, 493, 617, 670, 1008, 1134	7, 16
		785 nm: 1010	
titanium white (PW6) K-46200	titanium dioxide	532 nm: 138, 230, 445, 609, 831	8, 34, 35
		638 nm: 143, 238, 450, 615	
		785 nm: 142, 236, 449, 614	
lithopone (PW5) K-46100	zinc sulfide and barium sulfate	532 nm: 215, 278, 344, 454, 460, 988, 1142	7
		638 nm: 986	
		785 nm: 350, 454, 462, 992, 1145	
lead white (PW1) K-46000	basic lead carbonate	532 nm: 324, 410, 675, 965, 1050, 1372, 1477, 1731, 2847, 2879	7, 16, 51
		785 nm: 325, 413, 678, 969, 1050, 1372	
BLUE			
smalt (PB32) K-10000	cobalt potassium silicate glass	532 nm: 190, 310, 550, 1093	7
cobalt cerulean blue (PB35) K-45730	cobalt stannate	532 nm: 128, 176, 343, 513, 655, 985	7
		785 nm: 132, 183, 254, 350, 419, 458, 495, 533, 621, 670, 990, 1144	
ultramarine nat. (PB29) K-10510	sodium-aluminum-silicate	532, 638 nm: 260, 285, 548, 583, 808, 1096, 1358, 1644, 1904, 2192, 2452, 2740, 3000	7
		785 nm: 364, 548, 583, 808, 1096, 1346	
maya blue (N/A) K-36007	indigo in silicic crystal matrix	532 nm: 250, 547, 599, 668, 755, 945, 1104, 1149, 1251, 1318, 1362, 1463, 1493, 1576	52
		638 nm: 546	
		785 nm: 254, 552, 758, 1317, 1574	
prussian blue (PB27) K-45202	iron-hexacyanoferrate	532 nm: 272, 528, 946, 1865, 2094, 2154, 2431	7
		638 nm: 276, 538, 956, 2157	
azurite (PB30) K-10200	basic copper carbonate	532 nm: 110, 139, 174, 247, 282, 331, 399, 539, 738, 762, 834, 937, 1094, 1422, 1429, 1460, 1577, 1607	7, 16
indigo (NB1) K-36000	indigotin	532 nm: 248, 280, 547, 599, 670, 755, 858, 937, 1009, 1096, 1145, 1249, 1310, 1362, 1460, 1483, 1572, 1584, 1606	8, 48

		785 nm: 254, 266, 279, 312, 547, 599, 675, 758, 1017, 1150, 1252, 1312, 1366, 1465, 1483, 1575, 1584	
egyptian blue (PB31) K-10060	copper calcium silicate	532 nm: 114, 137, 162, 187, 230, 375, 430, 475, 570, 762, 782, 968, 985, 1011, 1084, 1140	7
phthalo blue (PB15) K-23050	copper phthalocyanine	532 nm: 231, 255, 590, 680, 747, 951, 1037, 1143, 1341, 1451, 1527, 1595, 2672, 2870, 2976, 3056	8
		638 nm: 257, 488, 591, 682, 747, 954, 1105, 1140, 1212, 1305, 1341, 1454, 1534, 1612, 2205, 2274, 2670, 2870, 2978, 3056	
		785 nm: 257, 492, 596, 686, 752, 959, 1013, 1148, 1344, 1451, 1527	
cobalt violet (PV14) K-45800	cobalt phosphates	532 nm: 141, 182, 227, 280, 328, 446, 473, 555, 608, 662, 953, 1003	53
		638 nm: 187, 478, 612, 956	
		785 nm: 147, 169, 190, 963, 1014	
blue bice (PB30) K-10184	basic copper carbonate	532 nm: 151, 175, 217, 244, 272, 331, 397, 430, 500, 535, 712, 760, 832, 935, 1045, 1093, 1321, 1363, 1423, 1459, 1492, 1576	
YELLOW			
gamboge (NY24) K-37050	garcinia hanburyi tree	785 nm: 379, 459, 740, 1225, 1250, 1278, 1337, 1387, 1437, 1456, 1594, 1637, 1675, 1740	7
naples yellow (PY41) K-10130	lead antimonate	532 nm: 135, 257, 326, 446, 498, 588, 708	7
		638 nm: 135, 257, 326, 446, 498, 588, 708, 1204, 1258	
		785 nm: 135, 257, 326, 446, 505, 594, 714	
lead tin yellow I (N/A) K-10100	lead stannate	532 nm: 129, 194, 271, 290, 377, 454, 523, 546, 615	7
		638 nm: 129, 194, 271, 290, 377, 454, 523, 546, 615, 1243, 1275	
		785 nm: 131, 198, 271, 290, 377, 454, 523, 546, 615	
cadmium yellow (PY35) K-21010	cadmium zinc sulfide	532 nm: 131, 153, 179, 212, 257, 309, 353, 571, 615	7, 41
		785 nm: 131, 212, 309, 353, 571, 615	
lead tin yellow II (N/A) K-10120	lead and tin oxides	532 nm: 135, 260, 328, 451, 826, 916, 1050	7
		638 nm: 135, 260, 328, 451, 916, 1050	
		785 nm: 139, 260, 328, 916, 1050, 1276	
cobalt yellow (PY40) K-43500	potassium cobaltinitrite	532 nm: 179, 266, 296, 474, 516, 680, 820, 835, 1095, 1237, 1325, 1392, 1798, 2142, 2327, 2431, 2645, 2851, 2938	7, 8
		785 nm: 112, 182, 274, 304, 820, 835, 1257, 1325, 1398, 2147, 2645	
massicot (PY46) K-43010	lead(II)oxide	532, 638, 785 nm: 145, 287, 383	7

yellow ochre (PY43) K-40010	goethite	532, 785 nm: 205, 247, 300, 400, 487, 557, 681, 1332	33, 50
Realgar (PY39) K-10800	arsenic sulfide	532 nm: 182, 194, 224, 237, 270, 345, 355	16, 40
		638 nm: 136, 145, 155, 172, 185, 224, 237, 270, 345, 355	
		785 nm: 136, 145, 155, 172, 186, 192, 224, 237, 270, 345, 355	
orpiment (PY39) K-10700	arsenic sulfide	532, 638, 785 nm: 134, 150, 178, 200, 288, 308, 353, 378, 580, 644	7,16, 40
yellow lake reseda (NY2) K-36262	reseda luteola	No signal - fluorescence	
saffron (curcuma longa) (NY6) K-36300	Curcuma longa root extract	785 nm: 144, 516, 575, 640, 963, 1154, 1167, 1183, 1254, 1272, 1321, 1434, 1604, 1630	39
NEW			
cobalt blue (PB28) Z-C0953	cobalt aluminate	532 nm: 202, 410, 514, 650	36, 37
		785 nm: 204, 252, 410, 514, 616, 700, 762	
cerulean blue (PB36) Z-C0040	cobalt chromite	532 nm: 162, 194, 510, 626, 735	36
		785 nm: 177, 202, 519, 631, 677, 730	
chrome yellow (PY34) C-LC11053F	lead chromate	532 nm: 351, 832	7, 31
		638 nm: 336, 355, 372, 401, 843, 971	
		785 nm: 342, 359, 375, 405, 844, 972	
Bitumen (NBk6) Z-0098	high-molecular hydrocarbons	532 nm: 1355, 1600	22, 54

Table 2. Laser excitation. Green indicates the best spectrum, yellow a noisy one, while red designates a spectrum difficult to interpret or no spectrum at all.

Pigments	532	638	785
Alizarin (naphthol red)	Yellow	Red	Green
Bitumen	Yellow	Red	Red
Azurite	Green	Red	Red
Blue bice	Green	Red	Red
Bone black	Green	Green	Yellow
Burnt sienna	Yellow	Red	Green
Burnt umber	Green	Yellow	Red
Cadmium green	Green	Yellow	Green
Cadmium red	Red	Yellow	Red
Cadmium yellow	Green	Red	Green
Carmine lake	Yellow	Red	Yellow
Chalk	Yellow	Red	Yellow
Chrome oxide green	Green	Red	Red
Chrome yellow	Green	Green	Green
Cobalt blue	Green	Red	Green
Cobalt cerulean blue	Green	Red	Green
Cerulean blue	Green	Red	Yellow
Cobalt titanate green	Green	Yellow	Green
Cobalt violet	Green	Yellow	Yellow
Cobalt yellow	Green	Red	Green
Egyptian blue	Green	Red	Red
Gamboge	Red	Red	Green
Green Earth	Yellow	Red	Red
Gum arabic	Yellow	Red	Red
Gypsum	Green	Red	Yellow
Indigo	Green	Red	Yellow
Ivory black	Green	Green	Yellow
Lac dye	Red	Green	Red
Lamp black	Green	Yellow	Red
Lead tin yellow I	Green	Green	Green
Lead tin yellow II	Green	Green	Green
Lead white	Green	Red	Green
Lithopone	Green	Yellow	Green
Madder lake	Red	Red	Red
Malachite	Green	Red	Red
Massicot	Green	Green	Green
Maya blue	Green	Yellow	Yellow

Naples yellow			
Orpiment			
Phthalo green			
Phthalo blue			
Prussian blue			
Raw sienna			
Raw umber			
Realgar			
Red lead			
Red ochre			
Saffron (curcuma longa)			
Smalt			
Titanium white			
Ultramarine nat			
Van Dyke brown			
Verdigris			
Vermilion			
Vine black			
Viridian			
Yellow lake reseda			
Yellow ochre			
Zinc white			